



# Cherry Garden House

Cherry Garden Street, SE16

Asking Price £425,000

Introducing a stunning and contemporary two double-bedroom apartment located in the heart of Bermondsey, SE1. This exceptional property is spread across the top two floors of a sought-after development on Cherry Garden Street, in close proximity to Bermondsey tube station and the picturesque River Thames.

The apartment boasts a bright and spacious living room, perfect for relaxation and entertaining. The modern eat-in kitchen is designed with both style and functionality in mind, offering ample space for dining. Both double bedrooms are generously sized, providing comfort and privacy, while the sleek, modern bathroom completes the home with a touch of luxury.

Ideal for those seeking a vibrant urban lifestyle, this apartment offers the perfect blend of modern living and convenience, set in one of London's most desirable locations.



# Cherry Garden House

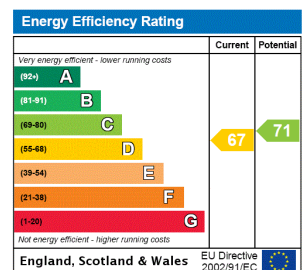
Cherry Garden Street, SE16

- Two double bedrooms
- Split level maisonette
- Modern bathroom
- Semi-open plan kitchen
- Moments from Bermondsey Station
- Immaculately presented





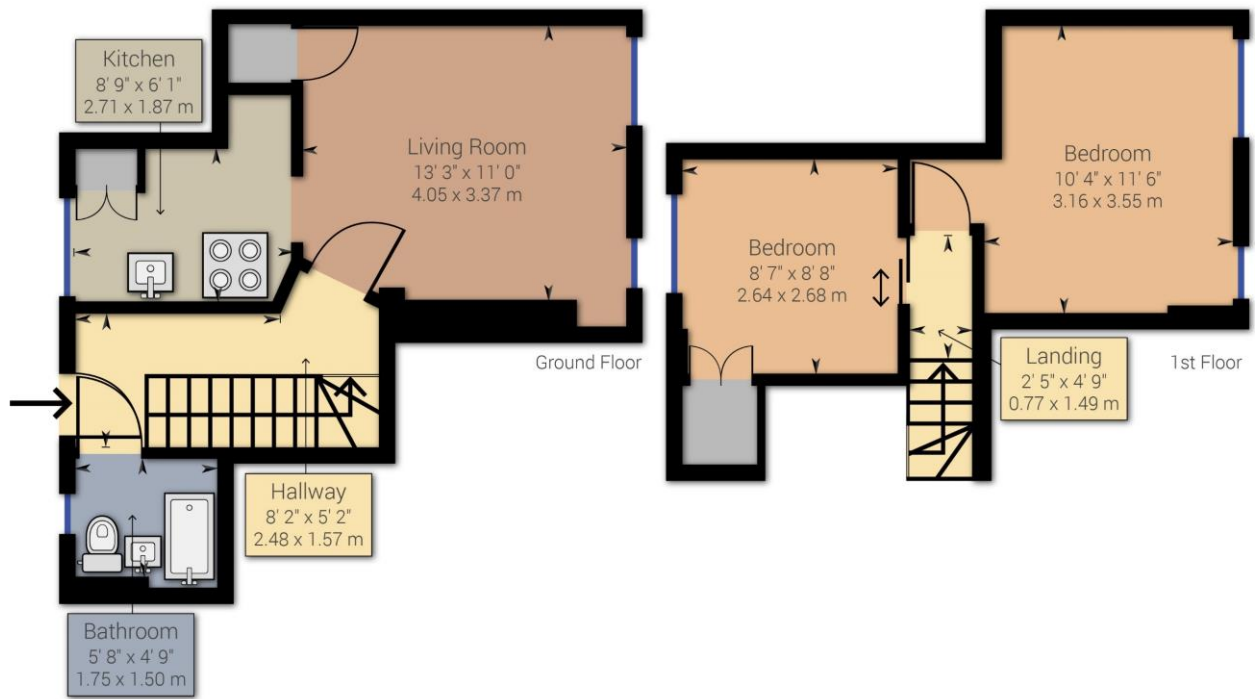
**Tenure:** Leasehold 89 years  
**Service Charge:** £1827  
**Ground Rent:** £10  
**Local Authority:** Southwark Council  
**Council Tax Band:** B



**Chestertons Surrey Quays Sales**

2 Plough Way  
 London  
 SE16 2EU

chestertons.co.uk



Approximate net internal area: 667.36 ft<sup>2</sup> / 62 m<sup>2</sup>

While every attempt has been made to ensure accuracy, all measurements are approximate, not to scale. This floor plan is for illustrative purpose only and should be used as such by any prospective tenant or purchaser.