



Aragon Tower

George Beard Road, SE8

Asking Price £395,000

Chestertons is proud to present this stunning two bedroom riverside duplex apartment in the award winning Aragon Tower, SE8, set in beautifully maintained grounds. The 8th floor property comprises of an open plan living area with a fully integrated modern kitchen, modern bathroom, separate laundry space, two functional bedrooms and excellent storage throughout. The property offers access to a 24 hour concierge service.

The views from this apartment are stunning! The property is dual aspect so boasts views that look south down the river from the open plan living space towards the picturesque location of Greenwich and north up the river towards the City and Canary Wharf from the bedrooms.

The location of this perfectly positioned property means you're only a short stroll from the Thames Clipper service, getting you to Canary Wharf pier in 4 minutes and Tower Millennium pier in 12 minutes. Additionally, Surrey Quays Overground is conveniently a short walk away too, servicing the underground at Canada Water, DLR at Shadwell, Crossrail at Whitechapel, whilst also taking you to social hotspots such as Shoreditch. Local cafes, a deli, shops and a gym are a short walk away. This is the perfect riverside home or rental property.

Viewings are a must!



Aragon Tower

George Beard Road, SE8

- Duplex apartment
- Two double bedrooms
- One bathroom
- Incredible views North and South
- 24/7 Concierge
- Riverside Development



Tenure: Leasehold 180 years

Service Charge: £4500

Ground Rent: £350

Local Authority: Lewisham

Council Tax Band: C

Chestertons Surrey Quays Lettings

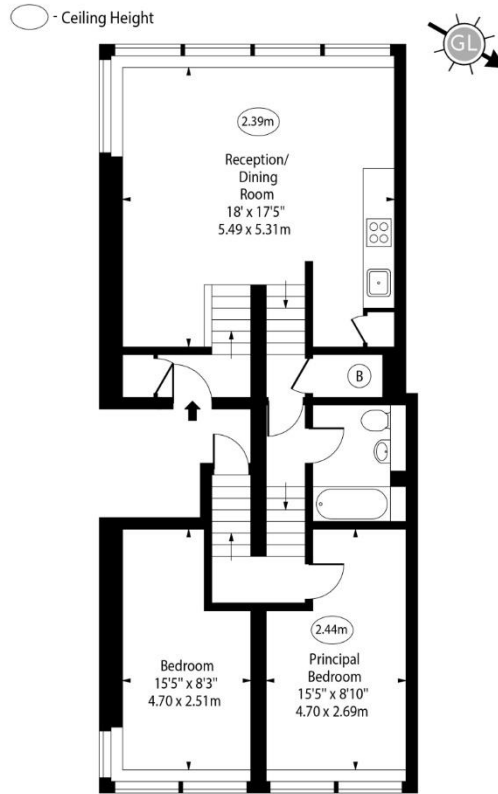
2 Plough Way

London

SE16 2EU

chestertons.co.uk

Aragon Tower,
George Beard Road, SE8



Eighth Floor

Approx Gross Internal Area 740 Sq Ft - 68.75 Sq M

For Illustration Purposes Only - Not To Scale
www.goldlens.co.uk
Ref. No. 024035E

