



Meridian House St. Davids Square

London, E14

Guide Price £275,000

*** Guide price £275,000 - £300,000***

Welcome to this stylish and contemporary 1-bedroom apartment located in the prestigious St. Davids Square development. Situated in a prime location, this apartment offers convenience, comfort, and luxury living all in one.

Upon entering, you are greeted by a spacious living area, flooded with natural light streaming in through large windows, creating an inviting and airy ambiance. The modern design seamlessly combines comfort and functionality, with sleek wooden flooring and neutral tones throughout, providing a versatile canvas for personalization.

The separate kitchen boasts high-quality fixtures and fittings, including integrated appliances and ample storage space, making it a delight for any aspiring chef or culinary enthusiast. Whether you're preparing a quick breakfast or hosting a dinner party, this kitchen provides the perfect backdrop for your culinary creations.

The bedroom offers a serene retreat, featuring fitted storage space to keep your belongings organized and out of sight. With plush carpeting underfoot and soothing décor, this space invites relaxation and restful nights.

The apartment also benefits from a contemporary bathroom, complete with modern fixtures, a bathtub, and a shower, providing a luxurious haven for relaxation and rejuvenation after a long day.

Residents of St. Davids Square are treated to an array of amenities, including a 24-hour concierge service for added convenience and peace of mind. Additionally, the development boasts impressive leisure facilities, including a swimming pool and gym, perfect for maintaining an active lifestyle without ever having to leave home.

CHESTERTONS



Meridian House St. Davids Square

London, E14

- 1 Bedroom
- Allocated Parking
- 24-hour Concierge
- Residents only gym
- Swimming pool
- Short walk to Island Gardens DLR station
- Close to Thames Footpath through to Cutty Sark and Greenwich



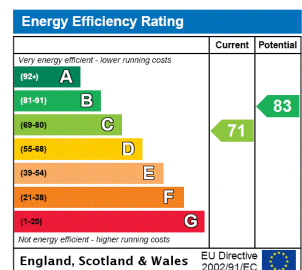
Tenure: Leasehold 972 years 10 months

Service Charge: £4654

Ground Rent: £150

Local Authority: Tower Hamlets

Council Tax Band: E



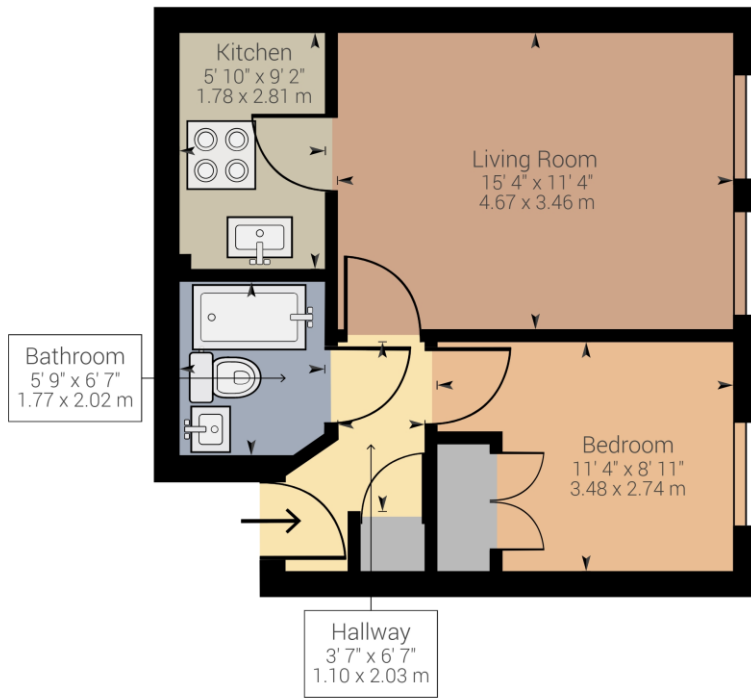
Chestertons Surrey Quays Sales

2 Plough Way

London

SE16 2EU

chestertons.co.uk



Approximate net internal area: 423.14 ft² / 39.31 m²

While every attempt has been made to ensure accuracy, all measurements are approximate, not to scale. This floor plan is for illustrative purpose only and should be used as such by any prospective tenant or purchaser.

