



Turner House

Cassilis Road, E14

Guide Price £525,000

Guide Price ***£525,000 - £540,000***

Welcome to this beautifully designed 2-bedroom flat located in the prestigious Canary Central development. This modern property features two spacious double bedrooms, perfect for comfortable living. The open-plan kitchen and living area are finished to a high standard, providing a stylish and functional space for both relaxation and entertainment. The living area extends seamlessly onto a private balcony, offering a serene outdoor space to unwind and enjoy the views.

Residents of this development benefit from a range of exceptional amenities. The communal garden provides a peaceful retreat, while the on-site gym and swimming pool cater to your fitness and leisure needs. Additionally, the dedicated 24-hour concierge service ensures convenience and security round the clock.

Conveniently situated, this flat is just 0.9 miles from Canary Wharf Underground Station and a mere 0.4 miles from South Quay DLR Station, offering excellent transport links and easy access to the heart of London.

Experience the perfect blend of luxury and convenience in this remarkable Canary Central flat.

CHESTERTONS



Turner House

Cassilis Road, E14

- 2 Bedrooms
- 2 Bathrooms
- Gym facilities
- Swimming Pool
- 24 Hour concierge
- Balcony



Tenure: Leasehold 976 years 11 months

Service Charge: £5150

Ground Rent: £325

Local Authority: Tower Hamlets

Council Tax Band: F

Chestertons Surrey Quays Sales

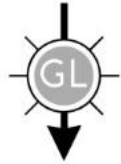
2 Plough Way

London

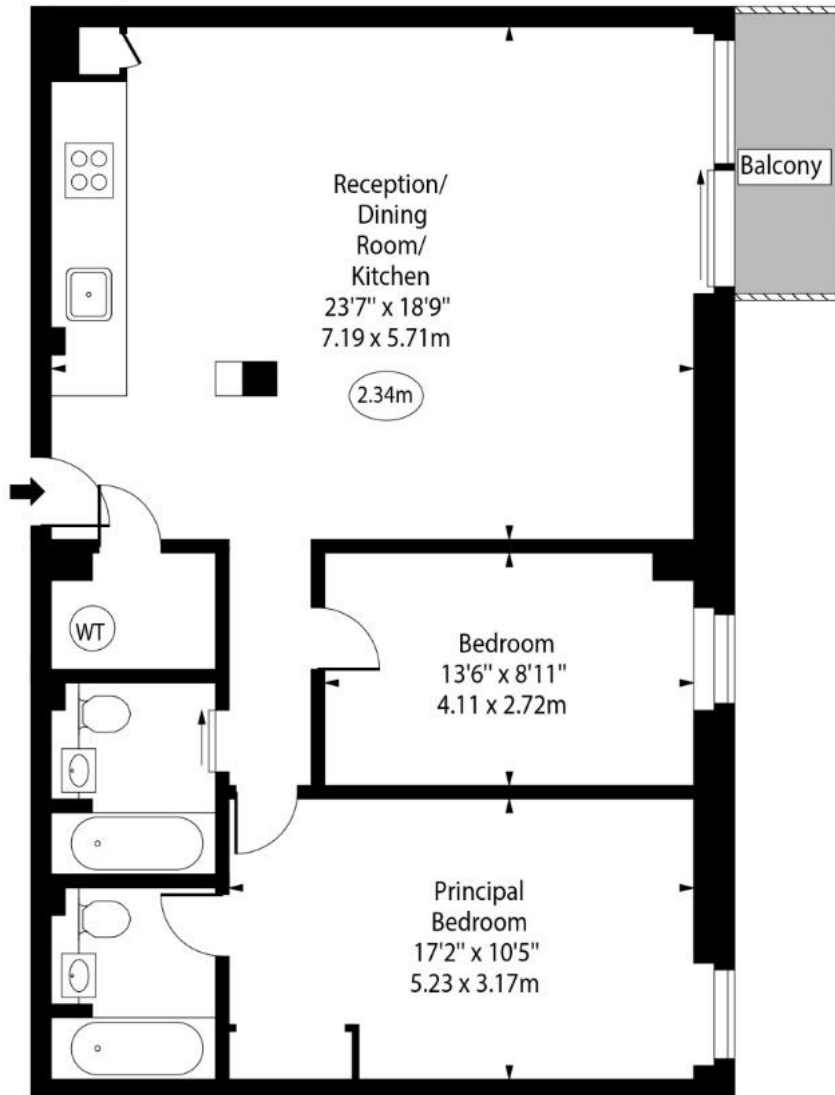
SE16 2EU

chestertons.co.uk

Turner House,
Cassilis Road, E14



○ - Ceiling Height



First Floor

Approx Gross Internal Area 915 Sq Ft - 85.00 Sq M

For Illustration Purposes Only - Not To Scale
www.goldlens.co.uk
Ref. No. 024090K

