

THE HENLY

HOMES 103, 190, 191, 194 & 197

BEAUMONT MANOR

HEMEL HEMPSTEAD



4 BEDROOM HOUSE

The Henly is a striking four bedroom family home designed over three levels. Amongst the highlights of this house is its modern ground floor layout, encompassing a kitchen, dining and living room with feature skylights. The first floor is home to the master bedroom with en suite, offering a private haven for you to enjoy.



COUNTRYSIDE
Homes

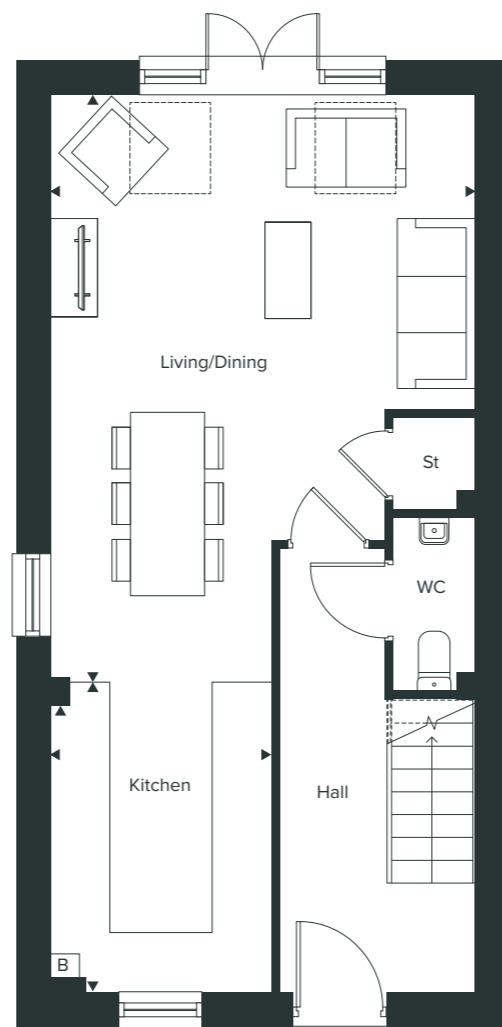




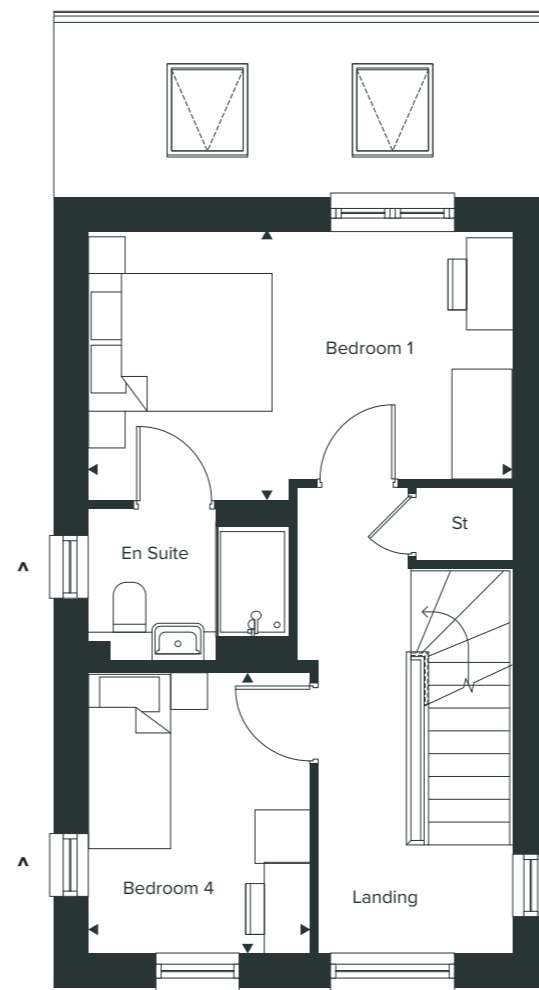
THE HENLY

4 BEDROOM HOUSE (FREEHOLD)

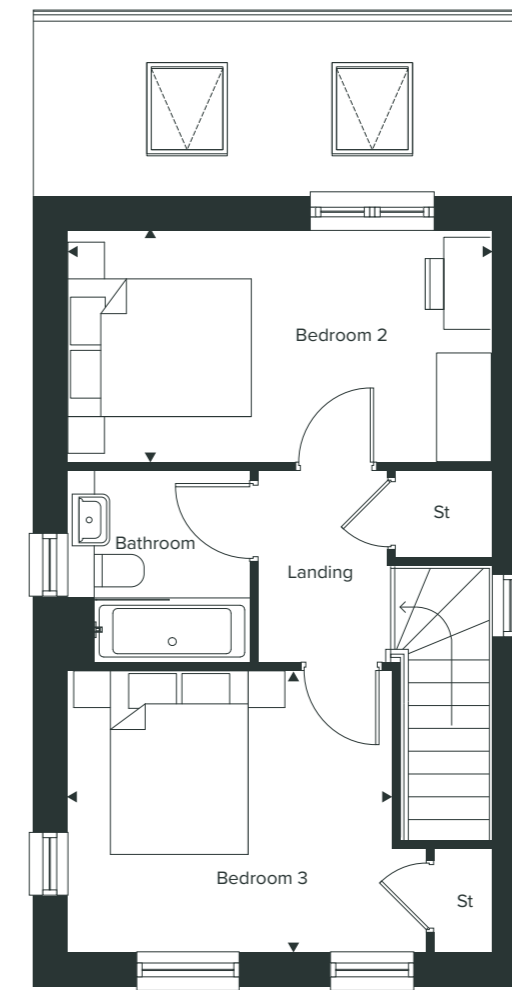
HOMES 103, 190*, 191*, 194* & 197*



GROUND floor



FIRST floor



SECOND floor

BEAUMONT MANOR

HEMEL HEMPSTEAD

GROUND FLOOR

Living/Dining
6.35m x 4.65m | 20'10" x 15'3"

Kitchen
3.47m x 2.42m | 11'5" x 7'11"

FIRST FLOOR

Bedroom 1
4.65m x 2.91m | 15'3" x 9'7"

Bedroom 4
3.09m x 2.43m | 10'2" x 8'0"

SECOND FLOOR

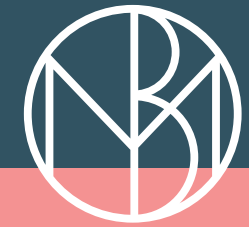
Bedroom 2
4.65m x 2.55m | 15'3" x 8'4"

Bedroom 3
3.56m x 3.08m | 11'8" x 10'1"

TOTAL INTERNAL AREA

120.0 SQ M | 1,292 SQ FT

Key:
B – Boiler WC – Cloakroom W/ – Sky light
St – Store * – Homes are handed
^ – Windows to selected homes



WWW.BEAUMONT-MANOR.CO.UK

The illustrations shown are computer generated impressions of how the property may look and are indicative only. External details or finishes may vary on individual plots and homes may be built in either detached or attached styles depending on the development layout. Exact specifications, window styles and whether a property is left or right handed may differ from plot to plot. Please speak to our sales consultant for specific plot details. The floorplan has been produced for illustrative purposes only. Room sizes shown are between arrow points as indicated on plan. The dimensions have tolerances of + or -50mm and should not be used other than for general guidance. If specific dimensions are required, enquiries should be made to the sales consultant. The floor plans shown are not to scale. Measurements are based on the original drawings. Slight variations may occur during construction. 11/23.



COUNTRYSIDE
Homes