

THE BROMLEY

HOMES 36, 176 & 179



BEAUMONT MANOR

HEMEL HEMPSTEAD

3 BEDROOM HOUSE

A charming three bedroom home with large feature windows, ensuring a bright and airy living environment. Upstairs, the master bedroom is of a generous size and benefits from en suite facilities, offering a relaxing haven for you to enjoy.



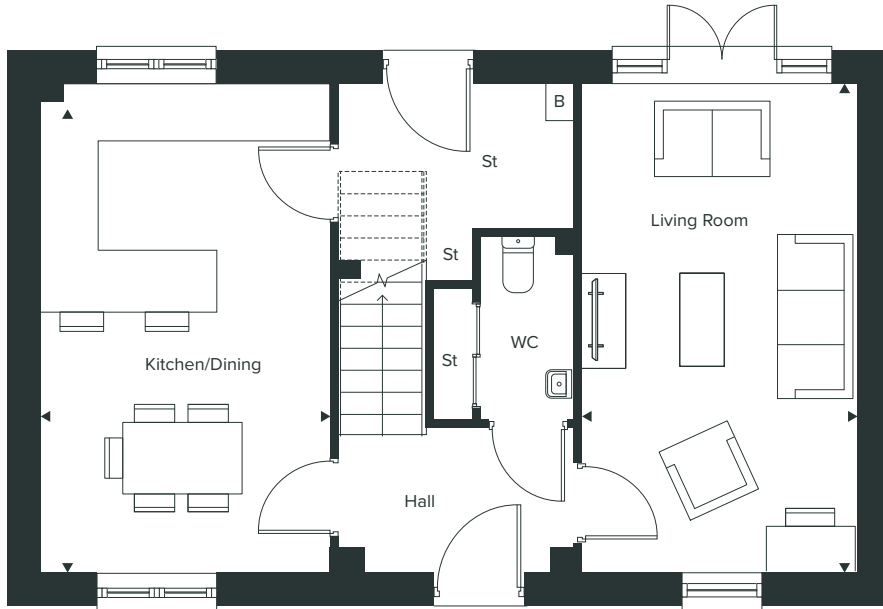
COUNTRYSIDE
Homes

The illustrations shown are computer generated impressions of how the property may look and are indicative only. External details or finishes may vary on individual plots and homes may be built in either detached or attached styles depending on the development layout. Exact specifications, window styles and whether a property is left or righthanded may differ from plot to plot. Please speak to our Sales Consultant for specific plot details.

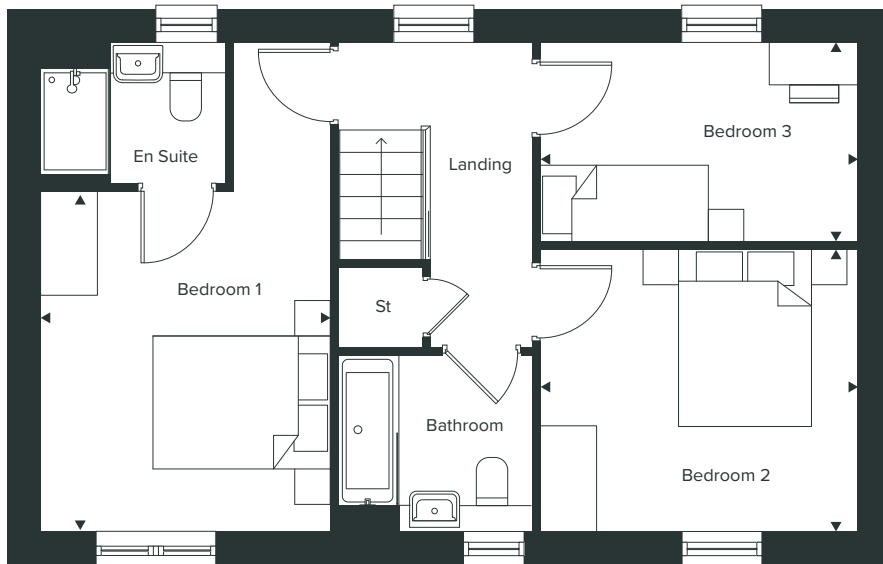
THE BROMLEY

3 BEDROOM HOUSE (FREEHOLD)

HOMES 36, 176 & 179*



GROUND floor



FIRST floor

The floorplan has been produced for illustrative purposes only. Room sizes shown are between arrow points as indicated on plan. The dimensions have tolerances of + or -50mm and should not be used other than for general guidance. If specific dimensions are required, enquiries should be made to the Sales Consultant. The floorplans shown are not to scale. Measurements are based on the original drawings. Slight variations may occur during construction. 01/24.

BEAUMONT MANOR

HEMEL HEMPSTEAD

GROUND FLOOR

Kitchen/Dining
5.55m x 3.25m | 18'2" x 10'8"

Living Room
5.55m x 3.10m | 18'2" x 10'2"

FIRST FLOOR

Bedroom 1
5.55m x 3.28m | 18'2" x 10'9"

Bedroom 2
3.60m x 3.16m | 12'3" x 10'8"

Bedroom 3
3.60m x 2.30m | 12'3" x 7'7"

TOTAL INTERNAL AREA

102.6 SQ M | 1,104 SQ FT

Key:

B – Boiler
St – Store

WC – Cloakroom
* – Home is handed

Window positions and sizes shown on computer generated images and floorplans will differ on a plot by plot basis, please speak to a Sales Consultant for plot specific details.