



HARMONY HOMES
ESTATE AGENCY



81 Findhorn Street, Dundee, DD4 9PH

Offers over £135,000





Offers over £135,000

81 Findhorn Street

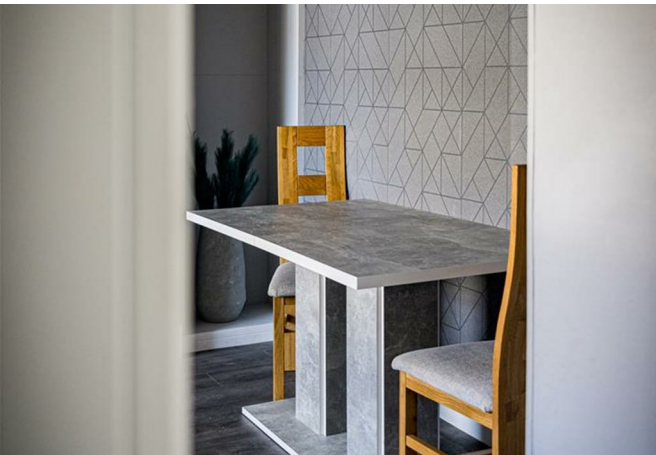
Dundee, DD4 9PH

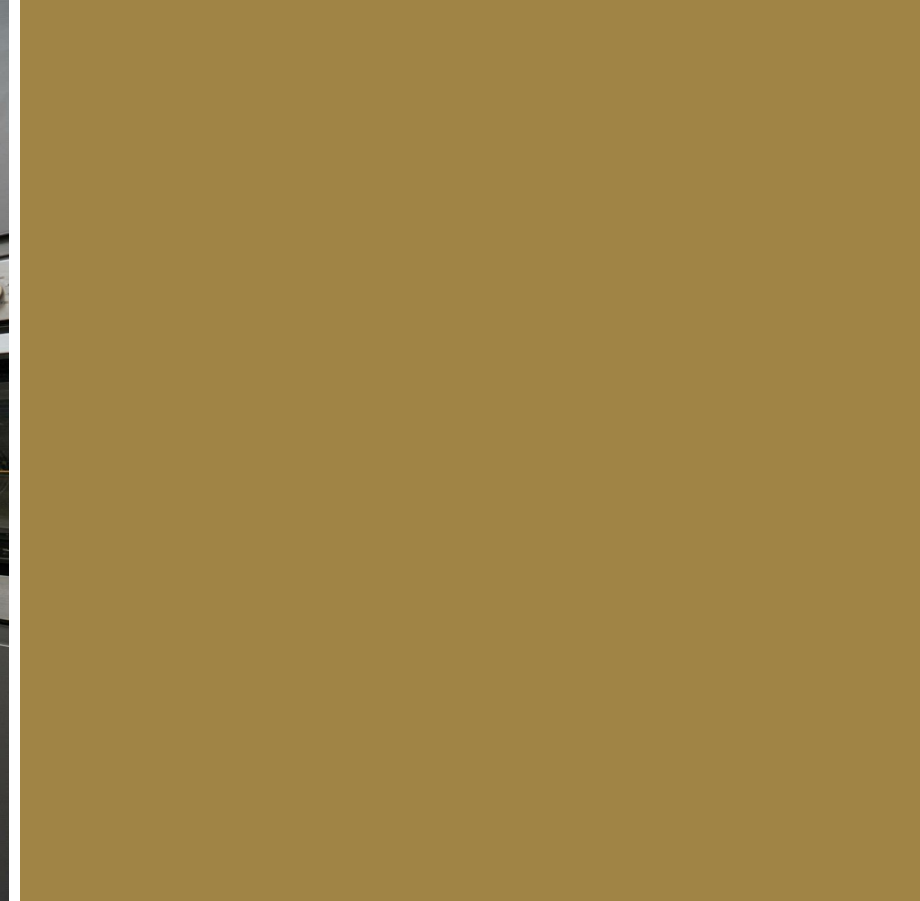
Nestled on the charming Findhorn Street in Dundee, this delightful house offers a perfect blend of comfort and style. Boasting one reception room, three bedrooms, and a well-appointed bathroom, this property is ideal for those seeking a cozy yet spacious home.

Built in 1954, this house exudes character and charm while also offering modern conveniences. With 1,001 sq ft of living space, there is ample room for relaxation and entertainment. The property has been meticulously maintained and is in move-in condition, making it a turnkey option for those looking to settle in effortlessly.

Recent upgrades including newly fitted windows, doors, kitchen, and bathroom add a touch of contemporary elegance to this classic home. The south-facing garden is a tranquil retreat, perfect for enjoying sunny afternoons or hosting outdoor gatherings.

Convenience is key with parking space available for two vehicles, ensuring that you never have to worry about finding a spot. Whether you're looking for a peaceful sanctuary to call home or a welcoming space to entertain friends and family, this property on Findhorn Street is sure to captivate your heart.



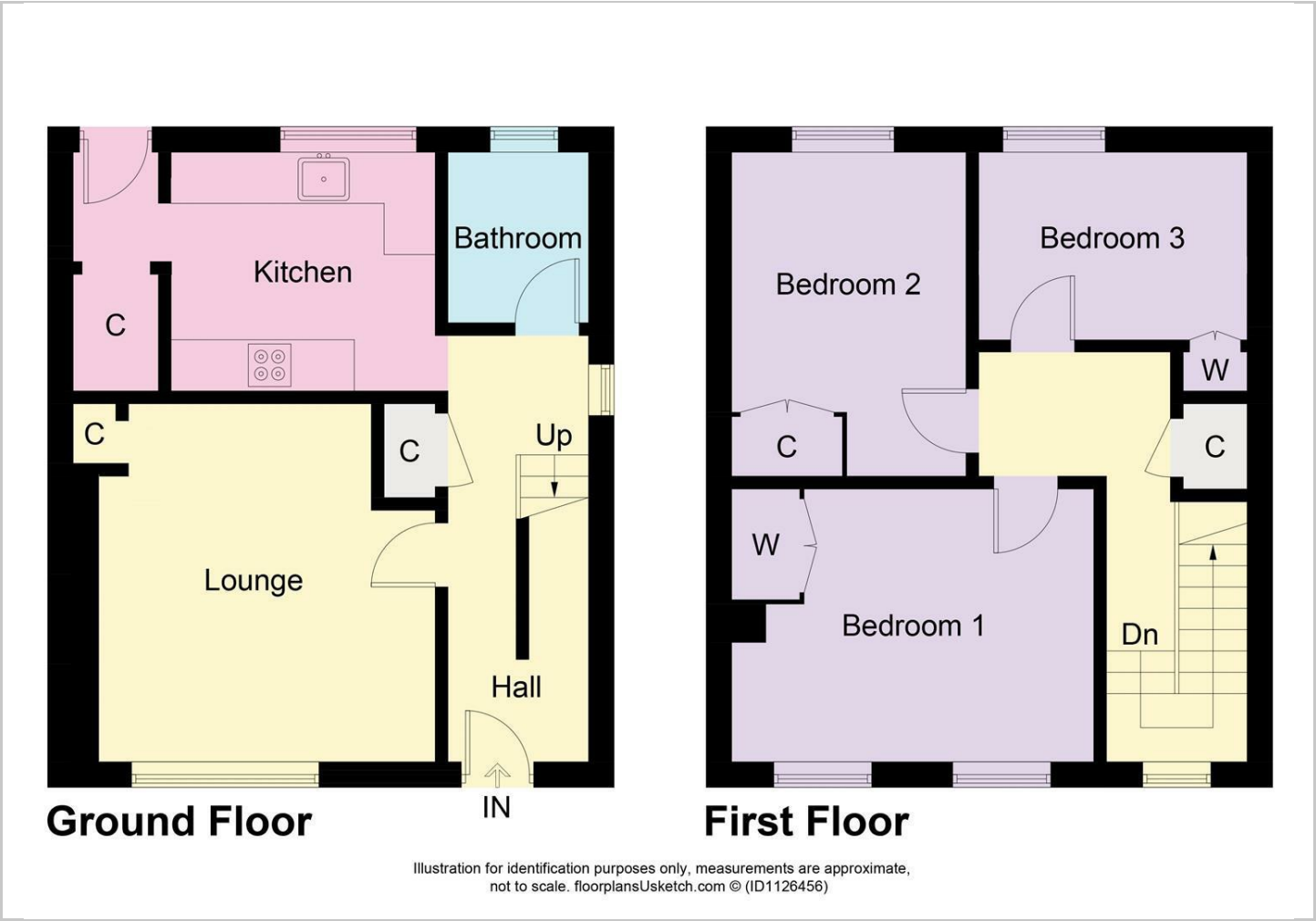


Directions





Floor Plans

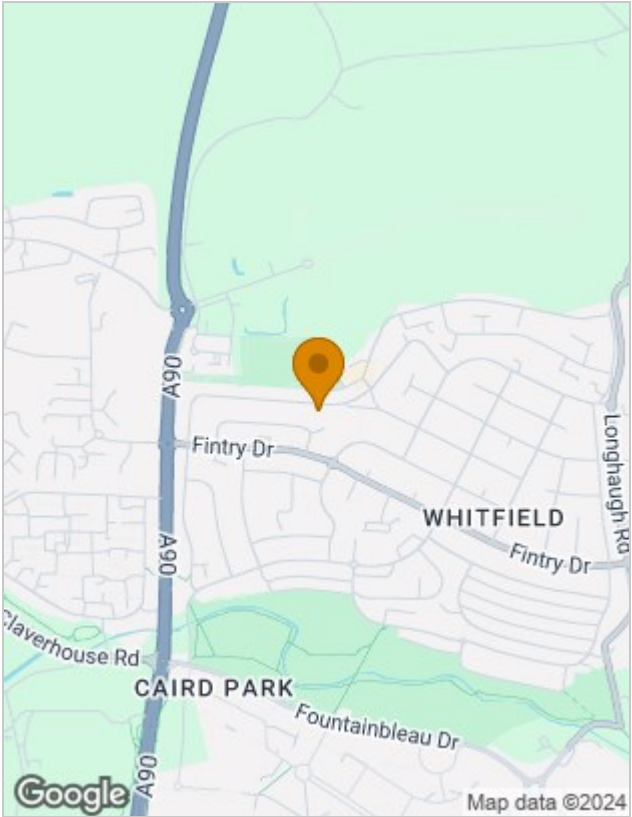


Viewing

Please contact our Harmony Homes Office on 01382 819155 if you wish to arrange a viewing appointment for this property or require further information.

The particulars are set out as a general outline only for the guidance of intended purchasers or lessees, and do not constitute, any part of a contract. Nothing in these particulars shall be deemed to be a statement that the property is in good structural condition or otherwise nor that any of the services, appliances, equipment or facilities are in good working order. Purchasers should satisfy themselves of this prior to purchasing.

Location Map



Energy Performance Graph

