

BRUNTON

RESIDENTIAL



ST. BARTHOLOMEWS CLOSE, CRESSWELL, NE61

Offers Over £490,000

BRUNTON

RESIDENTIAL





BRUNTON

RESIDENTIAL



BRUNTON

RESIDENTIAL



Well Presented & Extended Semi-Detached Family Home, Boasting an Exceptional Position with Outstanding Open Aspect Views over the Breathtaking Northumberland coastline with Great Open Plan Kitchen/Dining & Family Space, Generous Lounge plus Separate Snug, Utility Room, Three Double Bedrooms plus Study, Re-Fitted Family Bathroom plus Ground Floor Shower Room, Off Street Parking, Garage/Store & Delightful Landscaped Rear Gardens!

This excellent, three-bedroom semi-detached home is ideally located on the highly desirable St. Bartholomews Close, Cresswell. St. Bartholomews Close is perfectly positioned just a short walk from both Cresswell Beach and the superb Druridge Bay. Also placed nearby is the historic Cresswell Pele Tower and Walled Garden, The Drift Cafe and Cresswell Ices.

The property itself features three generously sized bedrooms, with the principal suite benefiting from a connecting door to a home study or nursery. Further highlights include a utility room, a garage, and landscaped rear gardens.

Cresswell is located just 15 minutes drive from the historic market town of Morpeth, which provides an excellent array of shops, cafes, restaurants and schooling. The popular coastal towns of Amble and Warkworth are also found only 15 minutes to the north.

BRUNTON

RESIDENTIAL



BRUNTON

RESIDENTIAL

Internally, the property is accessed via an entrance lobby with access to a ground floor shower room. The entrance hall leads into a central hallway, with a return staircase to the first floor. To the left is a cosy lounge with a wood-burning stove, with access into a snug with window over looking the front garden. The lounge then offers double doors which open into the extended dining room, which enjoys superb views over the rear gardens and towards Druridge Bay.

The dining room then flows into a modern, re-fitted kitchen fitted with stylish modern units and integrated appliances. From the kitchen, there is access to a spacious utility room, which leads to the rear and into a large garage/store currently used as a home gym. A further door provides access into the garage with secure storage and garage door.

The stairs then lead to the first floor which in turn gives access into three double bedrooms. The generous principal bedroom enjoys a southerly outlook and links to a home office or nursery, with stunning views north over Druridge Bay—this space could easily be converted into an en suite should it be required. Bedroom two also enjoys coastal views to the rear. Bedroom three offers more southerly views, again with wonderful coastal aspect. The well-presented and re-fitted family bathroom, which is fully tiled, is also accessed from the first floor landing and provides a four piece suite with free standing bathtub.

Externally, the property includes a large front garden, which is laid to lawn, and a block-paved driveway providing off street parking for 3-4 vehicles, leading to the garage/store. The rear garden has been beautifully landscaped by the current owners, with mature planted borders, magnolia and cherry trees, and again offers breathtaking coastal views.

Well presented throughout, this superb semi-detached home offers an excellent opportunity to secure only a handful of residential homes that provide such a rare and desirable position and viewings are deemed essential.



BRUNTON

RESIDENTIAL

TENURE : Freehold

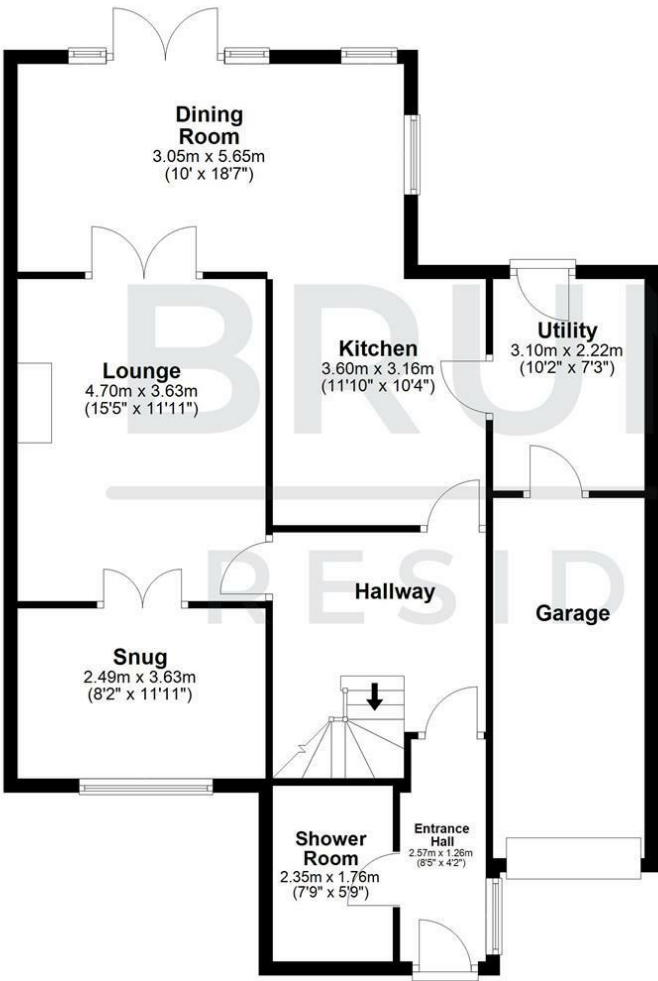
LOCAL AUTHORITY : Northumberland CC

COUNCIL TAX BAND : D

EPC RATING : D

Ground Floor

Approx. 95.7 sq. metres (1030.5 sq. feet)



D

First Floor

Approx. 59.1 sq. metres (636.0 sq. feet)

