

BRUNTON

RESIDENTIAL



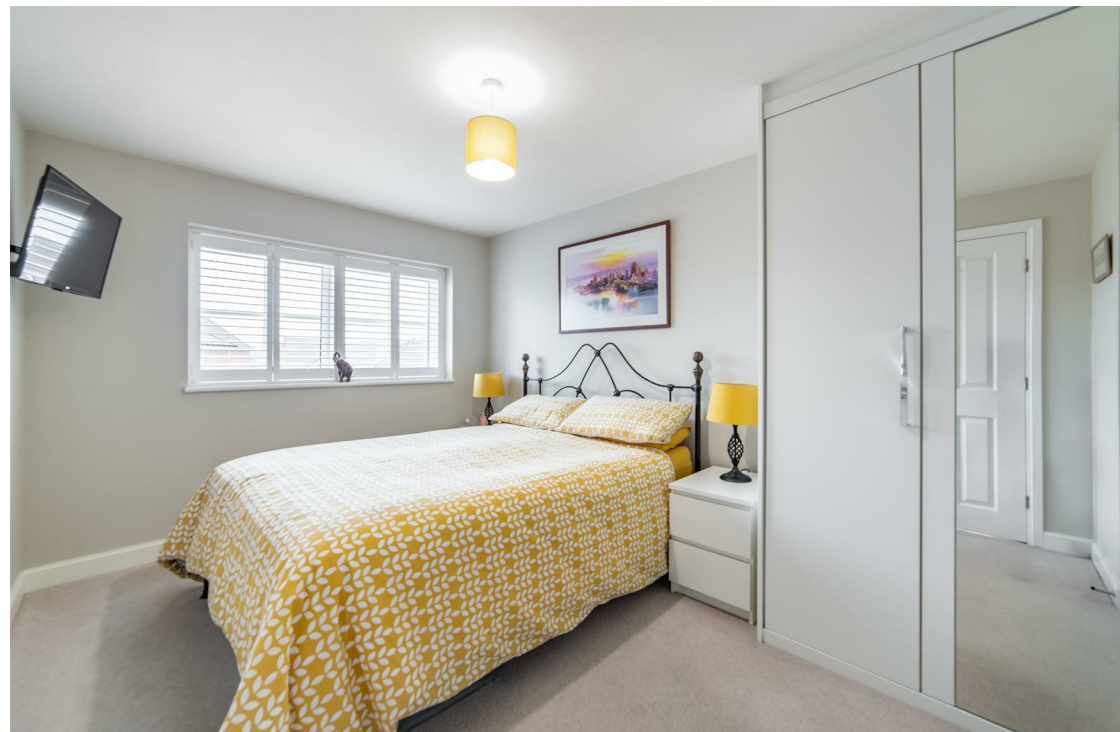
SLEEKBURN, SOUTH FIELDS, MORPETH, NE61

£299,950

BRUNTON

RESIDENTIAL





BRUNTON

RESIDENTIAL



BRUNTON

RESIDENTIAL



THREE BEDROOMS – DETACHED HOUSE – POPULAR LOCATION

Brunton Residential are delighted to offer for sale this well-presented three-bedroom detached home located on Sleekburn within South Fields in Morpeth.

The property features three well-proportioned bedrooms, with the principal benefiting from fitted wardrobes and an en suite shower room. There is an open-plan lounge, kitchen, and dining area. Additionally, the home offers a good-sized garden and an attached garage providing off-street parking.

Morpeth is a thriving market town offering a wide range of amenities, including well-regarded schools, independent shops, cafés, and excellent transport links.

BRUNTON

RESIDENTIAL



BRUNTON

RESIDENTIAL

Upon entering, you're welcomed into an entrance hall with stairs leading to the first floor landing. On the right, there is an open-plan kitchen, lounge, and dining area featuring a front aspect window and French doors opening to the rear garden. An under stair storage cupboard is also located in this space. The kitchen is well equipped with floor and wall units, wood effect work surfaces, integrated appliances including a double oven, induction hob, and extractor fan, a window overlooking the rear garden, and access to a ground floor WC.

Upstairs, the landing gives access to three well-proportioned bedrooms, with the principal bedroom benefiting from fitted wardrobes and an en-suite shower room. Another bedroom also features fitted wardrobes. A family bathroom serves the remaining rooms and is fitted with a bath with overhead shower, washbasin, and WC.

Externally, to the front, the property offers a driveway leading to an integral garage for off-street parking. To the rear is a good-sized enclosed garden, mainly laid to lawn with well-stocked borders and a paved seating area.



BRUNTON

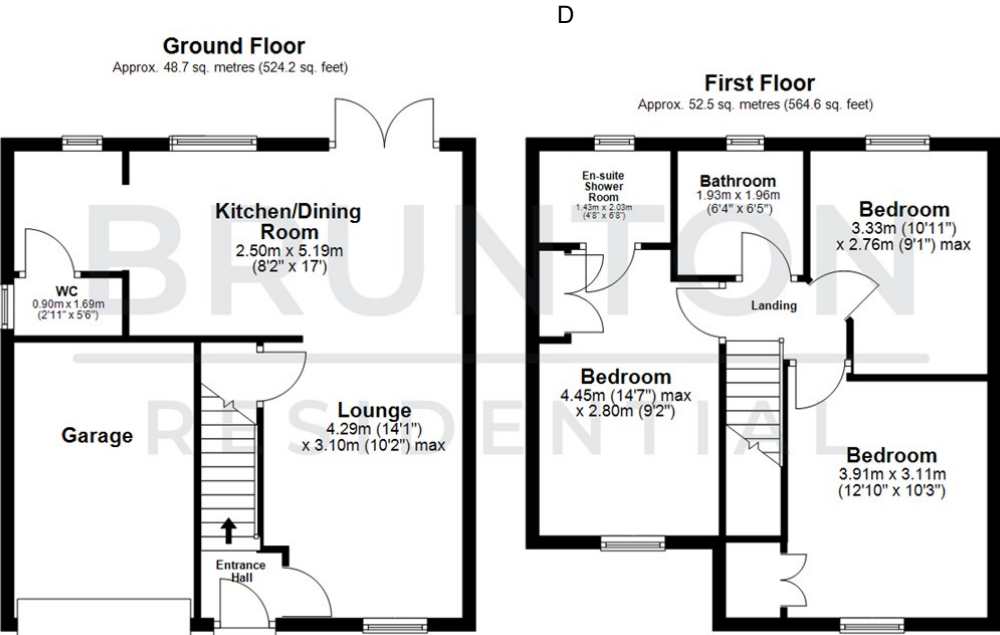
RESIDENTIAL

TENURE : Freehold

LOCAL AUTHORITY : Northumberland
County Council

COUNCIL TAX BAND : D

EPC RATING : B



All measurements are approximate and are for illustration only.
Plan produced using PlanUp.

