

BRUNTON

RESIDENTIAL



HOLLY WAY, ELLINGTON, NE61

£375,000

BRUNTON

RESIDENTIAL





BRUNTON

RESIDENTIAL



BRUNTON

RESIDENTIAL



FOUR BEDROOMS – DETACHED FAMILY HOME – SOUGHT-AFTER LOCATION - LUXURY CONDITION

Brunton Residential are delighted to offer for sale this well-presented four-bedroom detached home, located on Holly Way in the popular village of Ellington, Morpeth.

This property features four well-proportioned bedrooms, with the principal bedroom benefiting from an en suite shower room and a walk-in wardrobe. The remaining bedrooms all include sliding door fitted wardrobes. The property also offers a modern open-plan kitchen/diner, a utility room, a lovely enclosed rear garden, and a garage providing off-street parking.

Ellington is a peaceful village located within easy reach of Morpeth and the Northumberland coastline. The area offers local amenities, green spaces, and excellent transport links to surrounding towns.

BRUNTON

RESIDENTIAL



BRUNTON

RESIDENTIAL

Upon entering the property, you are welcomed into a spacious hallway laid with Amtico flooring, featuring stairs to the first floor and an under-stair storage cupboard. To the left, there is a generously sized lounge with a large front-aspect window providing plenty of natural light. The hallway provides internal access to the integral garage and leads through to an impressive open-plan kitchen, dining and living area at the rear of the property. This space benefits from a feature fireplace and bifold doors opening out to the rear garden.

The kitchen is modern and well-equipped, offering a range of floor and wall units, integrated appliances including an oven, fridge, dishwasher and hob with extractor fan. There is a breakfast bar, and a window overlooking the garden. From here, there is access to the utility room, which provides further storage, space for additional appliances, a door to a WC, and a second external door leading to the side of the property.

Upstairs, the first-floor landing provides access to four well-proportioned bedrooms. The principal bedroom benefits from a walk-in wardrobe and a stylish en suite shower room. The remaining bedrooms each include sliding-door wardrobes, offering ample storage. A fully tiled family bathroom serves the additional rooms and features a bath, walk-in shower, washbasin and WC. There is also a convenient storage unit on the landing.

Externally, the front of the property includes a driveway leading to the garage, offering off-street parking. To the rear, there is a fully enclosed garden with well-stocked borders, a lawned area, and a paved patio area.



BRUNTON

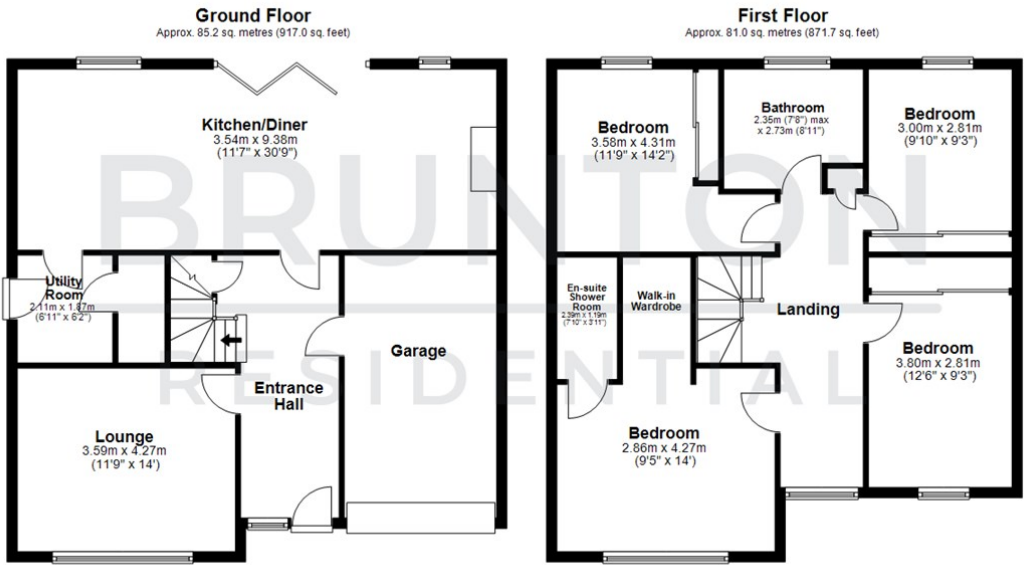
RESIDENTIAL

TENURE : Freehold

LOCAL AUTHORITY : Northumberland
County Council

COUNCIL TAX BAND : E

EPC RATING : B



All measurements are approximate and are for illustration only.
Plan produced using PlanUp.

