

BRUNTON

RESIDENTIAL



OLYMPIA HILL, MORPETH, NE61

Offers Over £290,000

BRUNTON

RESIDENTIAL





BRUNTON

RESIDENTIAL



BRUNTON

RESIDENTIAL



THREE BEDROOM - MODERN- GREAT LOCATION

Welcome to Olympia Hill, Morpeth - a charming location for this delightful townhouse property. This lovely home boasts a spacious reception room, perfect for entertaining guests or relaxing with your family. With three cosy bedrooms, there's plenty of space for everyone to enjoy. The property also features a well-appointed bathroom, ensuring convenience for all residents.

BRUNTON

RESIDENTIAL



BRUNTON

RESIDENTIAL

Internally, this exquisite townhouse features a generously proportioned reception room, ideal for entertaining guests or enjoying quality time with family. The space is beautifully illuminated by natural light, creating a warm and inviting atmosphere. Accommodating three well-appointed bedrooms, this home provides ample personal space for all residents, complemented by a thoughtfully designed bathroom that ensures convenience and comfort.

Externally, the property showcases elegant traditional architecture that seamlessly integrates with the picturesque surroundings, exuding a sense of charm and character. The meticulously maintained garden area offers a serene retreat, perfect for relaxation or social gatherings.



BRUNTON

RESIDENTIAL

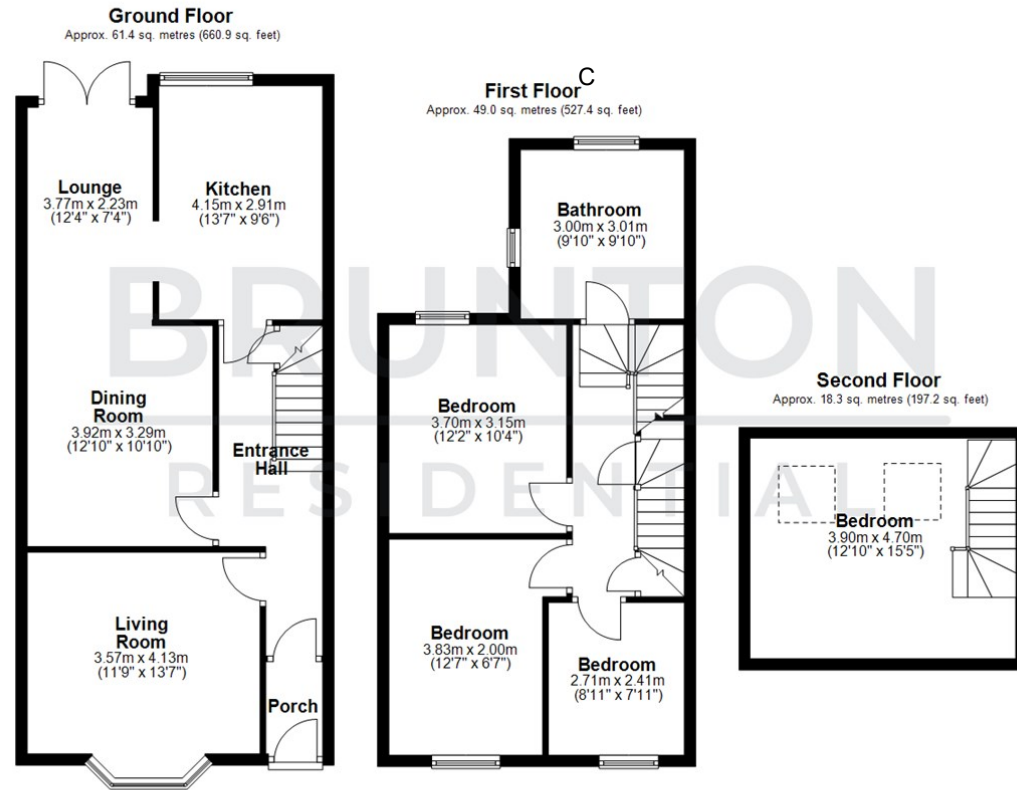
TENURE : Freehold

LOCAL AUTHORITY :

COUNCIL TAX BAND : C

EPC RATING : D

SERVICES :



Total area: approx. 128.7 sq. metres (1385.5 sq. feet)

All measurements are approximate and are for illustration only.
Plan produced using PlanUp.



Energy Efficiency Rating	
Current	Potential
Very energy efficient - lower running costs	
(92 plus) A	
(81-91) B	
(69-80) C	
(55-68) D	
(39-54) E	
(21-38) F	
(1-20) G	
Not energy efficient - higher running costs	
	74
	58
EU Directive 2002/91/EC	
England & Wales	

Environmental Impact (CO ₂) Rating	
Current	Potential
Very environmentally friendly - lower CO ₂ emissions	
(92 plus) A	
(81-91) B	
(69-80) C	
(55-68) D	
(39-54) E	
(21-38) F	
(1-20) G	
Not environmentally friendly - higher CO ₂ emissions	
EU Directive 2002/91/EC	
England & Wales	