

BRUNTON

RESIDENTIAL



NORHAM DRIVE, MORPETH, NE61

£300,000

BRUNTON

RESIDENTIAL





BRUNTON

RESIDENTIAL





THREE BEDROOM - DETACHED HOME - SOUGHT AFTER LOCATION

Brunton Residential are delighted to offer for sale this fantastic three bedroom family home located on Norham Drive, in the popular Stophill Manor estate in Morpeth. Ideally located for access to outstanding schooling and within walking distance of the train station and Morpeth town centre also with excellent links to the A1.

BRUNTON

RESIDENTIAL



BRUNTON

RESIDENTIAL

Internally, you're welcomed by a hallway that leads directly to a spacious living room. This room feels inviting, with a cosy fireplace as the focal point and large windows that fill the space with natural light. Moving further in, you come to the dining space which in turn leads to the kitchen area, which is modern and practical, offering plenty of counter space and storage.

To the rear of the dining room is a bright conservatory, surrounded by windows that overlook the neat and well-maintained gardens. an ideal spot for relaxing or enjoying your morning coffee. Back inside, the ground floor also features a convenient utility room which in turn leads to the WC.

Upstairs, the landing connects three well-sized bedrooms, all with natural light and a comfortable atmosphere. The main bedroom includes an en-suite shower room, while the other two bedrooms share a modern, well-appointed second bathroom. The overall design of the house provides a good balance of open, communal spaces and private rooms, making it both functional and welcoming for a family.

Externally, the property offers a lovely, low-maintenance front garden with planted areas, a large driveway for multiple vehicles and garage access. The property also offers a beautifully laid out rear garden with lawned and paved areas with fenced boundaries.



BRUNTON

RESIDENTIAL

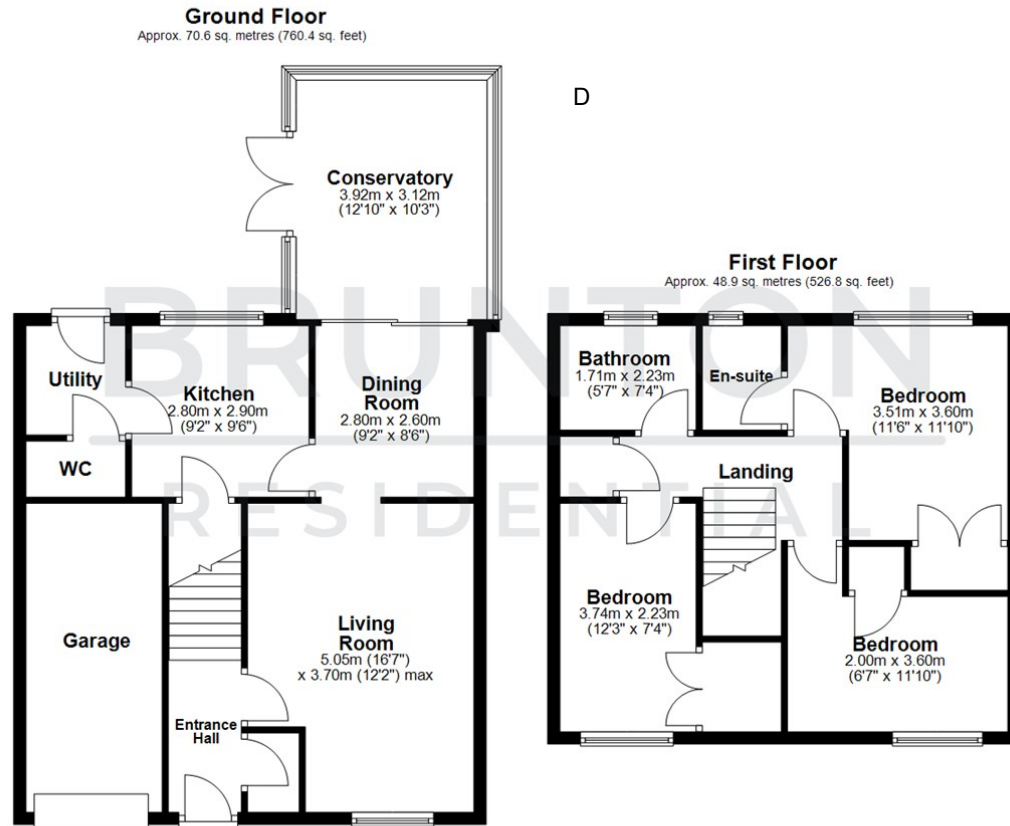
TENURE : Freehold

LOCAL AUTHORITY :

COUNCIL TAX BAND : D

EPC RATING : D

SERVICES :



D

All measurements are approximate and are for illustration only.
Plan produced using PlanUp.

