

Brigg Farm Court, Camblesforth, YO8 8JR

Offers Over £325,000

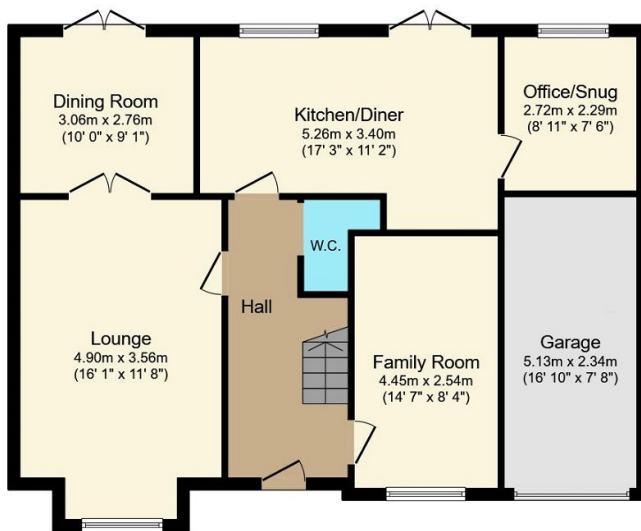
4 2 3



***** BEAUTIFULLY PRESENTED FOUR BEDROOM DETACHED FAMILY HOME *** THREE RECEPTION ROOMS *** KITCHEN/DINER *** SNUG/OFFICE *** FAMILY BATHROOM MASTER WITH EN-SUITE *** GOOD SIZE PLOT *** LARGE ENCLOSED PRIVATE GARDEN TO REAR *** PRIVATE DRIVEWAY WITH OFF STREET PARKING & GARAGE *****

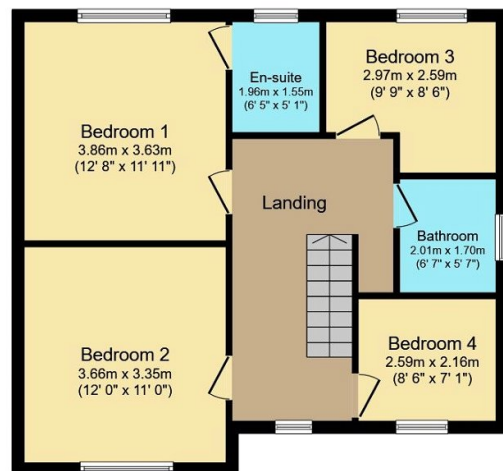
Key Features

- Spacious Detached Family Home
- Master with en-suite
- Three Reception Rooms
- Good Size Rear Garden
- Popular Village Location
- Four Bedrooms
- Modern Kitchen/Diner
- Snug/Office
- Garage & Off Street Parking
- Early Viewing Recommended



Ground Floor

Floor area 86.6 m² (933 sq.ft.)



First Floor

Floor area 61.0 m² (657 sq.ft.)

TOTAL: 147.7 m² (1,590 sq.ft.)

This floor plan is for illustrative purposes only. It is not drawn to scale. Any measurements, floor areas (including any total floor area), openings and orientations are approximate. No details are guaranteed, they cannot be relied upon for any purpose and do not form any part of any agreement. No liability is taken for any error, omission or misstatement. A party must rely upon its own inspection(s). Powered by www.Propertybox.io