

ANWYL
thoughtful homes

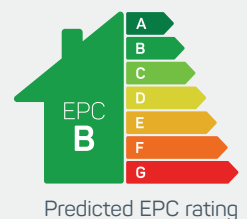


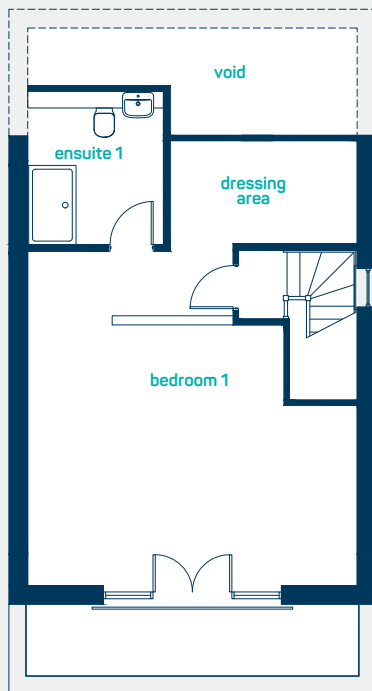
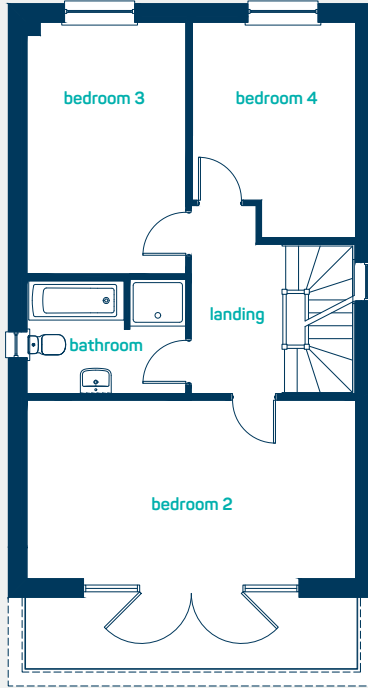
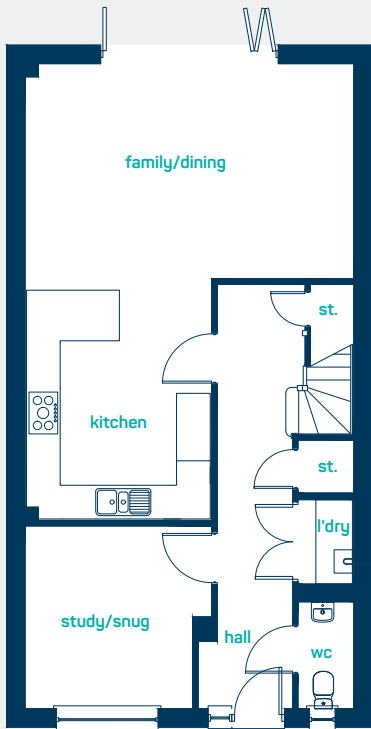
the orme

4 bed detached

A stunning 4 bedroom detached family home. Key features include kitchen dining and family room with *bi-fold doors* leading into the rear garden, French doors leading onto a spacious balcony to the front and a premier suite to the top floor with *dressing room* and *juliet balcony*.

www.anwylhomes.co.uk





providing space for
the whole family

ground floor

family/dining 19'1" x 12'5"
kitchen 14'1" x 10'9"
study/snug 10'9" x 10'6"

family/dining 5.81m x 3.78m
kitchen 4.3m x 3.27m
study/snug 3.27m x 3.2m

first floor

bedroom 2 19' x 10'4"
bedroom 3 14'7" x 9'2"
bedroom 4 12'6" x 9'5"
bathroom 9'2" x 6'7"

bedroom 2 5.8m x 3.15m
bedroom 3 4.45m x 2.8m
bedroom 4 3.81m x 2.86m
bathroom 2.8m x 2.01m

second floor

bedroom 1 19'5" x 19'
dressing area 10'10" x 6'1"
en-suite 7'10" x 8'11"

bedroom 1 5.83m x 5.8m
dressing area 3.29m x 1.83m
en-suite 2.39m x 2.72m

the orme
4 bed detached

ANWYL
thoughtful homes

NEW HOMES QUALITY CODE

NEW HOMES OMBUDSMAN SERVICE

www.anwylhomes.co.uk

Anwyl Homes is a Registered Developer with the NHQB. This is a computer-generated image of the orme, elevation treatment may vary. Room sizes are approximate, dimensions are taken from the longest room point (please consult Homes Advisor for measurement points). Plots may be handed and any garages may be single or double. Kitchen and bathroom layouts are indicative. These plans are correct at the time of going to press, but may be subject to change during construction. Please ensure that you check for specific plot details. 11/10/24. Orme - Parc Bodafon.

everything considered.