



Victoria Street, Worcester, WR3 7BE

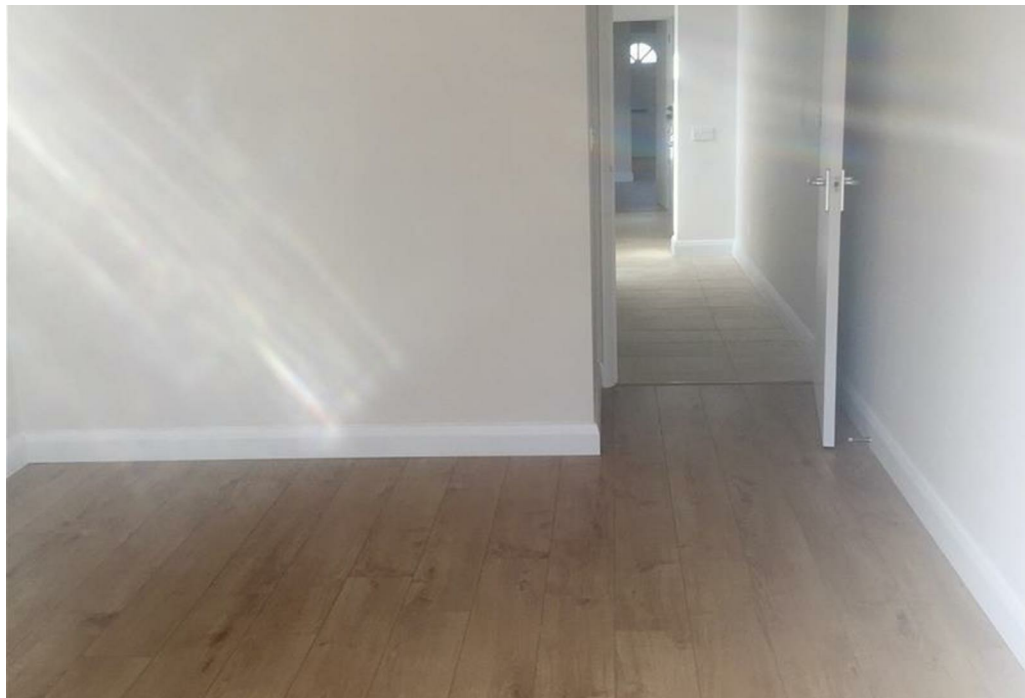
**SHELDON
BOSLEY
KNIGHT**

LAND AND
PROPERTY
PROFESSIONALS

Property Description

We are thrilled to market this three bedroom, Victorian terraced, located in the popular area of Barbourne. This is a spacious property, with 3 double bedrooms, as well as two bathrooms, one to the first floor, and a downstairs wet room. There are two reception rooms with laminate flooring, the second reception having patio doors to the rear garden. Off-Road parking is available to the front of the property. Situated minutes from Cheluvelt Park, local shops and transport links and a short distance to Northwick Primary School.





Key Features

- Spacious Victorian Terrace
- Three Double Bedrooms
- Two Bathrooms
- Two Reception Rooms
- Off-Road Parking
- Close to Northwick Primary School
- Council Tax Band: B
- EPC Rating: C

£1,295 PCM