



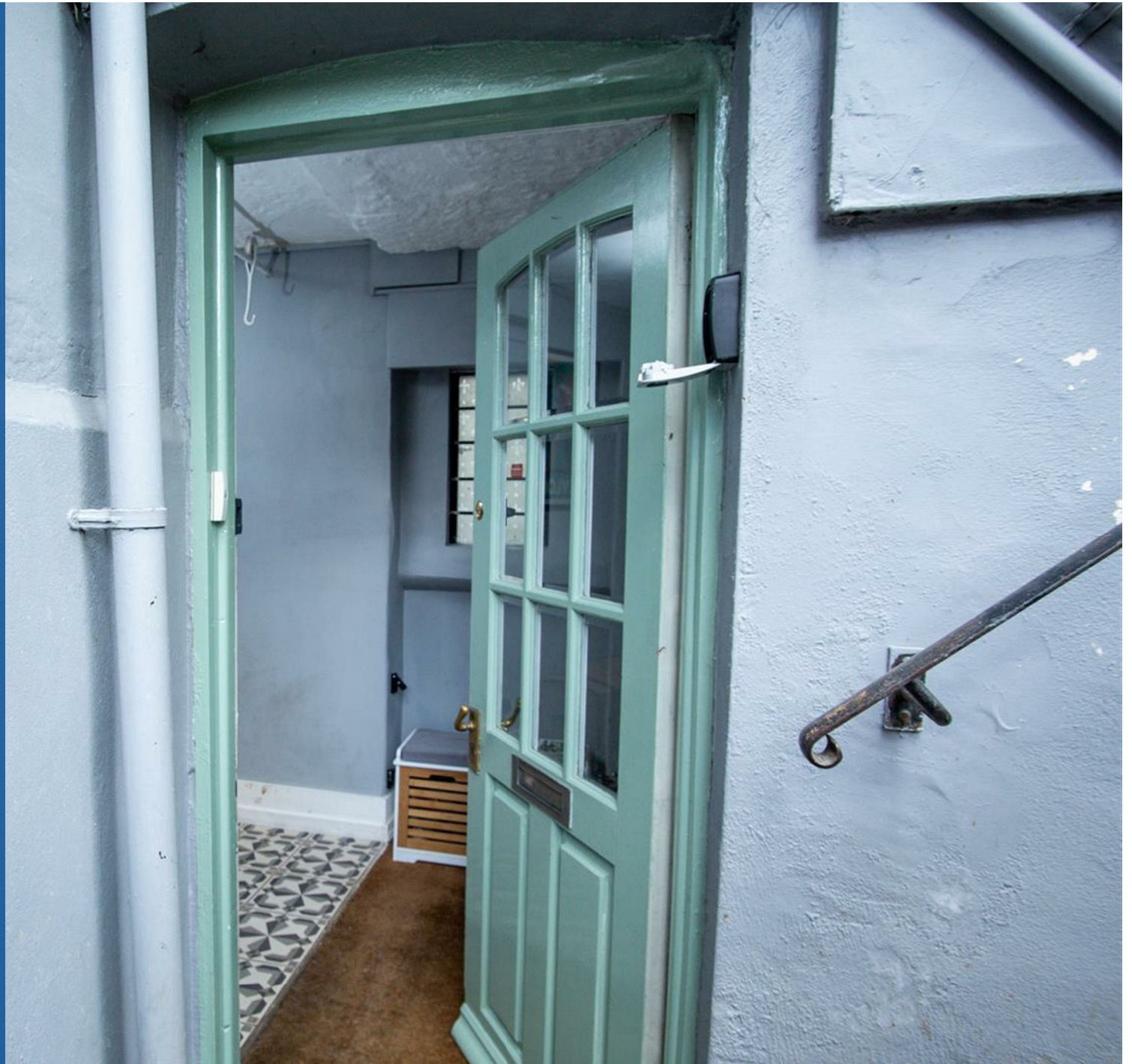
Clarence Road, Cheltenham, GL52 2AY

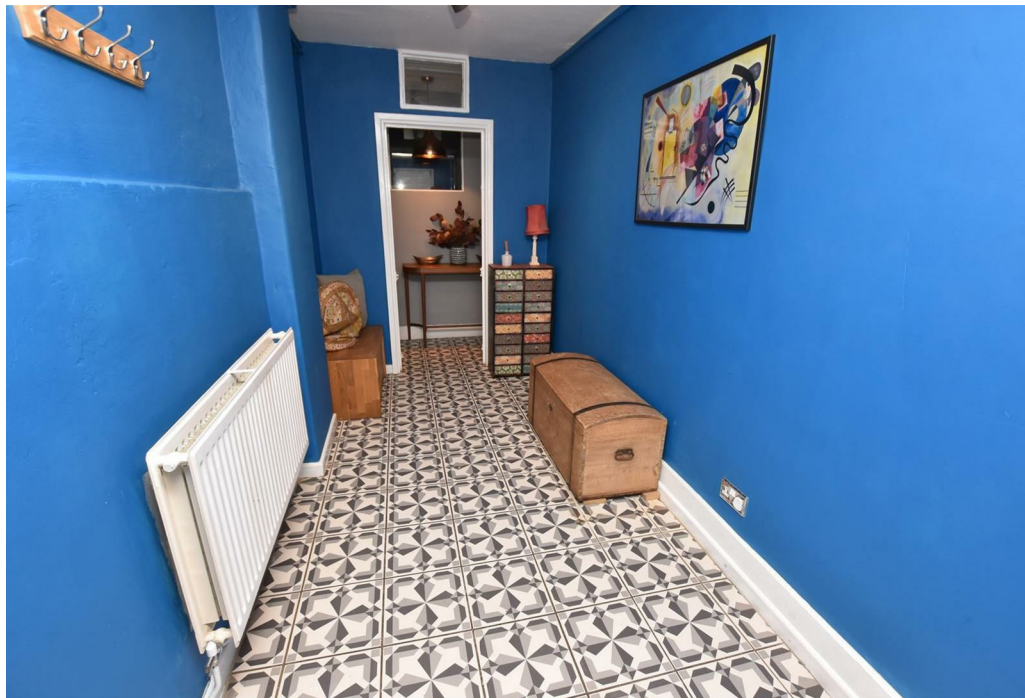
**SHELDON
BOSLEY
KNIGHT** LAND AND
PROPERTY
PROFESSIONALS

Property Description

We are excited to market this stunning centrally located three bedroom apartment in the heart of historic and beautiful Cheltenham, situated within walking distance of the town centre and all amenities. Briefly comprising of a large country kitchen, three generous sized double bedrooms, there is also a separate cloakroom and family bathroom with shower over bath.

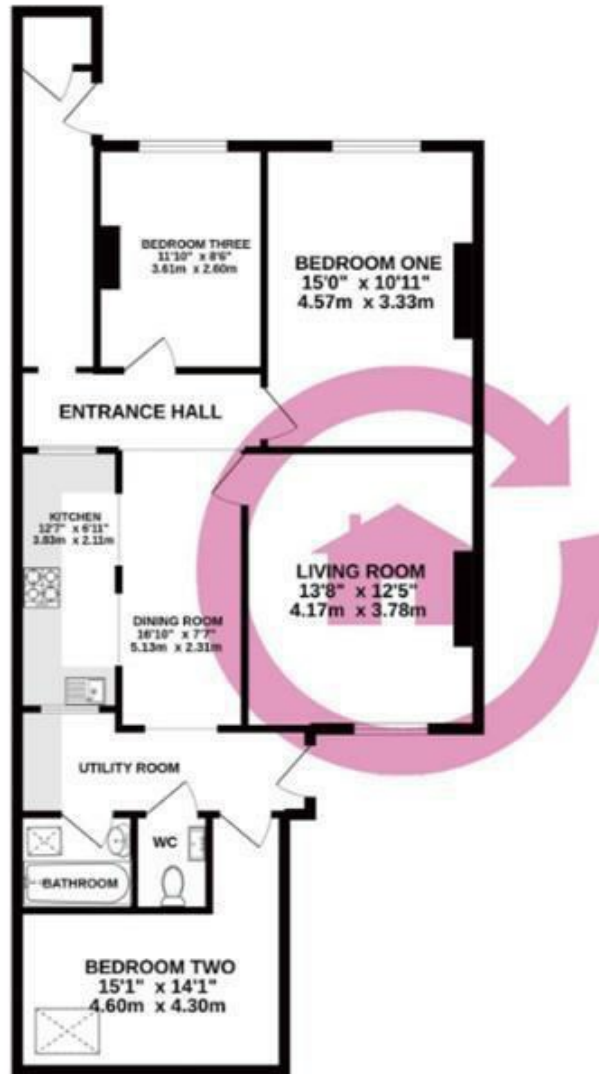
For Broadband and Mobile signal information please use this link <https://checker.ofcom.org.uk/>





GARDEN LEVEL

1119 sq.ft. (104.0 sq.m.) approx.



Key Features

- Central Location
- Close to Local Amenities
- Beautiful Interior
- Part Furnished
- Country Kitchen
- Utility Room
- Council Tax Band: B
- EPC Rating: C

£1,725 Per Month