



The Hawthorns, Hereford, HR2 6SL



# Property Description

We are pleased to offer this modern family home which is located on the popular Saxon Gate residential estate to the South of Hereford City Centre.

The property benefits from a good sized, front facing lounge, downstairs WC and, to the rear of the property a good sized kitchen/diner. The kitchen has been stylishly fitted and comes with an integrated oven/hob & dishwasher, with plenty of space & plumbing for additional appliances. There is also room for a dining table and chairs and access to the rear garden.

Upstairs there are three good sized bedrooms, the master bedroom with an en suite shower room and a family bathroom with shower over bath. To the rear of the property is a good sized, easily maintained garden and the property also benefits from off road parking & a single garage.

This is a lovely property - perfectly situated for travel in to Hereford City Centre and would be perfect for a small professional family looking to make a home  
Council Tax Band C  
EPC Rating C

For Broadband and Mobile signal information please use this link  
<https://checker.ofcom.org.uk/>

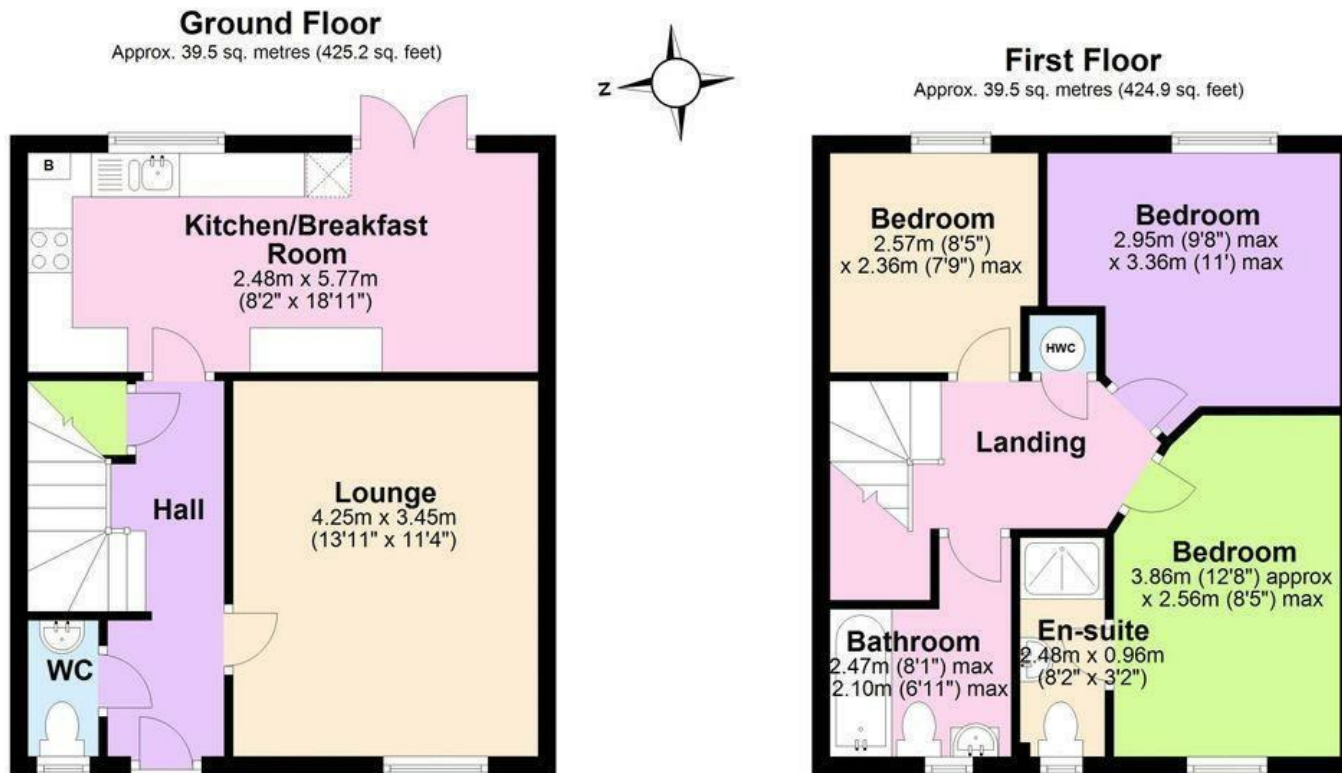






# Key Features

- Popular Location
- Spacious Lounge
- Kitchen / Diner
- Three Bedrooms
- En-Suite Shower Room & Family Bathroom
- Enclosed Rear Garden
- Off Road Parking
- Easily Commutable to Hereford City Centre
- Available End April



Total area: approx. 79.0 sq. metres (850.1 sq. feet)

These plans are for identification and reference only.  
Plan produced using PlanUp.

**9 The Hawthorns, Hereford**

**£1,150 Per  
Calendar Month**