



Addenbrooke Road, Smethwick, B67 6HS

**SHELDON
BOSLEY
KNIGHT**

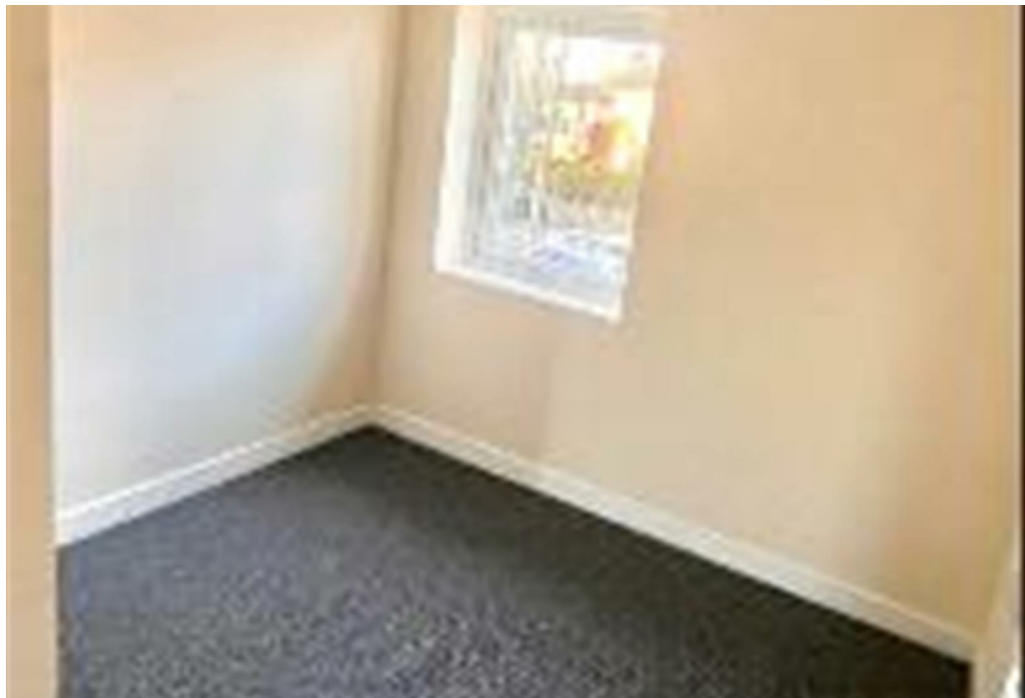
LAND AND
PROPERTY
PROFESSIONALS

Property Description

We are pleased to offer this well presented and modern three bedroom property, which is conveniently situated close to local schools and transport links to Birmingham City Centre.

Briefly comprising of entrance hallways, a spacious reception room, which leads through an open archway to the modern fitted kitchen which also has space for a dining table and chairs. Upstairs has three bedrooms, and a family bathroom with shower over bath. There is driveway parking and a rear garden with slabbed patio area.





Key Features

- Double Glazing
- Gas Centrally Heated
- Driveway Parking
- Council Tax Band: A
- EPC Rating: D

£1,195 PCM