



Dunkirk Crescent | | Halifax | HX1 3TF

Asking price £225,000



SHERIDAN
BAILEY
PROPERTY

Dunkirk Crescent |
Halifax | HX1 3TF
Asking price £225,000

Located on a private row in a crescent of Victorian properties, this home is truly impressive, tastefully decorated and packed with period features. A large Living Room and fabulous Kitchen/Dining provide the homely feel, whilst the home is perfect for a couple or growing families who can benefit with flexible accommodation options thanks to the converted cellar and attic space. The property briefly comprises, long entrance hallway, living room, kitchen/dining, converted cellar and WC. On the first floor is the master bedroom, a double bedroom, and a single bedroom plus house bathroom. On the second floor is a converted attic/bedroom 4. Early viewing recommended, this property offers something for everyone!

- Impressive 4 bedroom Victorian Residence
- Flexible accommodation options
- Situated on private road
- Tastefully decorated with period features
- Converted Cellar & Attic space

Entrance Hall

Front door opens into a long grand hallway, with period features, high ceilings and tiled flooring, a welcoming space, with staircase off to first floor landing.

Living Room

13'10 x 13'2 (4.22m x 4.01m)

Spacious living room full of period features, including ceiling rose and ornate architrave. The room benefits from a large double window to front elevation. A homely space, with a fire surround complete coal effect gas fire, the room is perfect for family living, with ample room for 2 double sofas and living room furniture.





Kitchen / Dining

14'3 x 14'6 (4.34m x 4.42m)

The heart of this home is the in-keeping family kitchen / dining. This room is a real focal point of the property. The kitchen comprises a range of matching shaker style wall and base units with work surfaces over, and tiled splashbacks. There is space for an American style fridge freezer and an integrated dishwasher. Eyes are drawn to brick recess perfectly sized for a range cooker or Aga. This space is perfect for busy daily living and entertaining alike! Door leads to rear garden. Further door leads down to converted cellar

Converted Cellar

14'0 x 13'5 (4.27m x 4.09m)

The converted cellar is a real asset to this home, providing future owners with flexible accommodation options. This is a generous space and could be utilised for a gym, cinema room, home office, lots of options here. There is also the added benefit of a WC.

Staircase to first flooring landing

Master Bedroom

11'7 x 13'2 (3.53m x 4.01m)

Generously sized Master Bedroom with large window to front elevation.

Bedroom 2

7'5 x 14'1 (2.26m x 4.29m)

Good sized double bedroom with window to rear elevation.

Bedroom 3 / Dressing Room

5'11 x 8'9 (1.80m x 2.67m)

Single bedroom with window to front elevation, currently a dressing room.

Bathroom

Good sized bathroom comprising large walk in shower, low level WC, wash handbasin and heated towel rail. Frosted window to rear elevation.

Door and staircase off to second floor

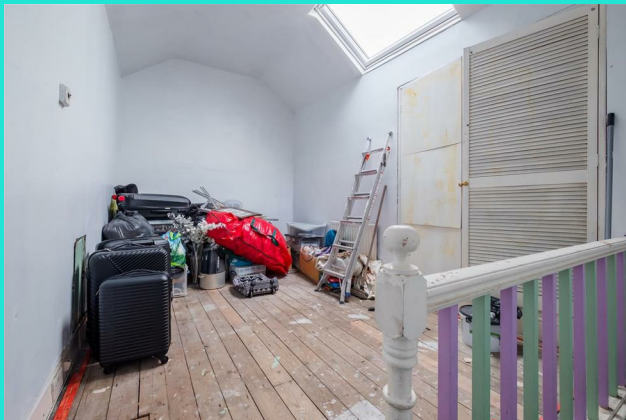
Attic / Bedroom 4

16'7 x 8'11 (5.05m x 2.72m)

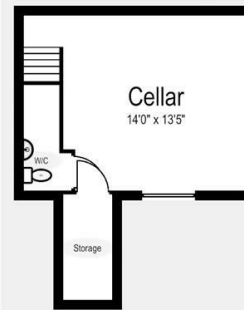
Another additional space to this home providing flexible accommodation options. A light and airy room with large VELUX window, can be an additional bedroom or office

External Areas

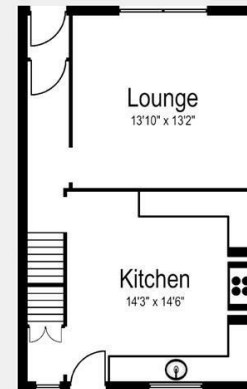
The property is situated on a private road in a crescent of similar Victorian properties. The rear of the property is enclosed with a wrought iron gate providing rear access. There is a low maintenance artificial lawn with ample room for garden furniture and BBQ. The property also includes a nearby car port with provides potential for a garage and has ideal space for external storage.



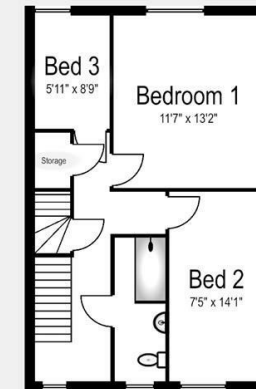
Lower Ground



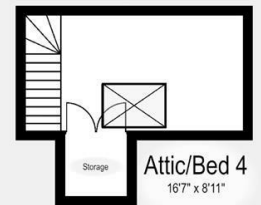
Front Ground



1st Floor

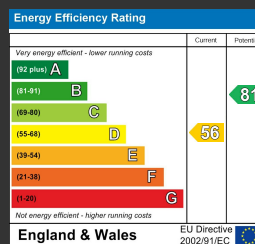


2nd Floor



HX1 3TF
Internal - 1393ft²

This floor plan has been created for illustrative purposes only.
Measurements/dimensions are approximate and layout should only be used for guidance.
Not all storage spaces will be displayed. Internal area is an estimation.



HALIFAX
West Yorkshire

01422 525285
hello@sheridanbaileyproperty.co.uk
sheridanbaileyproperty.co.uk