



Plot 1 – Approved designs.

TRINITY MEWS, DH1

Overview

Welcome to our exclusive plot listing! Here's what you need to know:

Plot Details:

Price: £240,000

Size: 1,291m²

Build Zone: 173m²

Approved House Designs:

This plot comes with approved house designs, which you can review in the below document. By choosing these designs, you can benefit from a discounted replication fee with Fitz Architect. These designs allow for minor amendments, giving you the flexibility to personalise your new home while saving money and time. You won't have to go through the lengthy design process or the planning submission and determination period, meaning you can start building your dream house sooner. We'd be happy to connect you with Fitz Architect to discuss this further.

Bespoke House Designs:

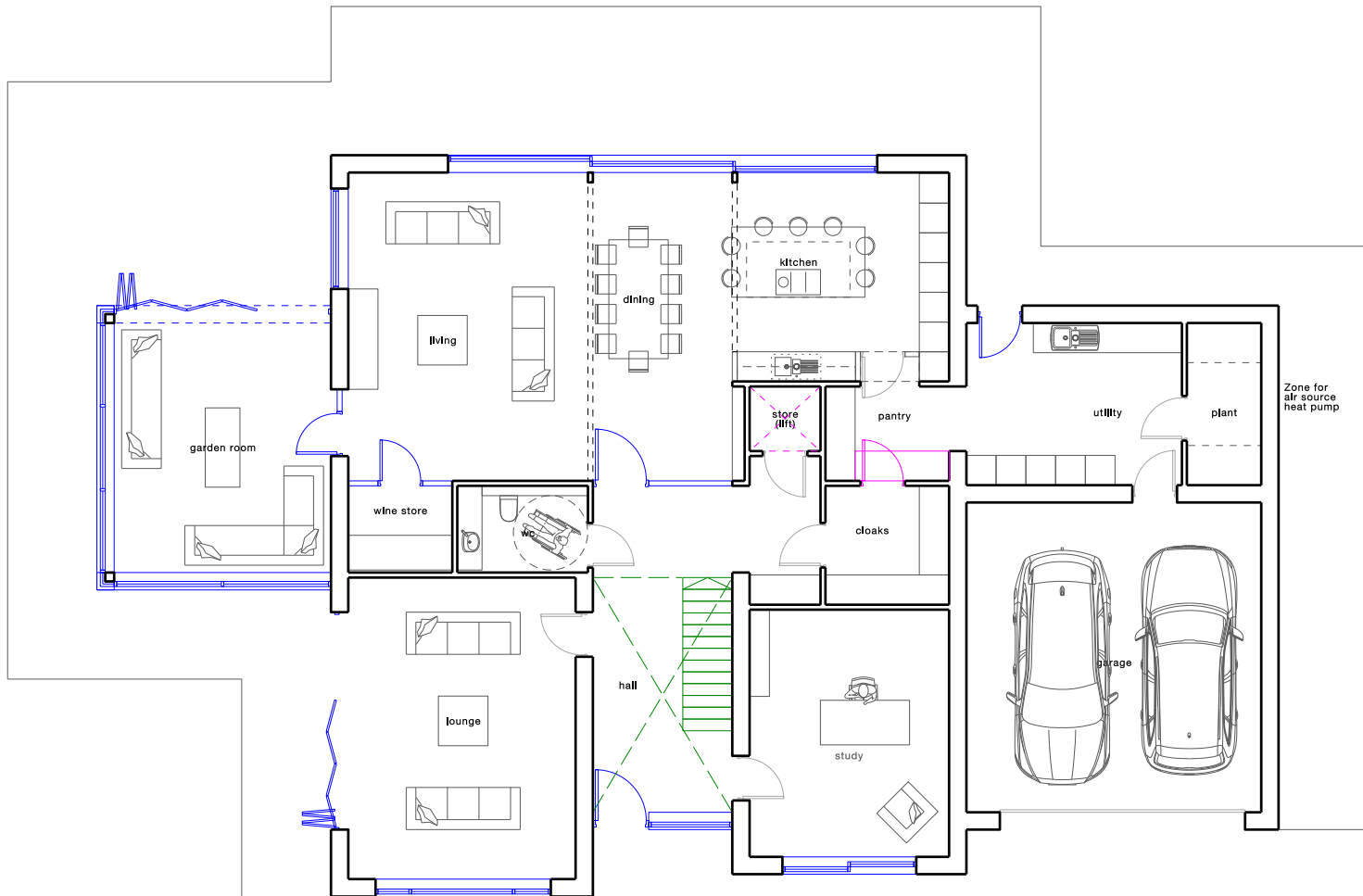
If you prefer a to design your home from scratch, we recommend AC Architect's (ACA) Design Package. ACA is an industry-leading architect firm who contributed to the approved Design Code and Plot Passports, ensuring that his designs are likely to receive planning approval. This comprehensive package includes:

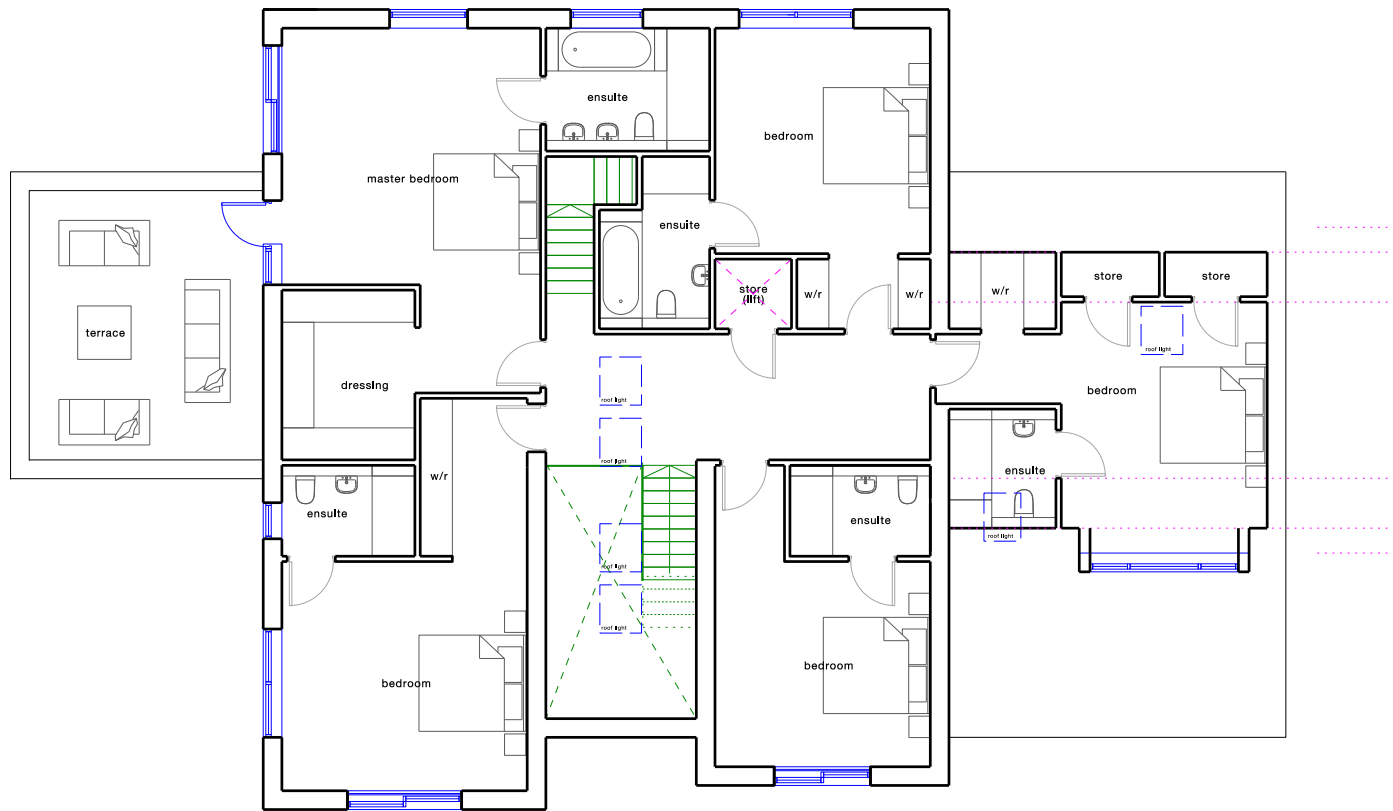
- Architectural design
- Submission for full planning permission
- Construction and technical drawings for Building Regulations and costing purposes
- Support to tender local contractors to build your home

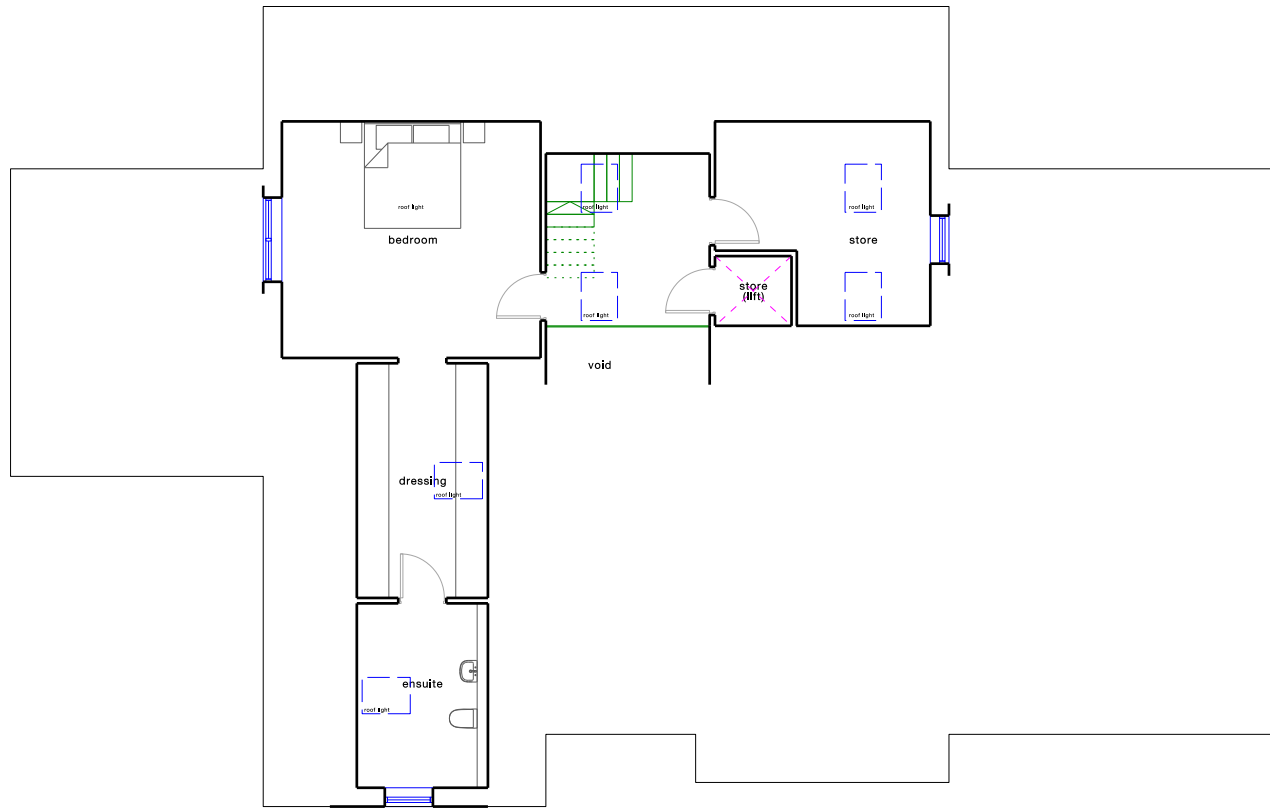
Choosing this package can save you both time and money, streamlining the process of creating your perfect home. ACA has also worked on other plots in this development, providing a wealth of experience and insight.

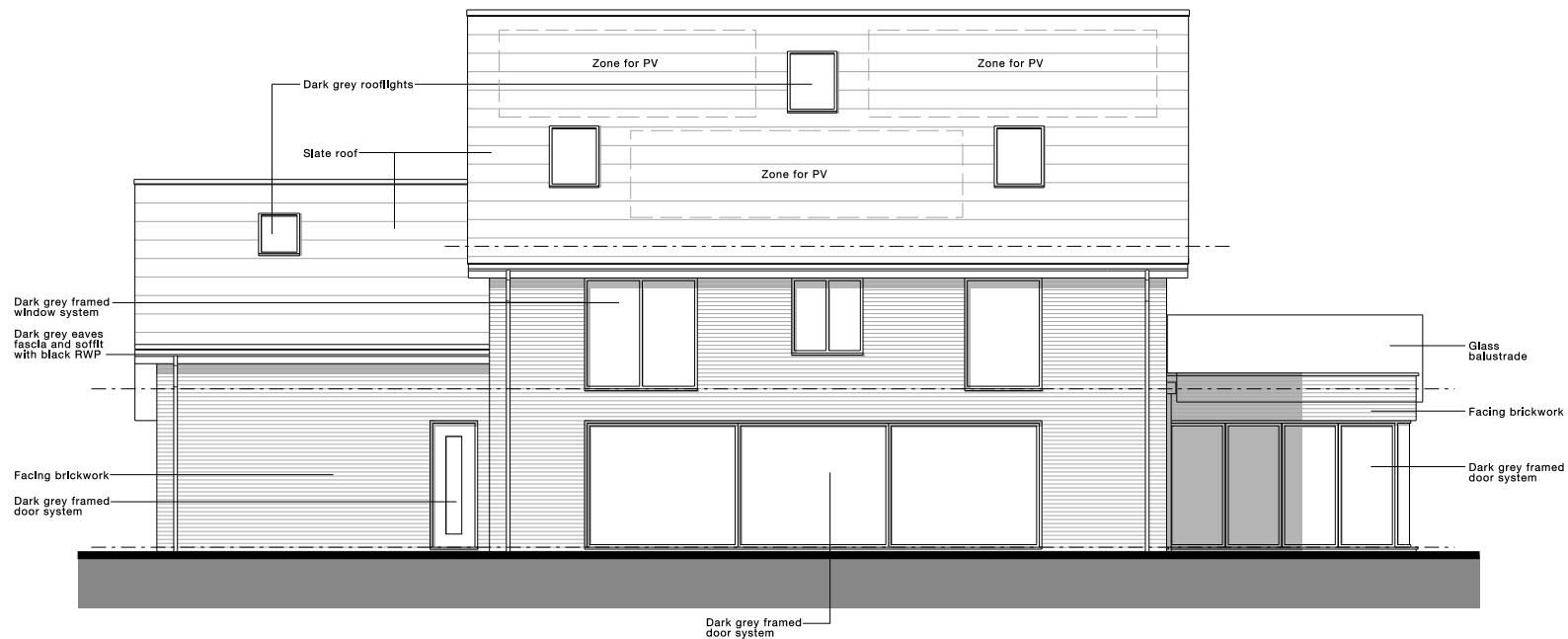
We'd love to arrange a free initial design discovery call with Allan to explore your options and help bring your vision to life.

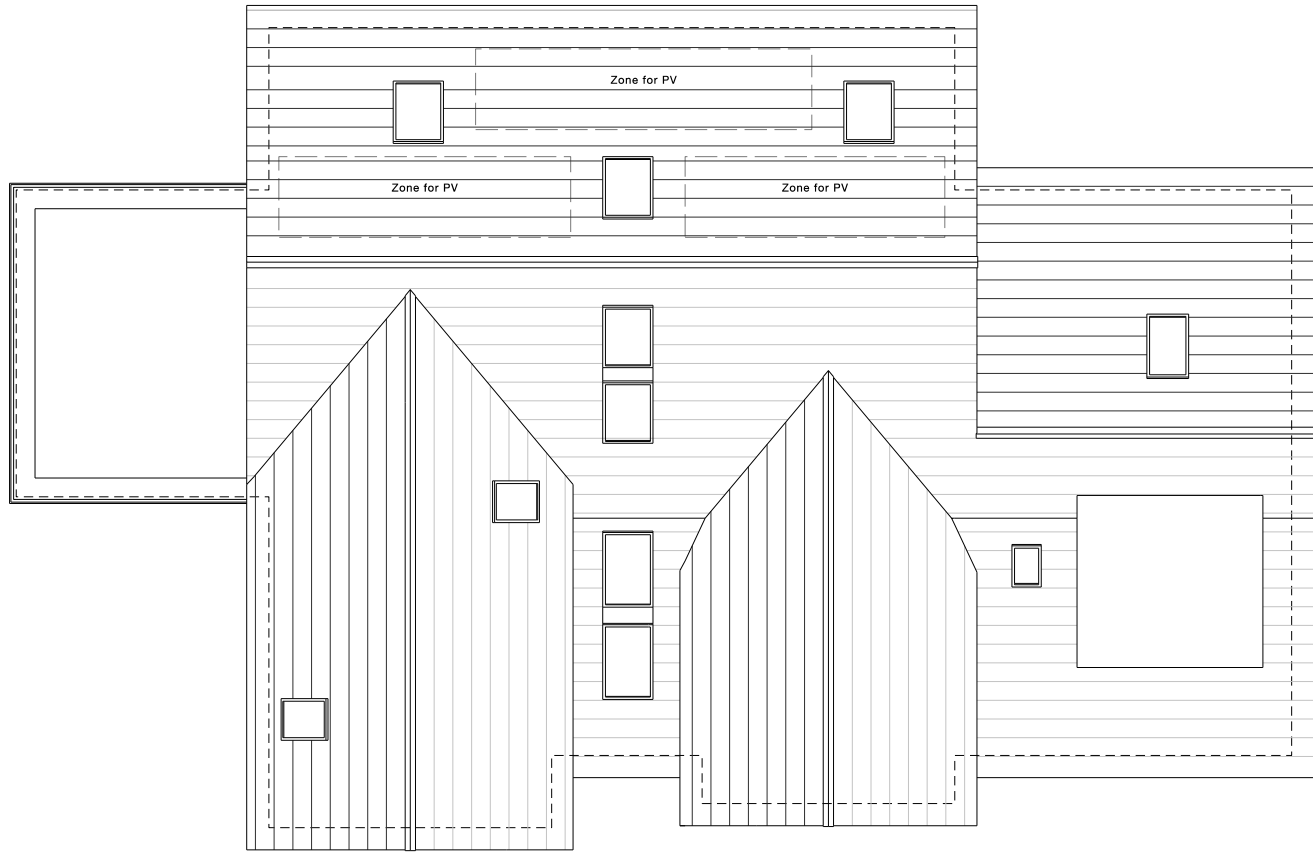


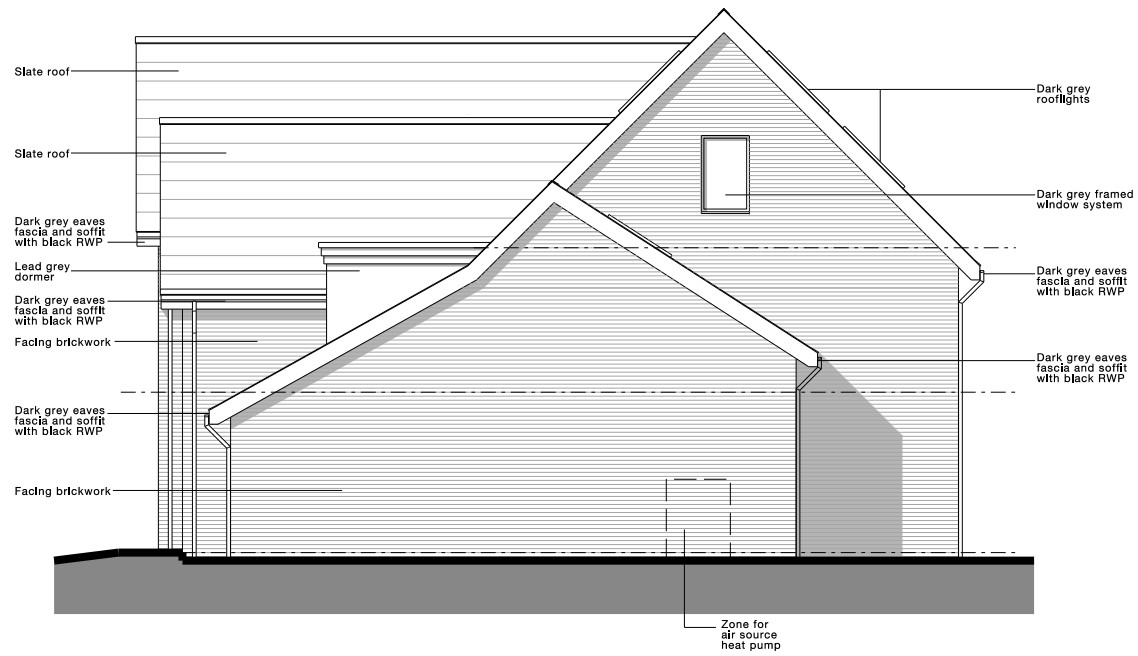




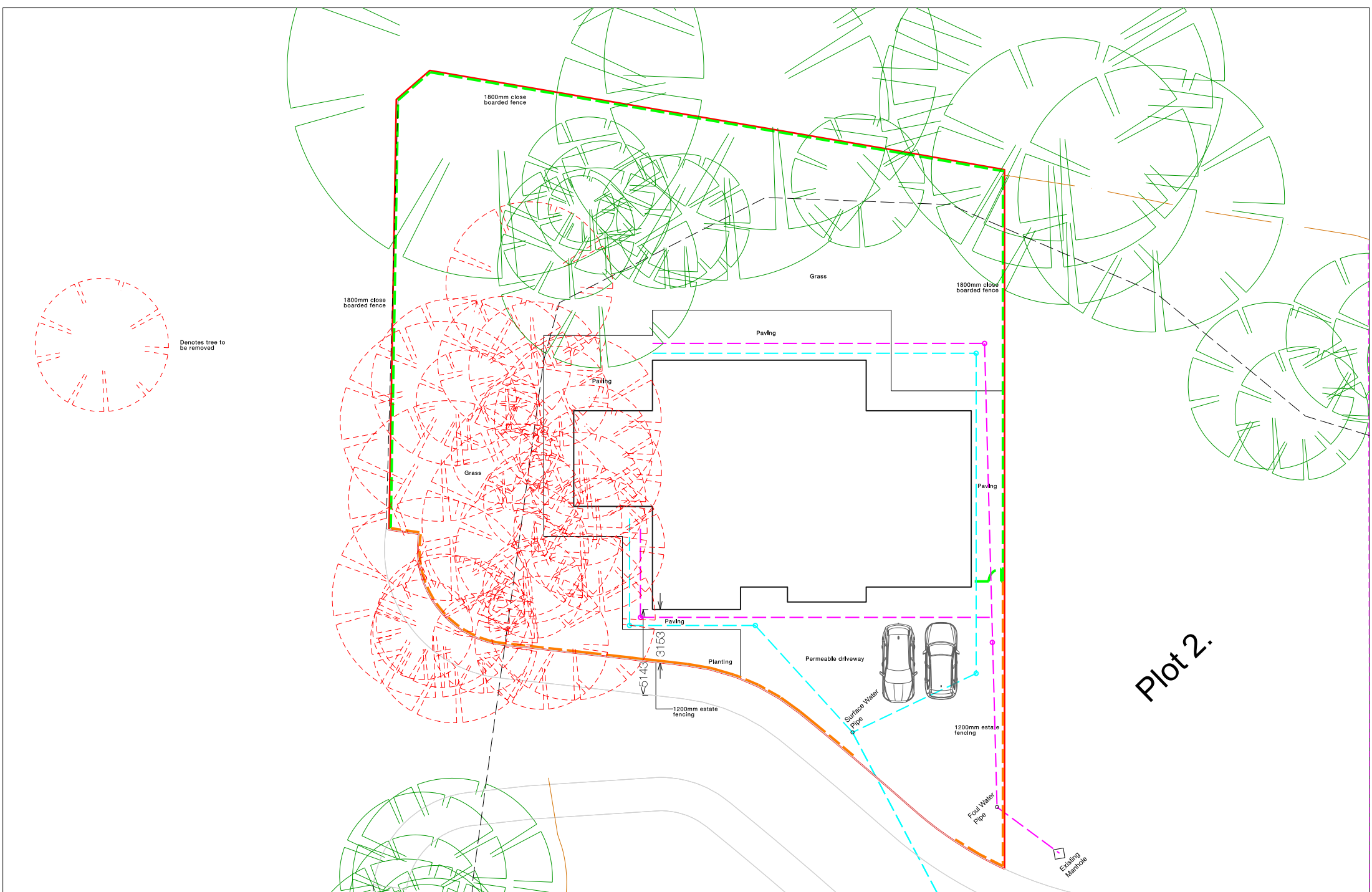












FITZARCHITECTS

6 Pier Point, Marine Walk, Sunderland, SR6 0PP
+44 (0)191 563 7025
www.fitzarchitects.co.uk



Revisions:
B

- A 27 07 2023 Drainage added as planning request
- B 14 08 2023 Dwelling moved back from road 1500mm as agreed with Durham Planning Department

Royal Institute of British Architects Chartered Practice

Copyright of Fitz Architects Limited
Do not scale from drawing, Dimensions are to masonry / studwork openings (not plaster).
This should be 50mm

Project: Plot 1 Trnity Mews, Durham
Drawing: Proposed site plan
Stage: Planning

Project no:	1563	Drawing no:	AL (90) 0030
Date:	April 2023	Scale:	1:200 @ A3



For more information please contact hello@custombuildhomes.co.uk or **0345 223 4452**

Custom Build Homes
Office 24 - Great Michael House
Edinburgh
EH6 7EZ