



Kinross Way, Hinckley, LE10 0WF

Offers in excess of £315,000

Freehold

Taylors
Est. 1992

Spacious three-bedroom detached home

Large reception room

Modern kitchen/diner

Downstairs WC

Master bedroom with en-suite

Three-piece family bathroom

Large and private rear garden

Please contact Taylors to arrange your visit

Property description

Reception room 16'7" x 12'7" (5.08 x 3.84)

Kitchen/diner 16'4" x 9'1" (4.98 x 2.77)

Downstairs WC 6'0" x 2'9" (1.85 x 0.86)

Master bedroom 12'11" x 9'6" (3.96 x 2.90)

Ensuite shower room 6'9" x 4'5" (2.08 x 1.37)

Bedroom two 10'0" x 9'6" (3.05 x 2.90)

Bedroom three

Family bathroom 6'9" x 6'5" (2.08 x 1.98)



Spacious and modern three-bedroom detached home | Large reception room | Modern kitchen/diner | Downstairs WC | Ensuite to master bedroom | Large and private rear garden | Ideal family home | Please contact Taylors to arrange your visit

Situated on a generous plot within a quiet Hinckley development, this modern three-bedroom detached home offers stylish living in a sought-after location. Built in 2015, the property combines well-proportioned rooms with

contemporary finishes and excellent outdoor space.

The ground floor features a welcoming entrance hall, a spacious lounge ideal for relaxing or entertaining, a sleek kitchen/diner with French doors opening onto the garden, and a convenient downstairs WC. Upstairs are three well-sized bedrooms, a family bathroom and an en-suite shower room to the principal bedroom.

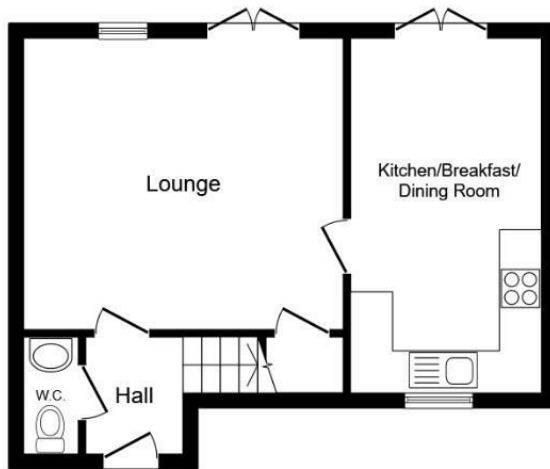
Externally, the standout feature is the larger than average rear

garden, offering plenty of space for families or summer entertaining. There is ample off-road parking on the driveway, a detached garage, and a covered seating area ideal for outdoor dining or storage.

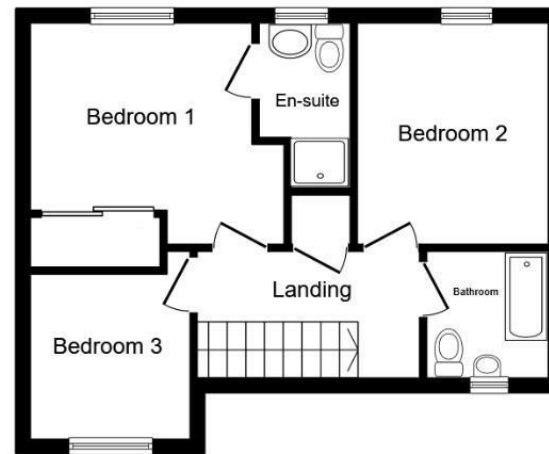
Perfectly suited to growing families or professionals seeking space and comfort with a modern finish, this property is ready to move into and enjoy. Early viewing is highly recommended.



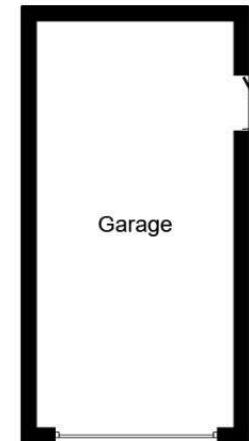




Ground Floor



First Floor



Garage

This floor plan is for illustrative purposes only. It is not drawn to scale. Any measurements, floor areas (including any total floor area), openings and orientations are approximate. No details are guaranteed, they cannot be relied upon for any purpose and do not form any part of any agreement. No liability is taken for any error, omission or misstatement. A party must rely upon its own inspection(s). Powered by www.Propertybox.io

Taylors 1992 Ltd
6 Grove Court, Grove Business Park, Enderby, LE19 1SA
T: 0116 326 6464
E: hello@taylorsestate.agency

Agents Note: Whilst every care has been taken to prepare these sales particulars, they are for guidance purposes only. All measurements are approximate are for general guidance purposes only and whilst every care has been taken to ensure their accuracy, they should not be relied upon and potential buyers are advised to recheck the measurements.

Taylors
 Est. 1992