



Main Street, Dunton Bassett, LE17 5JH

Asking price £199,950

Freehold

Taylors
Est. 1992

Delightful one-bedroom cottage
Situated in a quiet village location
Available with no onward chain
Finished to a lovely standard throughout
Period features
Ideal investment or first home
Please get in touch to arrange your visit

Property description

Kitchen	14'11" x 4'11" (4.57 x 1.52)
Dining area	10'11" x 6'7" (3.35 x 2.01)
Reception room	10'11" x 10'5" (3.35 x 3.20)
Bedroom	10'11" x 10'5" (3.35 x 3.18)
Bathroom	8'5" x 6'11" (2.59 x 2.11)



Beautiful cottage | Idyllic village location | Period features throughout | Ideal investment or first home | Available with no onward chain | Please get in touch to arrange your visit

Set within the charming village of Dunton Bassett, this delightful one-bedroom cottage offers character, comfort and convenience in equal measure. With its whitewashed exterior, exposed brickwork and pretty sash-style windows, the property exudes countryside charm from the moment you arrive.

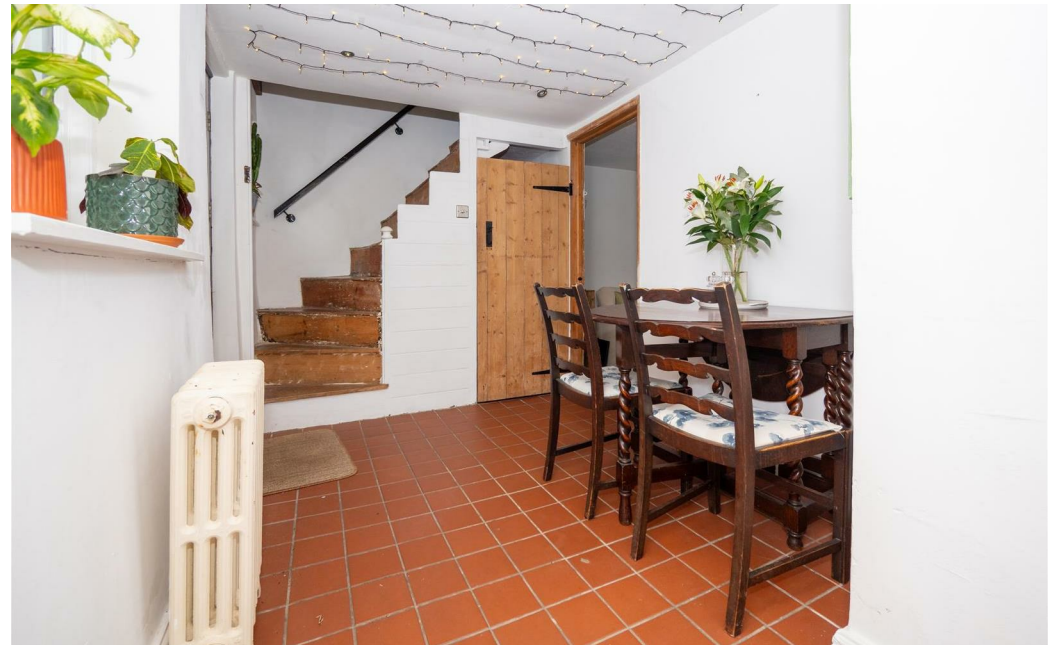
Inside, the home has been lovingly maintained and thoughtfully laid out. The cosy sitting room enjoys natural light from a large front-facing window and features a wood-burning stove that adds warmth and character. The adjoining kitchen is bright and practical, fitted with shaker-style units, wooden worktops and a butler sink, with access through to a quaint dining area that overlooks the rear courtyard.

Upstairs, the double bedroom provides a peaceful retreat, complemented by a generously sized bathroom complete with a roll-top bath and timber flooring. Period

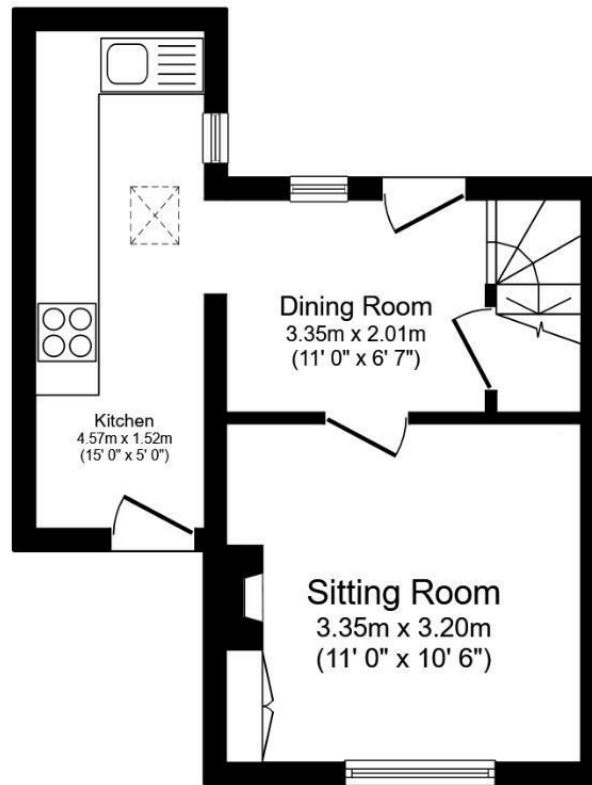
touches are retained throughout, yet the home feels fresh and inviting.

To the rear, a private walled courtyard garden creates a secluded spot for morning coffee or evening drinks, with mature greenery adding a sense of tranquillity. The cottage sits within walking distance of the village pub and countryside walks, while Lutterworth and major road links are just a short drive away.

This is a rare opportunity to own a characterful village home in a sought-after rural setting. Ideal for first-time buyers, downsizers or those seeking a weekend retreat.

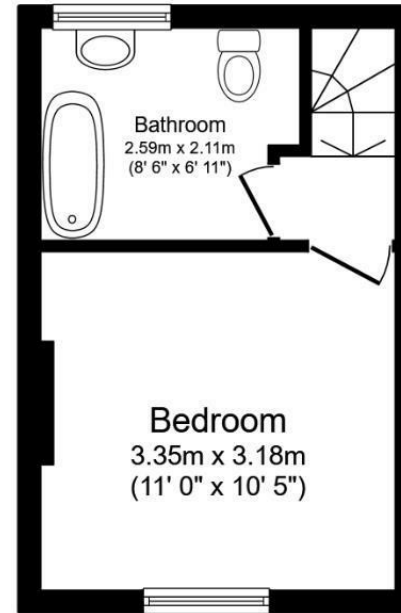






Ground Floor

Floor area 25.9 sq.m. (279 sq.ft.)



First Floor

Floor area 17.8 sq.m. (191 sq.ft.)

Total floor area: 43.7 sq.m. (471 sq.ft.)

This floor plan is for illustrative purposes only. It is not drawn to scale. Any measurements, floor areas (including any total floor area), openings and orientations are approximate. No details are guaranteed, they cannot be relied upon for any purpose and do not form any part of any agreement. No liability is taken for any error, omission or misstatement. A party must rely upon its own inspection(s). Powered by www.Propertybox.io

Taylors 1992 Ltd
6 Grove Court, Grove Business Park, Enderby, LE19 1SA
T: 0116 326 6464
E: hello@taylorsestate.agency

Agents Note: Whilst every care has been taken to prepare these sales particulars, they are for guidance purposes only. All measurements are approximate are for general guidance purposes only and whilst every care has been taken to ensure their accuracy, they should not be relied upon and potential buyers are advised to recheck the measurements.

Taylors
 Est. 1992