



New Parks Boulevard, Leicester, LE3 6QH

Guide price £230,000

Freehold

Taylors

Est. 1992

Guide Price £230,000-£240,000

Spacious three-bedroom home

Modern decor throughout

Close to local amenities and transport links

Separate utility room

Ideal first home

Three-piece bathroom suite

Please contact Taylors to arrange your visit

Property description

Kitchen/diner 16'9" x 13'8" (5.11m x 4.17m)

Reception room 16'9" x 13'2" (5.11m x 4.01m)

Utility room

Master bedroom 13'1" x 10'2" (3.99m x 3.10m)

Bedroom two 12'4" x 10'2" (3.76m x 3.10m)

Bedroom three 9'3" x 7'2" (2.82m x 2.18m)

Bathroom



Guide Price £230,000-£240,000 |
Spacious three-bedroom home |
Situated close to local amenities |
Modern decor throughout | Ideal
first home | Separate utility room
| Please contact Taylors to
arrange your visit

This charming three-bedroom
semi-detached home is situated in
a popular residential area of
Leicester, offering a wonderful
opportunity for families or first-
time buyers. The property exudes
warmth and practicality,
combining classic architecture
with contemporary upgrades.

The exterior boasts a traditional
brick façade with a neatly
maintained front garden, adding
to its kerb appeal. Inside, the
bright and spacious master
bedroom offers a tranquil retreat,
complemented by two additional
well-sized bedrooms, all perfect
for family living. The sleek family
bathroom is fitted with modern
tiles and fixtures, creating a
stylish yet functional space.

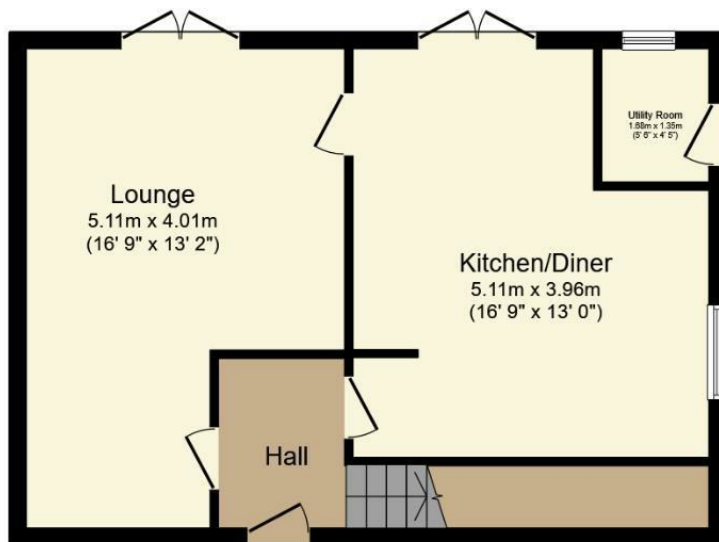
The heart of this home is the
open-plan kitchen and dining
area, where modern design meets
comfort. The fitted kitchen

features chic cabinetry, integrated
appliances, and ample workspace,
making it ideal for entertaining or
family meals. French doors from
the dining area lead directly to
the expansive rear garden, which
is beautifully landscaped and
perfect for outdoor relaxation or
children's play.

This home is situated in a
convenient location close to local
amenities, schools, and transport
links, this property truly caters to
modern family needs.

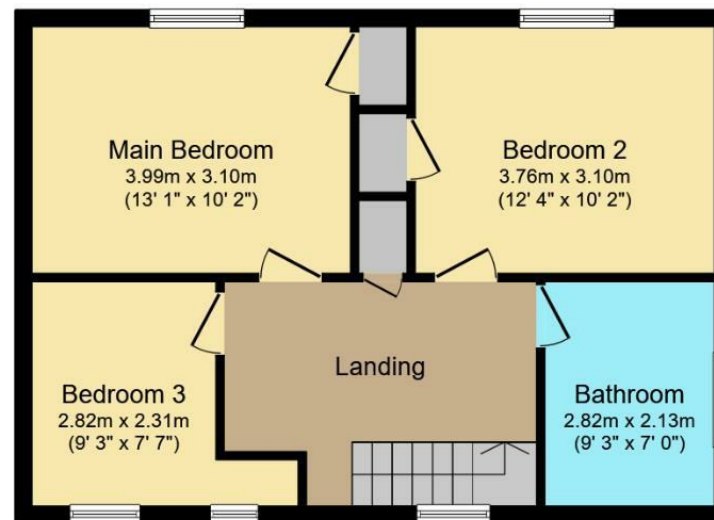






Ground Floor

Floor area 51.6 m² (555 sq.ft.)



First Floor

Floor area 51.6 m² (555 sq.ft.)

TOTAL: 103.1 m² (1,110 sq.ft.)

This floor plan is for illustrative purposes only. It is not drawn to scale. Any measurements, floor areas (including any total floor area), openings and orientations are approximate. No details are guaranteed, they cannot be relied upon for any purpose and do not form any part of any agreement. No liability is taken for any error, omission or misstatement. A party must rely upon its own inspection(s). Powered by www.Propertybox.io

Taylors 1992 Ltd

6 Grove Court, Grove Business Park, Enderby, LE19 1SA

T: 0116 326 6464

E: hello@taylorsestate.agency

Agents Note: Whilst every care has been taken to prepare these sales particulars, they are for guidance purposes only. All measurements are approximate are for general guidance purposes only and whilst every care has been taken to ensure their accuracy, they should not be relied upon and potential buyers are advised to recheck the measurements.

Taylors

Est. 1992