



**Tatlow Road, Leicester, LE3 8NF**

**Asking price £220,000**

**Freehold**

**Taylors**  
Est. 1992



Three-bedroom home  
Spacious throughout  
Modern kitchen  
Three-piece bathroom suite  
Popular location  
Please contact Taylors to arrange your visit

#### Property Description

<b>Reception Room</b>	16'8" x 12'11" (5.09 x 3.94)
<b>Kitchen</b>	16'0" x 6'10" (4.88 x 2.10)
<b>Master Bedroom</b>	12'8" x 10'9" (3.88 x 3.28)
<b>Bedroom Two</b>	12'7" x 9'1" (3.86 x 2.77)
<b>Bedroom Three</b>	8'2" x 8'2" (2.50 x 2.49)
<b>Family Bathroom</b>	7'6" x 5'6" (2.29 x 1.70)





Spacious three-bedroom home |  
Three-piece bathroom suite |  
Highly sought after location |  
Ideal investment or first home |  
Viewings now being taken, please  
contact Taylors to arrange your  
visit!

For sale: Spacious three-bedroom  
home on Tatlow Road, Leicester  
(LE3).

This charming mid-terrace  
property presents a fantastic  
opportunity for families or first-  
time buyers looking for a well-  
proportioned home in a

convenient location.

On the ground floor, the home  
welcomes you with a bright and  
spacious lounge/dining area,  
perfect for family living and  
entertaining. The kitchen is well-  
equipped with ample storage and  
workspace, offering views of the  
rear garden.

The first floor comprises three  
comfortable bedrooms, including  
a generously sized master  
bedroom. The modern bathroom  
is fully tiled and features a  
bathtub with an overhead shower.

Externally, the property benefits  
from a private driveway with  
space for two vehicles. The rear  
garden includes an outbuilding,  
providing useful additional  
storage for tools or hobbies.

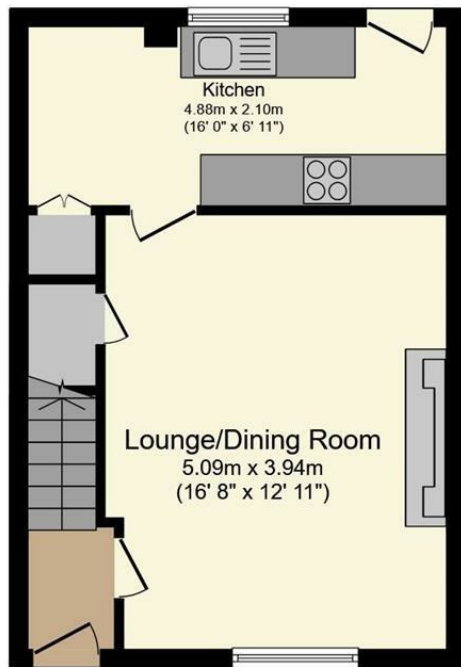
Situated close to local schools,  
shops, and excellent transport  
links, this property perfectly  
combines comfort and  
convenience. Book your viewing  
today!



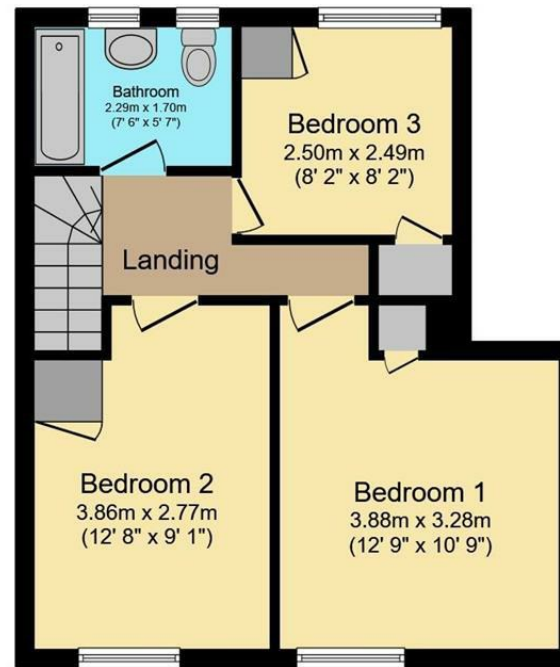




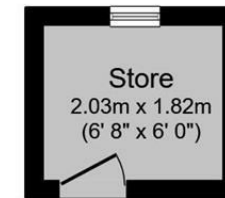




**Ground Floor**



**First Floor**



**Outbuilding**

Total floor area 79.5 sq.m. (856 sq.ft.) approx

This floor plan is for illustrative purposes only. It is not drawn to scale. Any measurements, floor areas (including any total floor area), openings and orientation are approximate. No details are guaranteed, they cannot be relied upon for any purpose and they do not form part of any agreement. No liability is taken for any error, omission or misstatement. A party must rely upon its own inspection(s). Plan produced for Purplebricks. Powered by [www.focalagent.com](http://www.focalagent.com)

**Taylors 1992 Ltd**

**6 Grove Court, Grove Business Park, Enderby, LE19 1SA**

**T: 0116 326 6464**

**E: [hello@taylorsestate.agency](mailto:hello@taylorsestate.agency)**

Agents Note: Whilst every care has been taken to prepare these sales particulars, they are for guidance purposes only. All measurements are approximate are for general guidance purposes only and whilst every care has been taken to ensure their accuracy, they should not be relied upon and potential buyers are advised to recheck the measurements.

**Taylors**

Est. 1992