



The Ridings, Rothley, Leicester, LE7 7SL

Asking price £1,500,000

Freehold

Taylor's

Est. 1992

Luxurious six-bedroom detached home

Off-road parking and double garage

Four spacious reception rooms

Large and private rear garden with an outdoor swimming pool

Modern kitchen/diner

Four bath/shower rooms

Highly popular location

Please contact Taylors to arrange your visit!



Property description

Entrance hall	12'6" x 12'1" (3.82 x 3.7)
Kitchen/diner	21'3" x 14'8" (6.49 x 4.48)
Utility room	9'1" x 4'9" (2.77 x 1.47)
Living room	18'2" x 12'6" (5.56 x 3.83)
Family room	19'4" x 13'4" (5.90 x 4.08)
Dining room	13'5" x 9'1" (4.09 x 2.79)
Sitting room	13'10" x 6'6", 262'5" (4.23 x 2.80)
Downstairs WC	7'6" x 3'1" (2.31 x 0.94)
Landing	29'9" x 6'4" (9.09 x 1.95)
Master bedroom	18'2" x 17'4" (5.56 x 5.29)
Ensuite bathroom	12'5" x 10'9" (3.81 x 3.28)
Sauna	8'3" x 5'10" (2.52 x 1.80)
Bedroom two	14'9" x 12'6" (4.50 x 3.82)
Ensuite bathroom	10'6" x 10'4" (3.21 x 3.15)
Walk-in wardrobe	12'6" x 6'2" (3.82 x 1.89)
Bedroom three	12'6" x 10'9" (3.82 x 3.28)
Ensuite shower room	6'3" x 6'3" (1.93 x 1.92)
Bedroom four	12'11" x 10'5" (3.96 x 3.20)
Bedroom five	12'0" x 10'3" (3.66 x 3.13)
Bedroom six/Office	14'10" x 8'4" (4.53 x 2.56)
Family bathroom	10'6" x 8'2" (3.21 x 2.50)



Stunning six-bedroom detached home | Positioned in the desirable village of Rothley | Four reception rooms | Four bathrooms | Off-road parking and double garage | Large rear garden with swimming pool | Please contact Taylors to arrange your visit!

Property Description: Luxurious Six-Bedroom Detached House in Rothley, Leicestershire, LE7

Welcome to this stunning six-bedroom detached house located in the desirable village of Rothley, Leicestershire. This expansive property is the epitome of luxury living, featuring an array of high-end amenities and elegant finishes throughout.

Exterior Features:

- Situated on a generous plot, the property boasts an inviting façade with well-maintained gardens and a large driveway providing ample parking space.
- The rear garden is an entertainer's dream, featuring a beautiful outdoor swimming pool surrounded by a spacious patio area perfect for lounging and hosting summer gatherings.
- The garden also includes a charming pool house and additional storage sheds.

Ground Floor:

- Upon entering, you are greeted by a welcoming hallway that sets the tone for the rest of the home.
- The ground floor comprises four impressive reception rooms, including a formal dining room, a cozy sitting room, a versatile family room, and a bright living room with large windows overlooking the garden.
- The modern eat-in kitchen is the heart of the home, complete with high-end appliances, ample cabinetry, and a large island, ideal for casual dining and family gatherings.
- Additionally, there is a practical utility room and a convenient WC on this level.

First Floor:

- The first floor offers six double bedrooms, ensuring plenty of space for family and guests.
- Three of the bedrooms feature luxurious en-suite bathrooms, providing privacy and comfort.
- The master suite is a true retreat, with a spacious layout, a deluxe en-suite, and a serene sauna, perfect for unwinding after a long day.
- An additional well-appointed family bathroom serves the other bedrooms.
- A dedicated office space on this floor offers a quiet area for work or study.

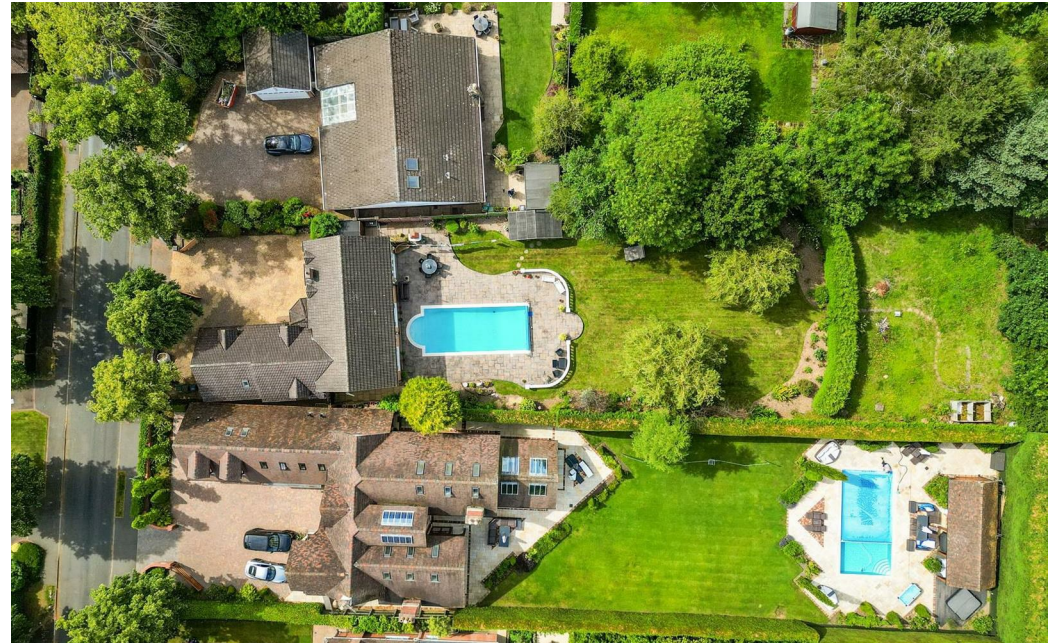
Interior Highlights:

- The entire house is beautifully decorated with a tasteful blend of modern and traditional elements, creating a warm and inviting atmosphere.
- High-quality finishes and attention to detail are evident throughout, from the stylish lighting fixtures to the elegant flooring and fittings.

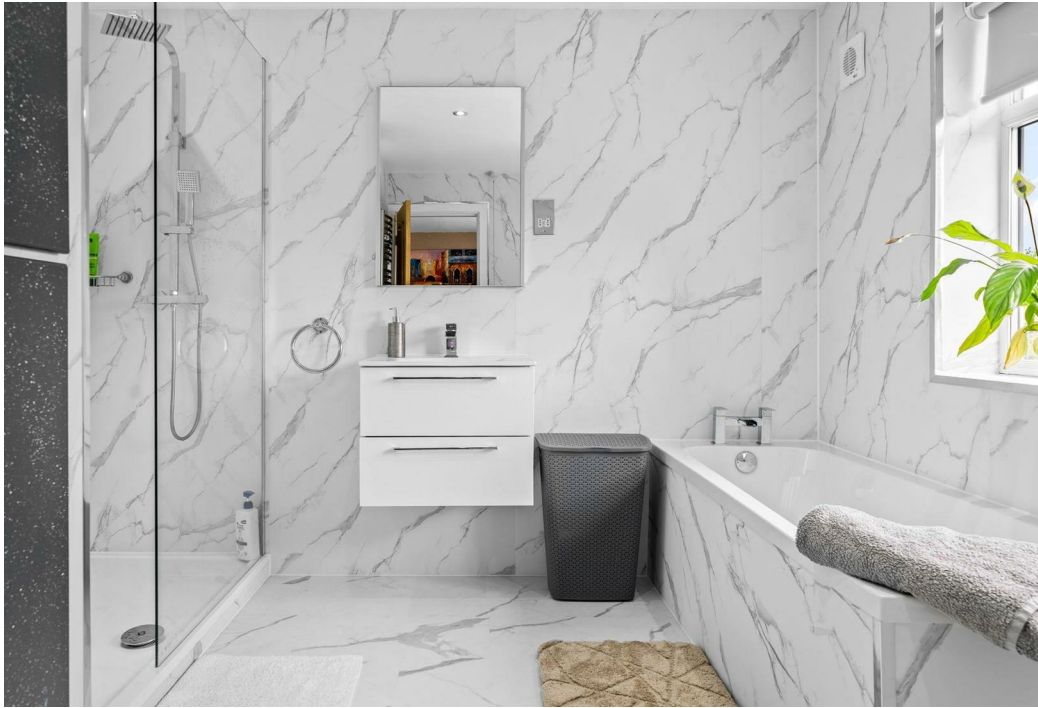
Location:

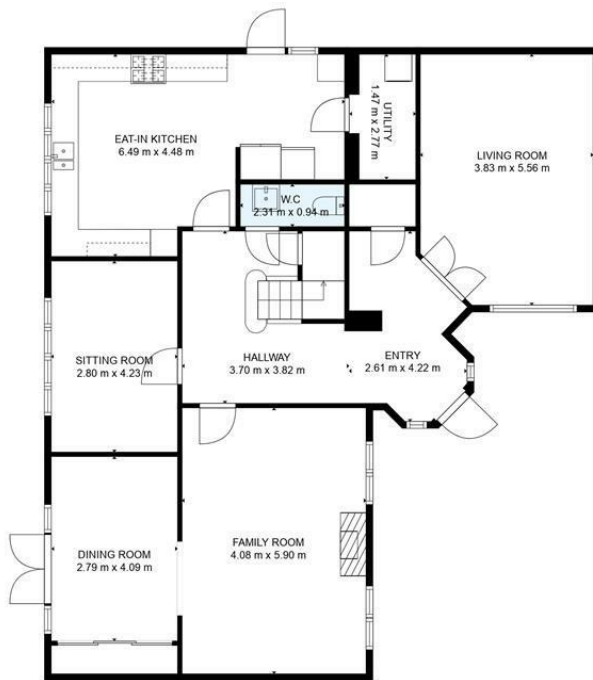
- Situated in the picturesque village of Rothley, the property enjoys a tranquil setting while being conveniently close to local amenities, schools, and transport links.
- Rothley offers a charming community feel with its historic buildings, local shops, and beautiful countryside, making it an ideal location for families and professionals alike.

This exceptional property in Rothley, Leicestershire, offers an unparalleled lifestyle with its luxurious features, spacious layout, and prime location. Don't miss the opportunity to make this exquisite house your new home. Contact us today to arrange a viewing and experience the elegance and comfort this property has to offer.

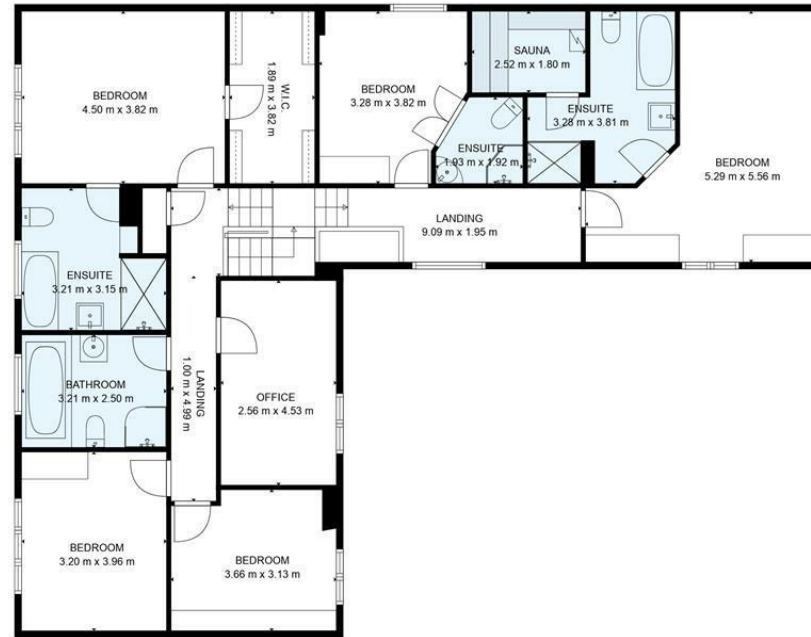








FLOOR 1



FLOOR 2



TOTAL: 285 m2
FLOOR 1: 129 m2, FLOOR 2: 156 m2

FLOOR PLAN CREATED BY CUBICASA APP, MEASUREMENTS DEEMED HIGHLY RELIABLE BUT NOT GUARANTEED.

Taylors 1992 Ltd
 6 Grove Court, Grove Business Park, Enderby, LE19 1SA
 T: 0116 326 6464
 E: hello@taylorsestate.agency

Agents Note: Whilst every care has been taken to prepare these sales particulars, they are for guidance purposes only. All measurements are approximate are for general guidance purposes only and whilst every care has been taken to ensure their accuracy, they should not be relied upon and potential buyers are advised to recheck the measurements.

