



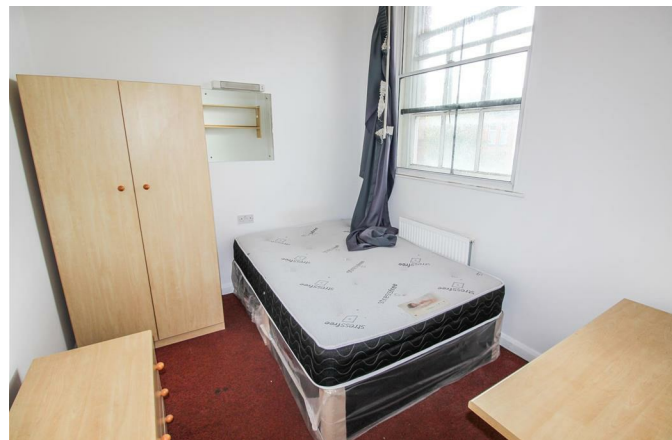
**Towles Mill, Queens Road, Loughborough, LE11 1GG**

**Asking price £250,000**

Leasehold

- Ideal investment opportunity
- Currently achieving £18,000 per annum
- Six double bedrooms
- Two shower rooms
- Spacious kitchen/diner and communal area
- Excellent location in Loughborough
- Please contact Smooth to arrange your visit
- NO GROUND RENT
- £1,580 per annum service charge

### Property Description



Positioned close to the centre of Loughborough, this spacious six double bedroom home which is currently rented for £18,000 per annum, offering a gross yield of 7.2%! This house has a FULL HMO (House of Multiple Occupancy) licence as if available with no upward chain.





6 Grove Court, Grove Park, Leicester, LE19 1SA

T: 0116 326 6464

E: [hello@taylorsestate.agency](mailto:hello@taylorsestate.agency)

Agents Note: Whilst every care has been taken to prepare these sales particulars, they are for guidance purposes only. All measurements are approximate are for general guidance purposes only and whilst every care has been taken to ensure their accuracy, they should not be relied upon and potential buyers are advised to recheck the measurements.