



Cross Street, Old Town, Swindon, SN1 3JT

£900 Per month

- One Bedroom
- Modern Bathroom
- Modern Fitted-Kitchen
- Courtyard Garden
- Well-Presented Throughout
- Council Tax Band A
- Convenient Central Swindon Location
- Available Mid-End October 2024



An extremely well-presented, one-bedroom apartment, set in the heart of Swindon.

This apartment boasts an entrance hall, good-sized living area, well appointed kitchen, double bedroom, and a modern bathroom. This property comes with the added benefit of a courtyard garden area.

Swindon is the commercial centre of the South West, offering a wide range of amenities. Old Town, as its name suggests, is the original market town area before the rapid expansion of Swindon took place with the coming of the Great Western Railway. It retains a distinct style and charm of its own, as well as offering more local amenities. Communications in the area are excellent, with frequent train services to London

Paddington from Swindon Station in under 50 minutes.

Council Tax Band - A

Available mid-end October 2024.

Unfurnished - White goods included.

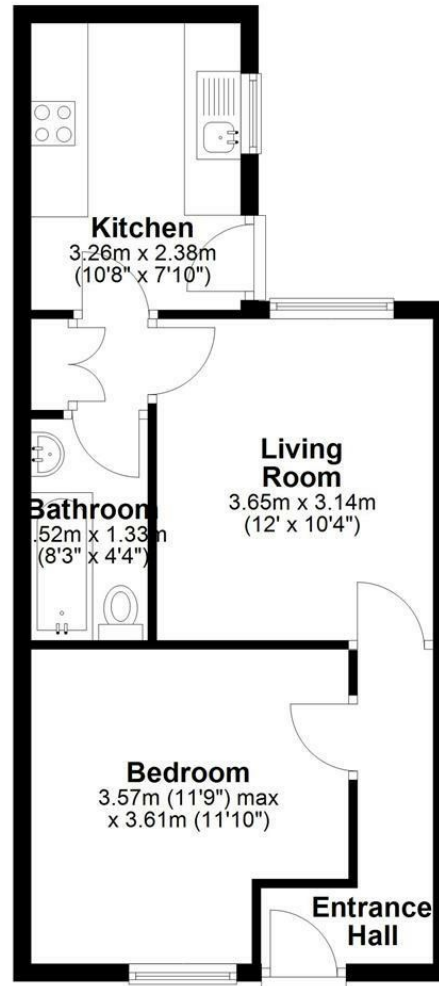
No pets, no smokers.





Ground Floor

Approx. 41.5 sq. metres (446.9 sq. feet)



Total area: approx. 41.5 sq. metres (446.9 sq. feet)

6 Grove Court, Leicester, Leicestershire, LE19 1SA

T: 0116 326 6262

E: hello@smoothonline.co

Agents Note: Whilst every care has been taken to prepare these sales particulars, they are for guidance purposes only. All measurements are approximate and for general guidance purposes only and whilst every care has been taken to ensure their accuracy, they should not be relied upon and potential buyers are advised to recheck the measurements.