



**Farringdon Road, Islington, London, EC1M 3HA**

**£2,500 Per month**

- Fifth Floor Apartment
- One Double Bedroom
- Luxury Apartment
- Close to Farringdon Station and Chancery Lane
- Available Now
- Unfurnished
- High Finish Throughout



A perfect example of Victorian, Venetian Gothic architecture - An extremely popular design in London during the late 1800s. The building itself is both breath-taking and iconic.

This spacious apartment is located on the 5th floor, with great views to the front of the building. The property comprises of entrance hall, living room, kitchen, double bedroom with fitted wardrobe area, large bathroom and storage areas. This property also benefits from a day-porter.

Now Grade II listed, the building is located on the corner of Farringdon Road and Greville Street. Designed by the Architects Arding and Bond (1873–1875), the building was occupied by Bradbury, Wilkinson & Co who were renowned

engravers, printers of bank notes, postage stamps and share certificates. The building was re-modelled behind its original façade circa 1990 by GML Architects.

Its location could not be more central with the entrances of Farringdon Underground and mainline Stations a mere one hundred meters away providing quick and easy access to the City and Central London via the Elizabeth line, mainline links as well as Circle, Metropolitan and Hammersmith & City underground routes.

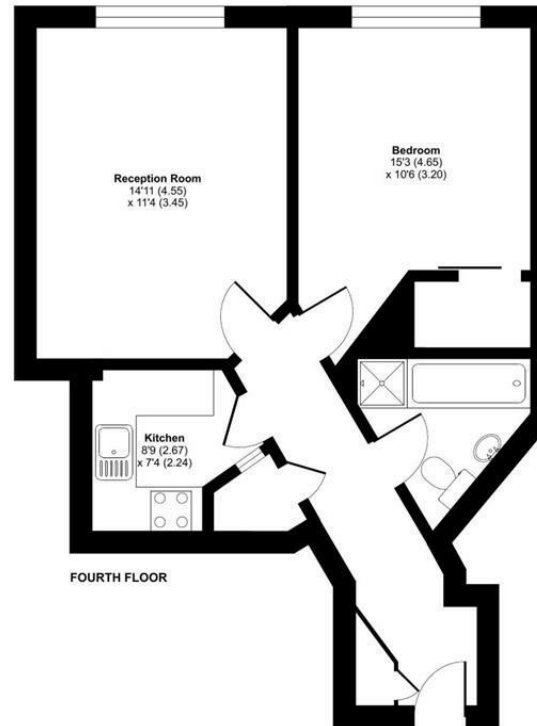




## Farringdon Road, London, EC1

Approximate Area = 516 sq ft / 47.9 sq m

For identification only - Not to scale



Floor plan produced in accordance with RICS Property Measurement Standards incorporating International Property Measurement Standards (IPMS2 Residential). © nichecom 2022. Produced for Antony Aslan Limited. REF: 876815

6 Grove Court, Leicester, Leicestershire, LE19 1SA

T: 0116 326 6262

E: [hello@smoothonline.co](mailto:hello@smoothonline.co)

Agents Note: Whilst every care has been taken to prepare these sales particulars, they are for guidance purposes only. All measurements are approximate and for general guidance purposes only and whilst every care has been taken to ensure their accuracy, they should not be relied upon and potential buyers are advised to recheck the measurements.