



Beagle Close, Leicester, LE4 5BR

£1,000 Per month

- Two bedroom apartment
- Modern kitchen/diner
- Three piece bathroom suite
- Ground floor
- Allocated parking
- Available 17th January 2024
- Please contact Smooth to arrange your visit

Kitchen/Diner

23'4" x 19'4" (7.11m x 5.89m)

Master Bedroom

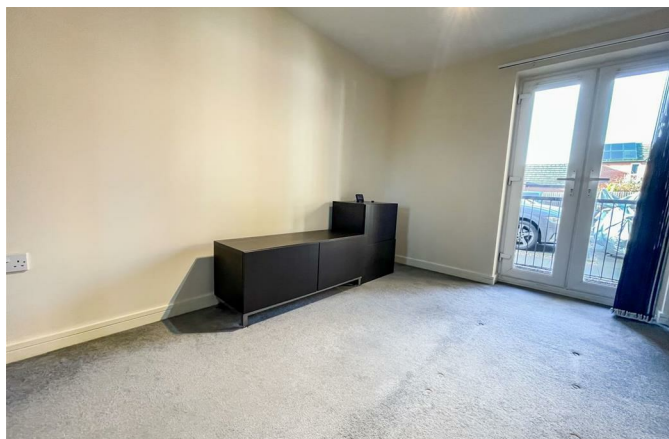
10'5" x 8'9" (3.18m x 2.67m)

Bedroom Two

9'1" x 7'5" (2.77m x 2.26m)

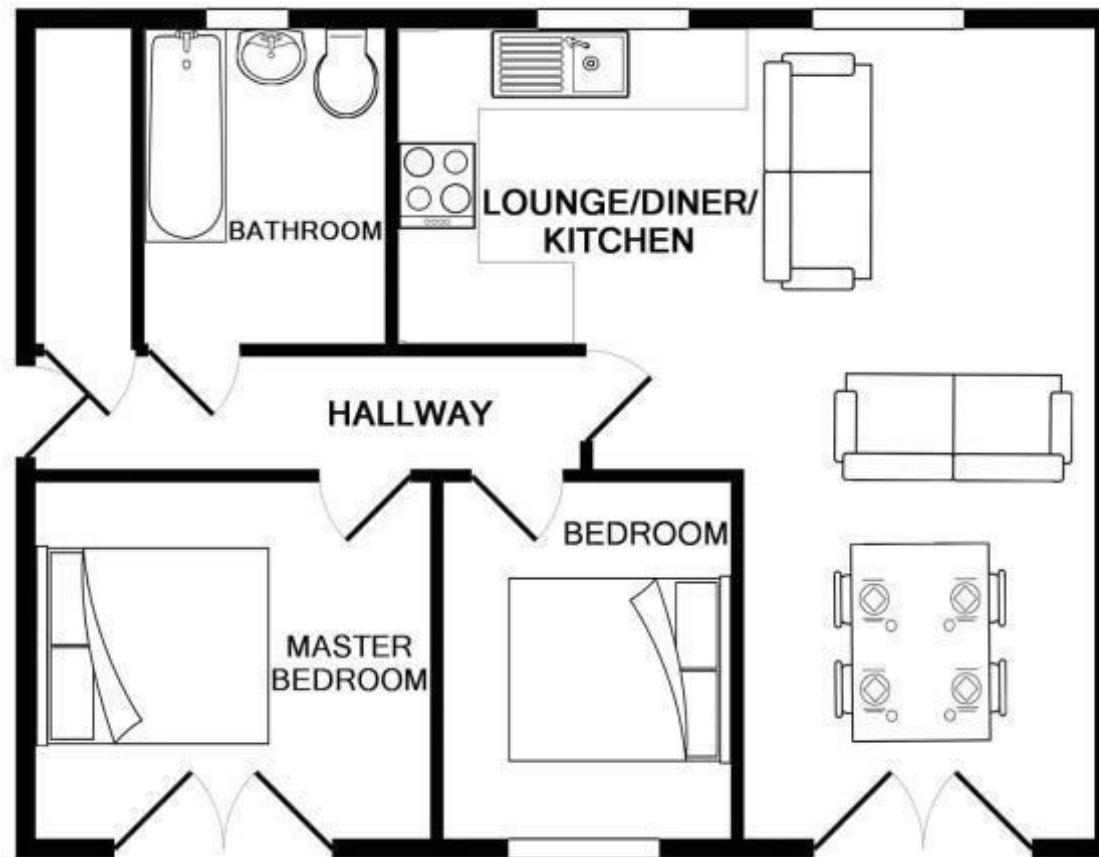
Bathroom

8'5" x 7'2" (2.57m x 2.18m)



Modern two-bedroom ground floor apartment | Fitted kitchen | Spacious dining area | Three-piece bathroom suite | Allocated parking | Close to local amenities | Available beginning of June 2024, please contact Smooth to arrange your visit





Whilst every attempt has been made to ensure the accuracy of the floor plan contained here, measurements of doors, windows, rooms and any other items are approximate and no responsibility is taken for any error, omission, or mis-statement. This plan is for illustrative purposes only and should be used as such by any prospective purchaser. The services, systems and appliances shown have not been tested and no guarantee as to their operability or efficiency can be given
Made with Metropix ©2017

6 Grove Court, Leicester, Leicestershire, LE19 1SA

T: 0116 326 6262

E: hello@smoothonline.co

Agents Note: Whilst every care has been taken to prepare these sales particulars, they are for guidance purposes only. All measurements are approximate are for general guidance purposes only and whilst every care has been taken to ensure their accuracy, they should not be relied upon and potential buyers are advised to recheck the measurements.