



22 Onyx Crescent, Leicester, LE4 9AH

£900 Per month

- Two bedroom apartment
- Modern kitchen
- Three-piece bathroom suite
- Highly popular location
- Available from June 2024
- Please contact Smooth to arrange your visit

Kitchen/diner

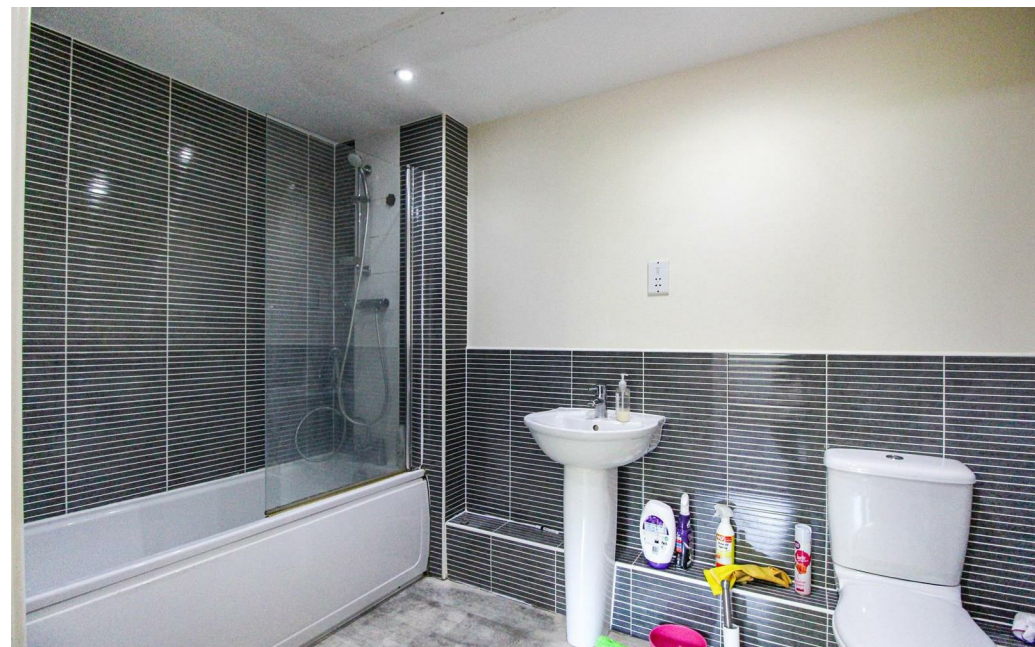
Bedroom one

Bedroom two

Bathroom



Modern two-bedroom apartment | Available
June 2024 | Highly popular location | Fitted
kitchen | Please contact Smooth to arrange your
visit



6 Grove Court, Leicester, Leicestershire, LE19 1SA

T: 0116 326 6262

E: hello@smoothonline.co

Agents Note: Whilst every care has been taken to prepare these sales particulars, they are for guidance purposes only. All measurements are approximate are for general guidance purposes only and whilst every care has been taken to ensure their accuracy, they should not be relied upon and potential buyers are advised to recheck the measurements.