



**Stanier Drive, Leicester, LE4 9JH**

**£1,200 Per month**

- Spacious three-bedroom home
- Off-road parking and garage
- Private rear garden
- Available to move in ASAP
- Recently re-painted throughout
- Spacious reception room
- En-suite to the master bedroom
- Three-piece bathroom
- Please contact Smooth to arrange your visit

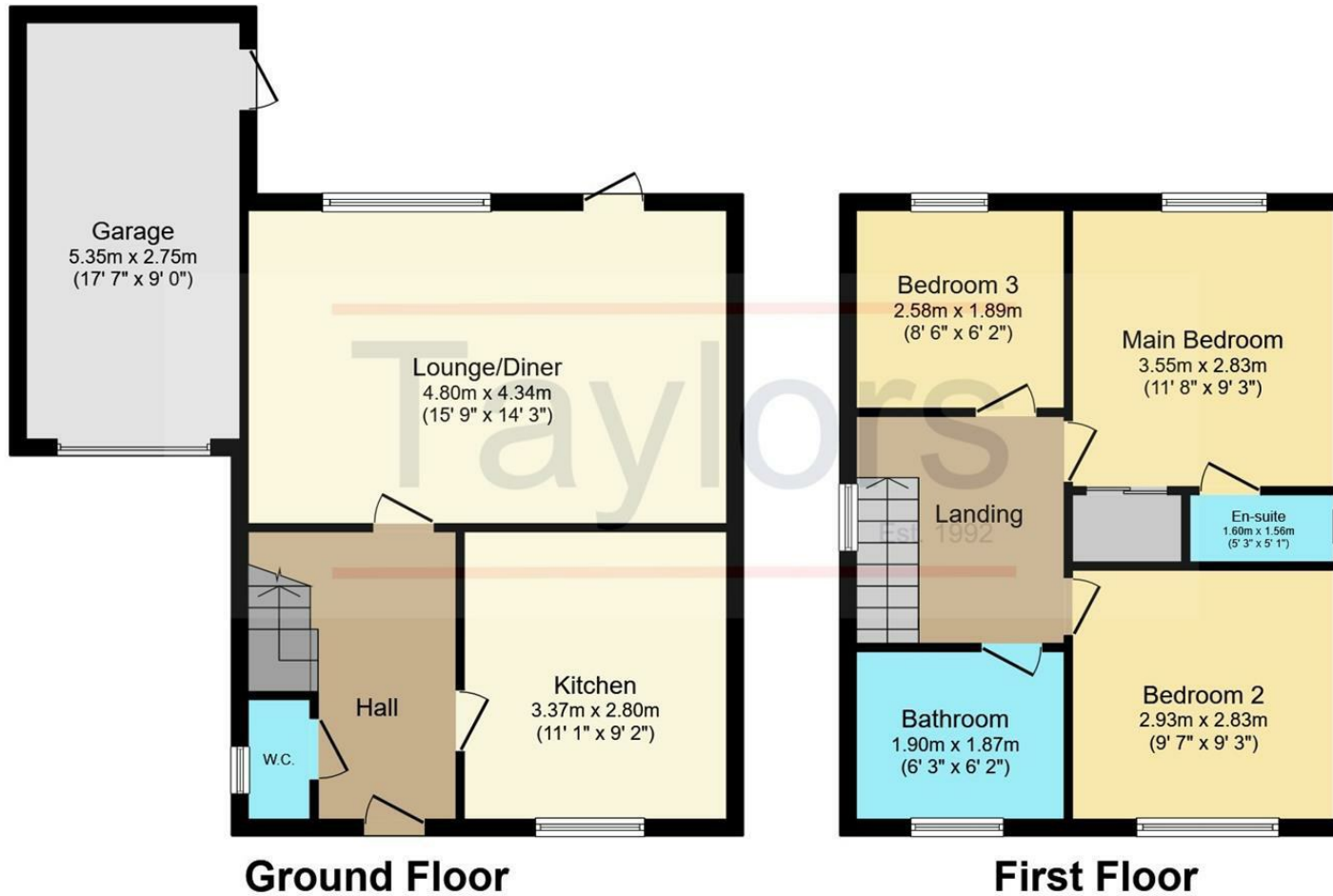
<b>Reception room</b>	15'8" x 14'2" (4.8 x 4.34)
<b>Kitchen</b>	11'0" x 9'2" (3.37 x 2.8)
<b>Downstairs WC</b>	6'0" x 2'8" (1.83 x 0.82)
<b>Master bedroom</b>	11'7" x 9'3" (3.55 x 2.83)
<b>Ensuite shower room</b>	5'2" x 5'1" (1.6 x 1.56)
<b>Bedroom two</b>	9'7" x 9'3" (2.93 x 2.83)
<b>Bedroom three</b>	8'5" x 5'6" (2.58 x 1.69)
<b>Bathroom</b>	6'2" x 6'1" (1.9 x 1.87)
<b>Garage</b>	17'6" x 9'0" (5.35 x 2.75)



Three-bedroom detached home | Recently re-decorated throughout | Spacious reception room | Downstairs WC | Ensuite shower room | Three-piece family bathroom | Off-road parking and garage







Total floor area 111.2 m<sup>2</sup> (1,197 sq.ft.) approx

This plan is for illustration purposes only and may not be representative of the property. Plan not to scale. Powered by PropertyBox

6 Grove Court, Leicester, Leicestershire, LE19 1SA

T: 0116 326 6262

E: [hello@smoothonline.co](mailto:hello@smoothonline.co)

Agents Note: Whilst every care has been taken to prepare these sales particulars, they are for guidance purposes only. All measurements are approximate and for general guidance purposes only and whilst every care has been taken to ensure their accuracy, they should not be relied upon and potential buyers are advised to recheck the measurements.