

Intento

ONE AND TWO BEDROOM APARTMENTS



THE
ARTISAN
COLLECTION

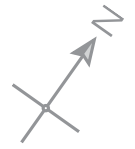


Modello
A development of new homes in Gateshead

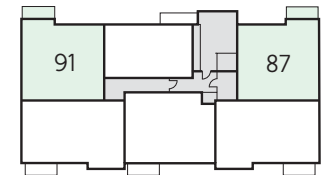
Bellway

Development layout

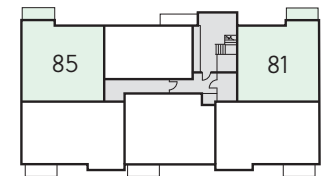




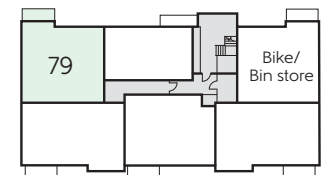
Third Floor



Second Floor



First Floor



Ground Floor

The Lewis – Plots 79, 85, 91 & 97

Kitchen/Living/Dining	2.89m x 8.48m	9'6" x 27'10"
Bedroom 1	2.83m x 4.30m	9'3" x 14'1"
Bedroom 1 En Suite	1.65m x 2.20m	5'5" x 7'3"
Bedroom 2	2.67m x 4.62m	8'9" x 15'2"
Bathroom	2.20m x 2.05m	7'3" x 6'9"
Total area	70.70 sq. m.	761 sq. ft.

The Lewis – Plots 81, 87 & 93

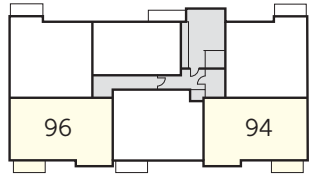
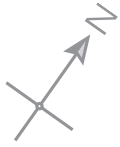
Kitchen/Living/Dining	2.89m x 8.48m	9'6" x 27'10"
Bedroom 1	2.83m x 4.30m	9'3" x 14'1"
Bedroom 1 En Suite	1.65m x 2.20m	5'5" x 7'3"
Bedroom 2	2.67m x 4.62m	8'9" x 15'2"
Bathroom	2.20m x 2.05m	7'3" x 6'9"
Total area	70.70 sq. m.	761 sq. ft.

WS - Wardrobe Space (suggestion only, wardrobe not included)

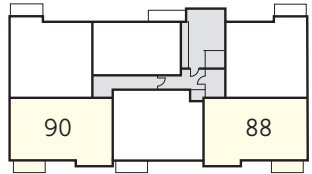
Furniture arrangements are for illustrative purposes only. Items are not included, nor to scale.

The items shown in this key may be subject to change, and positions could vary from those indicated on this floorplan. Please refer to Sales Advisor for details of your selected plot. External finishes and landscaping may vary. Please refer to Sales Advisor for further details. All dimensions are approximate and should not be used for carpet sizes, appliance spaces or furniture. We operate a policy of continuous improvement and individual features such as kitchen and bathroom layouts, doors, windows, garages and elevational treatments may vary from time to time. Consequently these particulars should be treated as general guidance only and do not constitute a contract, part of a contract or a warranty.

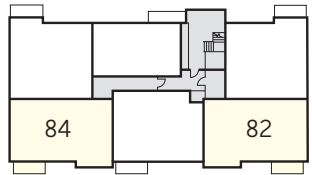
Floorplans



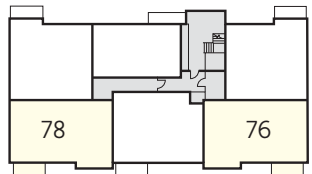
Third Floor



Second Floor



First Floor

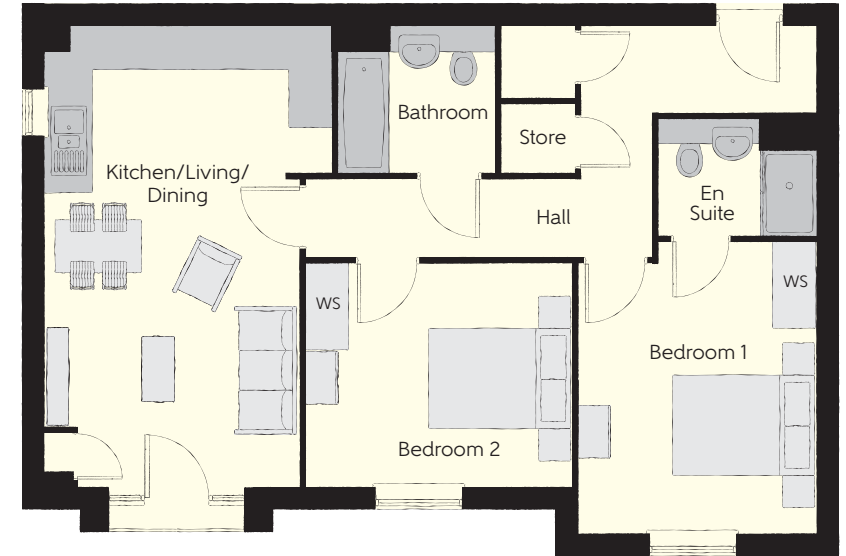


Ground Floor



The Filbert – Plots 76, 82, 88 & 94

Kitchen/Living/Dining	4.000m x 6.400m	13'1" x 21'0"
Bedroom 1	3.310m x 4.070m	10'10" x 13'4"
Bedroom 1 Ensuite	2.200m x 1.650m	7'3" x 5'5"
Bedroom 2	3.720m x 3.100m	12'2" x 10'2"
Bathroom	2.200m x 2.050m	7'3" x 6'9"
Total area	70.70 sq. m.	761 sq. ft.



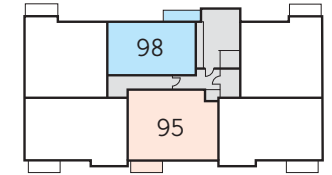
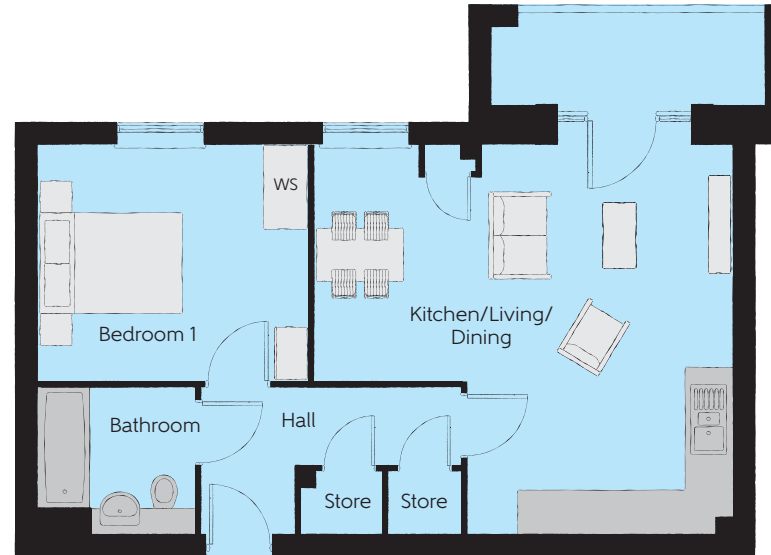
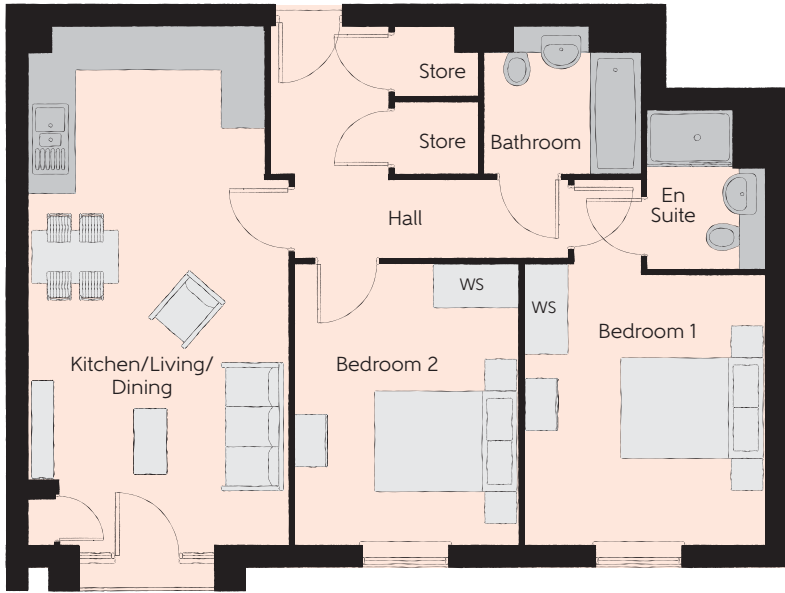
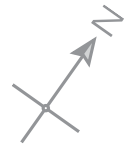
The Filbert – Plots 78, 84, 90 & 96

Kitchen/Living/Dining	4.000m x 6.400m	13'1" x 21'0"
Bedroom 1	3.310m x 4.070m	10'10" x 13'4"
Bedroom 1 Ensuite	2.200m x 1.650m	7'3" x 5'5"
Bedroom 2	3.720m x 3.100m	12'2" x 10'2"
Bathroom	2.200m x 2.050m	7'3" x 6'9"
Total area	70.70 sq. m.	761 sq. ft.

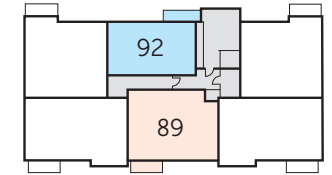
WS - Wardrobe Space (suggestion only, wardrobe not included)

Furniture arrangements are for illustrative purposes only. Items are not included, nor to scale.

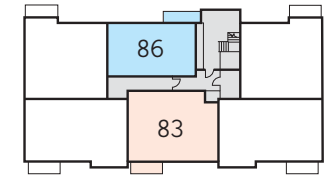
The items shown in this key may be subject to change, and positions could vary from those indicated on this floorplan. Please refer to Sales Advisor for details of your selected plot. External finishes and landscaping may vary. Please refer to Sales Advisor for further details. All dimensions are approximate and should not be used for carpet sizes, appliance spaces or furniture. We operate a policy of continuous improvement and individual features such as kitchen and bathroom layouts, doors, windows, garages and elevational treatments may vary from time to time. Consequently these particulars should be treated as general guidance only and do not constitute a contract, part of a contract or a warranty.



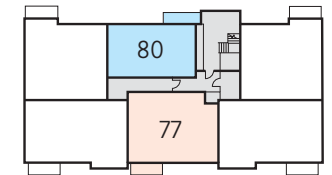
Third Floor



Second Floor



First Floor



Ground Floor

The Bouchard – Plots 77, 83, 89 & 95

Kitchen/Living/Dining	3.630m x 7.200m	11'11" x 23'7"
Bedroom 1	3.350m x 5.070m	11'0" x 16'8"
Bedroom 1 Ensuite	1.650m x 2.200m	5'5" x 7'3"
Bedroom 2	3.150m x 3.900m	10'4" x 12'9"
Bathroom	2.200m x 2.050m	7'3" x 6'9"
Total area	70.88 sq. m.	763 sq. ft.

The Auger – Plots 80, 86, 92 & 98

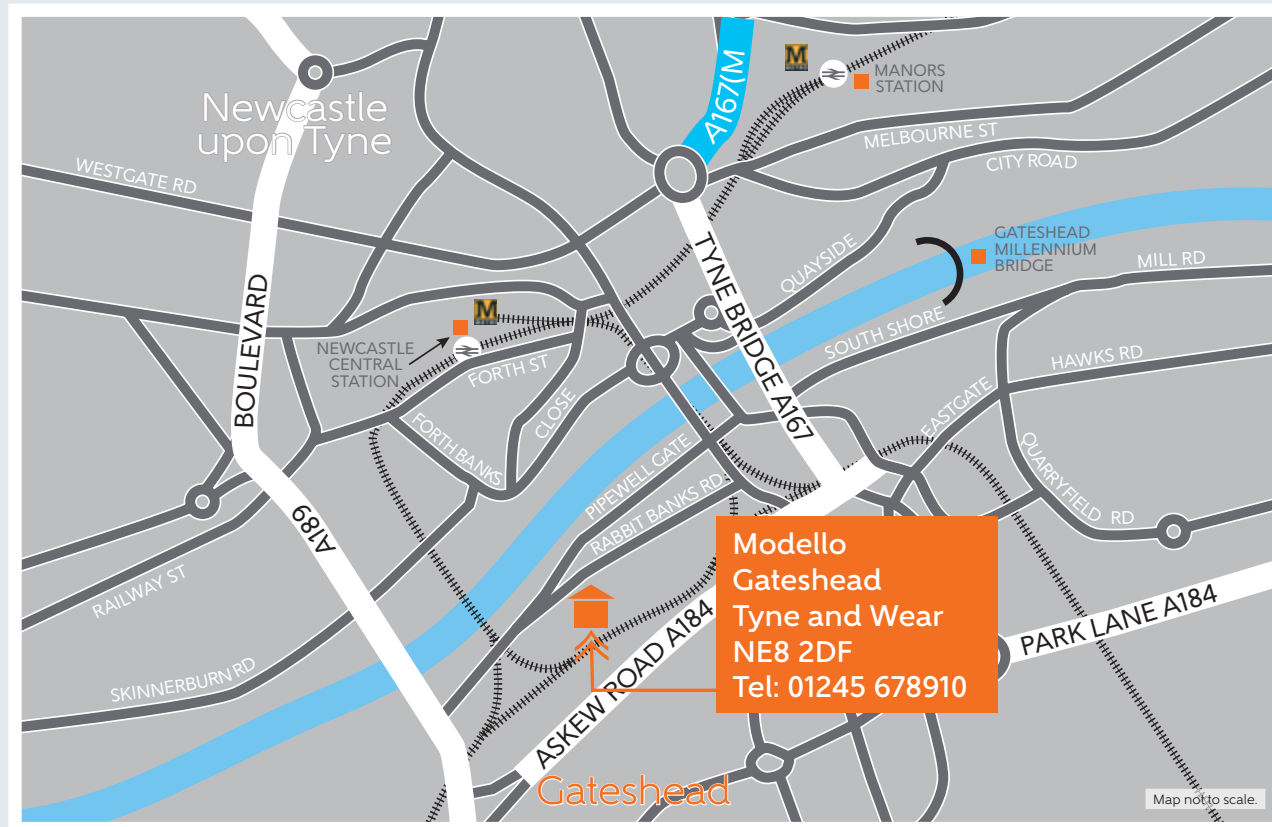
Kitchen/Living/Dining	5.830m x 5.420m	19'1" x 17'9"
Bedroom	3.780m x 3.300m	12'5" x 10'10"
Bathroom	2.200m x 2.050m	7'3" x 6'9"
Total area	70.88 sq. m.	763 sq. ft.

WS - Wardrobe Space (suggestion only, wardrobe not included)

Furniture arrangements are for illustrative purposes only. Items are not included, nor to scale.

The items shown in this key may be subject to change, and positions could vary from those indicated on this floorplan. Please refer to Sales Advisor for details of your selected plot. External finishes and landscaping may vary. Please refer to Sales Advisor for further details. All dimensions are approximate and should not be used for carpet sizes, appliance spaces or furniture. We operate a policy of continuous improvement and individual features such as kitchen and bathroom layouts, doors, windows, garages and elevational treatments may vary from time to time. Consequently these particulars should be treated as general guidance only and do not constitute a contract, part of a contract or a warranty.

How to find us



Bellway Homes Limited
Bellway House, Kings Park, Kingsway North, Gateshead, Tyne & Wear NE11 0JH
Telephone: 0191 482 8800 Fax: 0191 491 4537 bellway.co.uk

Bellway