



## Athelstan Road, Bitterne

SOUTHAMPTON, SO19 4DF - OFFERS IN EXCESS OF £375,000

enfields



# Athelstan Road

BITTERNE, SOUTHAMPTON, SO19 4DF

**Discover this stunning, fully refurbished three-bedroom semi-detached home on Athelstan Road, Bitterne. Boasting spacious living areas, a sunroom, off-road parking, and a scenic garden with River Itchen views. No forward chain.**

Nestled on Athelstan Road in the sought-after area of Bitterne, SO19 4DF, this charming three-bedroom semi-detached house offers a perfect blend of modern living and classic comfort. The property has been thoughtfully extended at the rear to create a spacious and welcoming home, ideal for families or those looking to upsize. Upon entering, you are greeted by a hallway that leads into a cosy lounge, seamlessly flowing into an open-plan dining room, perfect for entertaining guests or enjoying family meals. The sunroom at the rear provides a tranquil space to relax and enjoy the natural light, while the adjacent kitchen, also located at the rear, is equipped with contemporary fittings and fixtures, making it a delightful space for culinary enthusiasts.

The first floor features a landing leading to three well-proportioned bedrooms, offering ample space for relaxation and privacy. The second bedroom provides access to a terrace, where you can unwind and take in the serene views of the River Itchen. The modern three-piece bathroom suite adds a touch of luxury to the daily routine. Externally, the property benefits from off-road parking for multiple vehicles, leading to a garage, providing ample space for storage or additional parking. The rear garden, with its picturesque views of the River Itchen, offers a peaceful retreat for outdoor activities or simply enjoying the scenic surroundings.





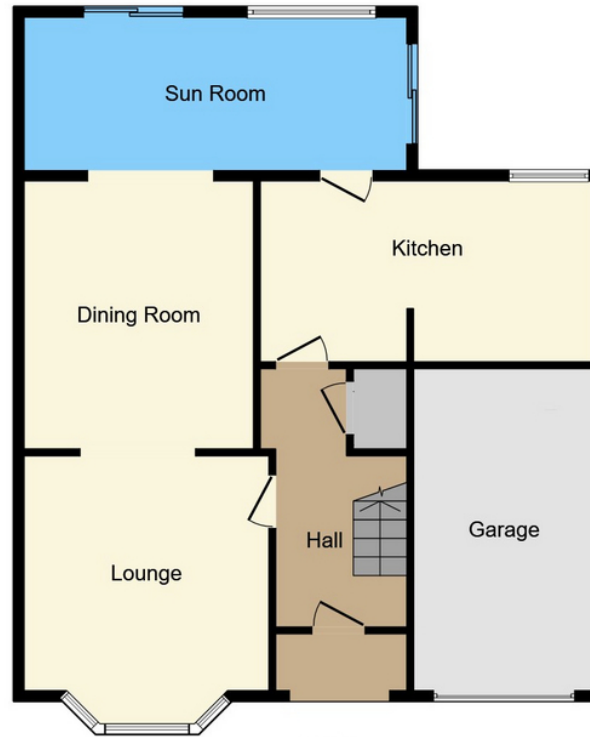


Bitterne is a vibrant community with excellent local amenities, including a variety of shops, restaurants, and cafes, all within easy reach. Families will appreciate the proximity to highly-regarded schools, ensuring quality education for children of all ages. For those who commute, the property is conveniently located near key transport links. The nearest train station provides regular services to Southampton and beyond, while the nearby motorway junction offers easy access to the M27, connecting you to the wider motorway network.

This fully refurbished property is offered with no forward chain, presenting a fantastic opportunity to move straight in and start enjoying your new home. With its blend of spacious living areas, modern amenities, and prime location, this house on Athelstan Road is a rare find and an ideal choice for those seeking a high-quality lifestyle in Bitterne.

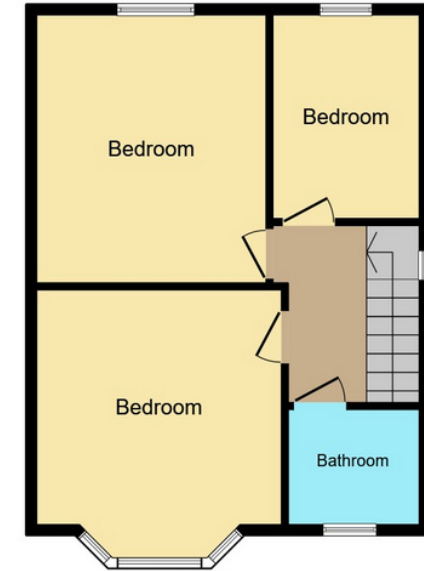
**Council Tax Authority:** Southampton City Council  
**Tenure:** Freehold  
**Energy Efficiency Rating:** D





### Ground Floor

Floor area 79.8 m<sup>2</sup> (859 sq.ft.)



### First Floor

Floor area 44.5 m<sup>2</sup> (479 sq.ft.)

**TOTAL: 124.3 m<sup>2</sup> (1,338 sq.ft.)**

This floor plan is for illustrative purposes only. It is not drawn to scale. Any measurements, floor areas (including any total floor area), openings and orientations are approximate. No details are guaranteed, they cannot be relied upon for any purpose and do not form any part of any agreement. No liability is taken for any error, omission or misstatement. A party must rely upon its own inspection(s). Powered by www.Propertybox.io



Enfields Southampton, 3 West End Road, Southampton, SO18 6TE  
 Tel: 02380 425 925 Email: sales@enfields-southampton.co.uk www.enfields-southampton.co.uk

**IMPORTANT NOTICE:** The details presented in these property particulars are believed to be precise, but they are intended to serve only as a general guide and must not be regarded as a formal offer or contractual agreement. Prospective buyers should not depend on these details as accurate statements or depictions of reality but should instead verify their correctness via their own inspections or other established means. We have not conducted an exhaustive survey, nor have we tested the utilities, appliances, or particular fixtures. Room dimensions must not be relied upon for carpeting and furnishing decisions. The measurements provided are estimated. No employee within Enfields has the power to make or offer any representation or guarantee about the property.

