



Alder Road, Aldermoor

SOUTHAMPTON, SO16 5EG - OFFERS IN EXCESS OF £240,000

enfields

# Alder Road

ALDERMOOR, SOUTHAMPTON, SO16 5EG

**This three-bedroom mid-terraced house on Alder Road, offers a lounge/diner, kitchen, and downstairs bathroom, with three upstairs bedrooms and rear garden. Close to Southampton General Hospital, schools, and excellent transport links. No chain.**

Nestled in the heart of Alder Moor, this three-bedroom mid-terraced house on Alder Road offers a superb opportunity for those looking to settle in a well-connected and vibrant community. With its inviting lounge/diner at the front of the property, this home provides a spacious and versatile living area perfect for both relaxation and entertaining. The kitchen, located at the rear, leads to a practical downstairs bathroom, adding convenience to the layout.

Upstairs, you will find three generously sized bedrooms, each providing ample space and potential for customisation to suit your personal tastes and needs. The enclosed rear garden is a delightful feature, offering a private outdoor space ideal for family activities, gardening, or simply unwinding in the fresh air. Additionally, the property is being sold with no forward chain, making it an attractive proposition for those eager to move quickly.

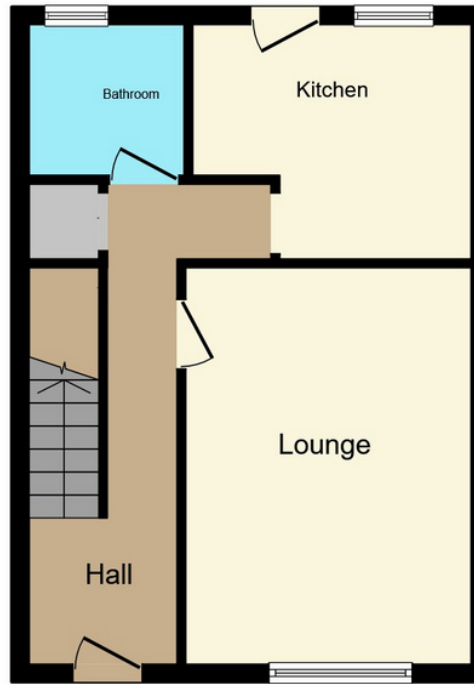




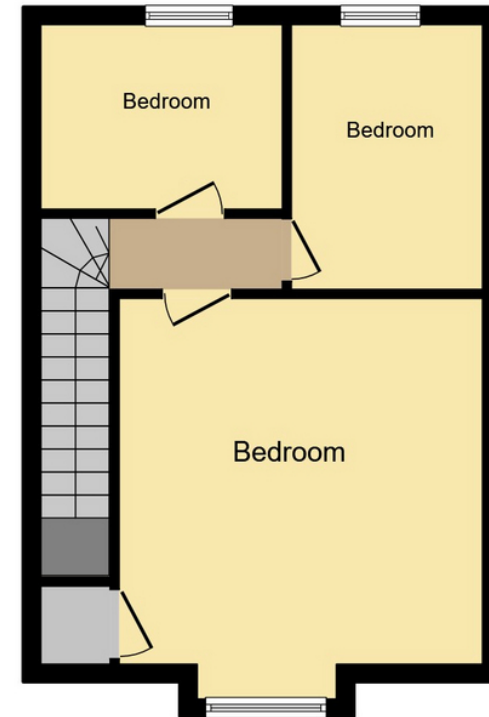
Aldermoor is well-served by a range of local amenities, ensuring that everyday necessities are within easy reach. The area boasts excellent schools, making it a desirable location for families. For those who commute or enjoy exploring the wider region, the property benefits from superb transport links. The nearest train station, Southampton Central, is conveniently accessible, providing regular services to London and other major destinations. The proximity to the M27 motorway junction offers straightforward road travel, connecting you to various parts of Hampshire and beyond. Additionally, the property is located not far from Southampton General Hospital, making it an ideal choice for healthcare professionals or those who wish to live close to medical facilities.

Living on Alder Road places you within a thriving community with a friendly atmosphere, making it a wonderful place to call home. Whether you are looking to settle down in a family-friendly environment or seeking a property with excellent connectivity and local amenities, this three-bedroom mid-terraced house presents a fantastic opportunity not to be missed.

**Council Tax Authority:** Southampton City Council  
**Tenure:** Freehold  
**Energy Efficiency Rating:** C



**Ground Floor**  
Floor area 37.3 m<sup>2</sup> (401 sq.ft.)



**First Floor**  
Floor area 37.9 m<sup>2</sup> (408 sq.ft.)

**TOTAL: 75.2 m<sup>2</sup> (810 sq.ft.)**

This floor plan is for illustrative purposes only. It is not drawn to scale. Any measurements, floor areas (including any total floor area), openings and orientations are approximate. No details are guaranteed, they cannot be relied upon for any purpose and do not form any part of any agreement. No liability is taken for any error, omission or misstatement. A party must rely upon its own inspection(s). Powered by www.Propertybox.io



Enfields Southampton, 3 West End Road, Southampton, SO18 6TE  
Tel: 02380 425 925 Email: sales@enfields-southampton.co.uk www.enfields-southampton.co.uk

**IMPORTANT NOTICE:** The details presented in these property particulars are believed to be precise, but they are intended to serve only as a general guide and must not be regarded as a formal offer or contractual agreement. Prospective buyers should not depend on these details as accurate statements or depictions of reality but should instead verify their correctness via their own inspections or other established means. We have not conducted an exhaustive survey, nor have we tested the utilities, appliances, or particular fixtures. Room dimensions must not be relied upon for carpeting and furnishing decisions. The measurements provided are estimated. No employee within Enfields has the power to make or offer any representation or guarantee about the property.

