



## Avenue Road, Southampton

SOUTHAMPTON, SO14 6TU - OFFERS IN EXCESS OF £270,000

enfields



# Avenue Road

SOUTHAMPTON, SO14 6TU

**For sale: 2/3 bed semi-detached at Avenue Road with high yield potential, £1,450 pcm HMO rental. Ideal for students/professionals near Southampton Uni and Royal South Hants Hospital. Versatile, no chain.**

Stepping into the market with remarkable investment and residential potential is Avenue Road, a 2/3 bedroom semi-detached house that promises a lucrative yield with a calendar rental of £1,450 per month. Perfectly positioned to attract a stream of professionals and students alike, this property is a stone's throw from the esteemed Southampton University and the esteemed Royal South Hants Hospital.



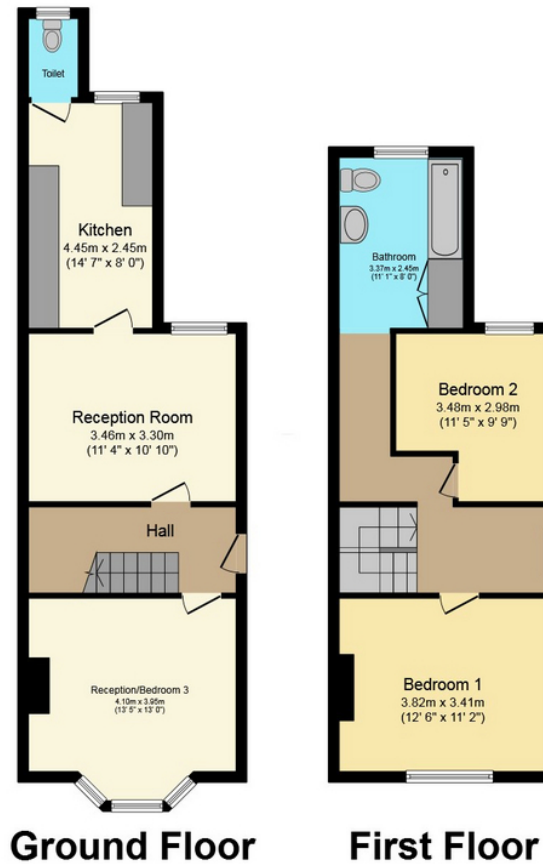
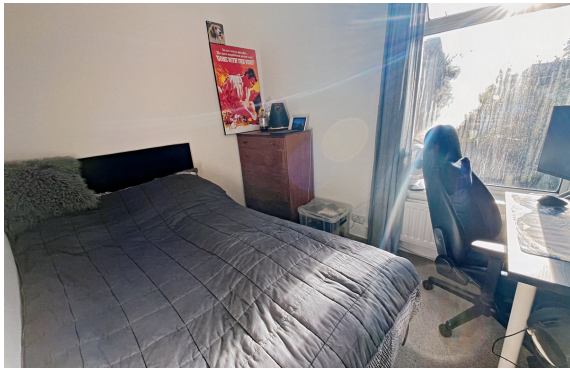




The residence offers a versatile layout that can readily adapt to the changing needs of its occupants, making it an attractive proposition for a variety of potential tenants. With such strategic proximity to top-tier educational and healthcare institutions, this property does not only assure a high tenancy rate but also holds the potential for substantial appreciation in a thriving neighbourhood. No forward chain.

**Council Tax Authority:** Southampton City Council  
**Tenure:** Freehold  
**Energy Efficiency Rating:** D





This plan is for illustration purposes only and may not be representative of the property. Plan not to scale. Powered by PropertyBox



Enfields Southampton, 3 West End Road, Southampton, SO18 6TE  
 Tel: 02380 425 925 Email: sales@enfields-southampton.co.uk www.enfields-southampton.co.uk

IMPORTANT NOTICE: The details presented in these property particulars are believed to be precise, but they are intended to serve only as a general guide and must not be regarded as a formal offer or contractual agreement. Prospective buyers should not depend on these details as accurate statements or depictions of reality but should instead verify their correctness via their own inspections or other established means. We have not conducted an exhaustive survey, nor have we tested the utilities, appliances, or particular fixtures. Room dimensions must not be relied upon for carpeting and furnishing decisions. The measurements provided are estimated. No employee within Enfields has the power to make or offer any representation or guarantee about the property.

