



Cedar Lodge

Southampton, SO16 4LE - £199,950

enfields

Cedar Lodge

Oakley Road, Regents Park,
Southampton, Hampshire, SO16 4LE

Charming 2-bedroom second floor apartment in Regents Park, with lounge/dining area, equipped kitchen, en-suite master, and private balcony. Conveniently located near amenities and transport, with allocated parking. No onward chain.

Two-bedroom Regents Park Apartment
En-suite to Master, Private Balcony
Allocated Parking, No Chain
Close to Amenities & General Hospital

A charming two-bedroom apartment, located on the second floor, proudly stands in the much sought-after residential neighbourhood of Regents Park, well known for its convenience to local facilities and excellent travel connections. This inviting property features a spacious lounge/dining area, a fully-equipped kitchen, two sizable bedrooms with an en-suite attached to the master bedroom, and a well-appointed three-piece bathroom suite. Additional highlights of the property include a private balcony, ideally perfect for unwinding on nice days, and an allocated parking space.





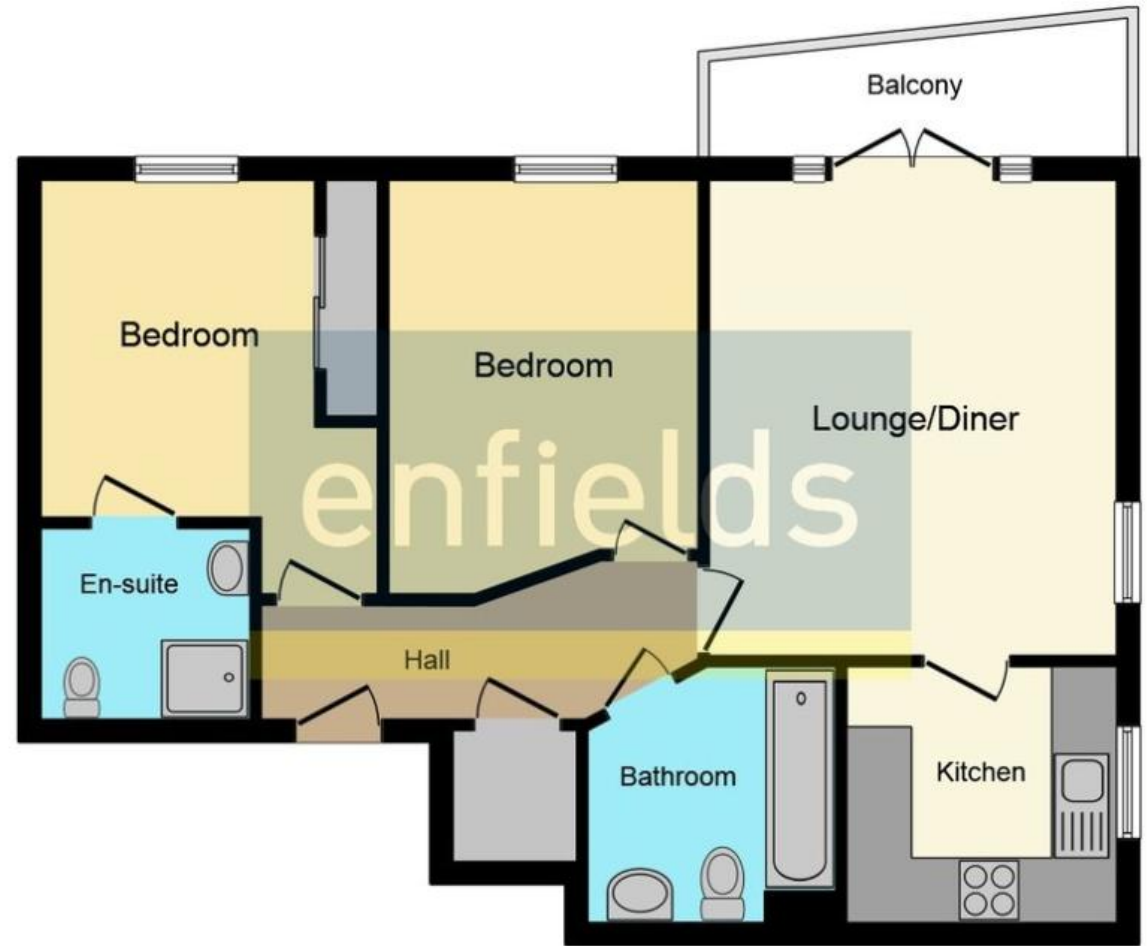
We strongly recommend an early viewing to truly appreciate the benefits and quality of this apartment. This property comes with no onward chain, meaning a potentially quicker transaction and move-in for prospective buyers. Its prime location adjacent to Cedar Lodge Park and its proximity to Southampton General Hospital make it an even more attractive proposition. Don't miss this chance to own your dream home in a prominent location.

Local Authority

Local Authority Council Name: Southampton City Council
Council Tax Band: B



Council Tax Authority: Southampton City Council
Tenure: Leasehold
Energy Efficiency Rating: C



Floor Plan

enfields

Enfields Southampton: 3 West End Road, Bitterne, Southampton, SO18 6TE
Tel: 023 8042 5925 Email: sales@enfields-southampton.co.uk www.enfields-southampton.co.uk

Disclaimer Property Details: These particulars, whilst believed to be accurate are set out as a general outline only for guidance and do not constitute any part of an offer or contract. Intending purchasers should not rely on them as statements or representation of fact but must satisfy themselves by inspection or otherwise as to their accuracy. We have not carried out a detailed survey nor tested the services, appliances, and specific fittings. Room sizes should not be relied upon for carpets and furnishings. The measurements given are approximate. No person in this companies' employment has the authority to make or give any representation or warranty in respect of the property.

