



Hesketh House, Cawte Road

SOUTHAMPTON, SO15 3SN - £42,000

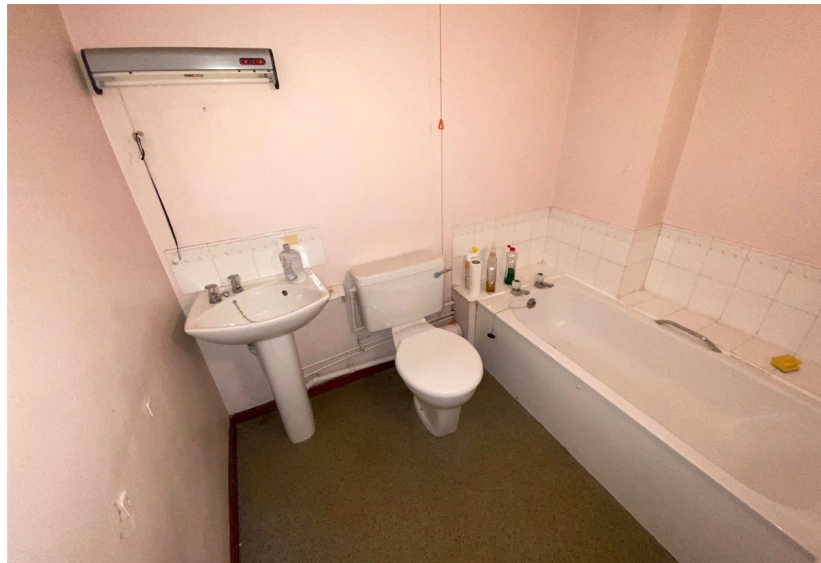
enfields

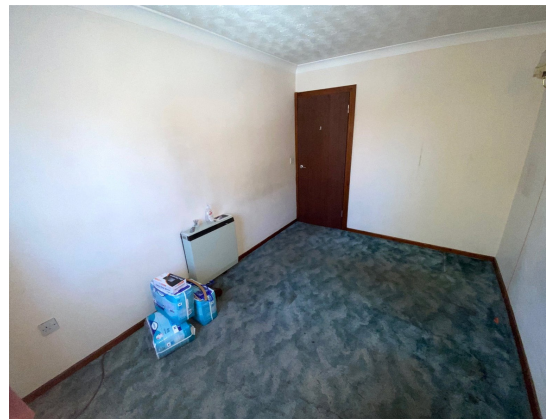
Hesketh House

CAWTE ROAD, SOUTHAMPTON, SO15 3SN

*****RETIREMENT PROPERTY-SHARED OWNERSHIP - 70% - CASH BUYERS ONLY***** Enfields are delighted to offer for sale this one bedroom first floor retirement apartment situated in the popular residential location of Shirley.

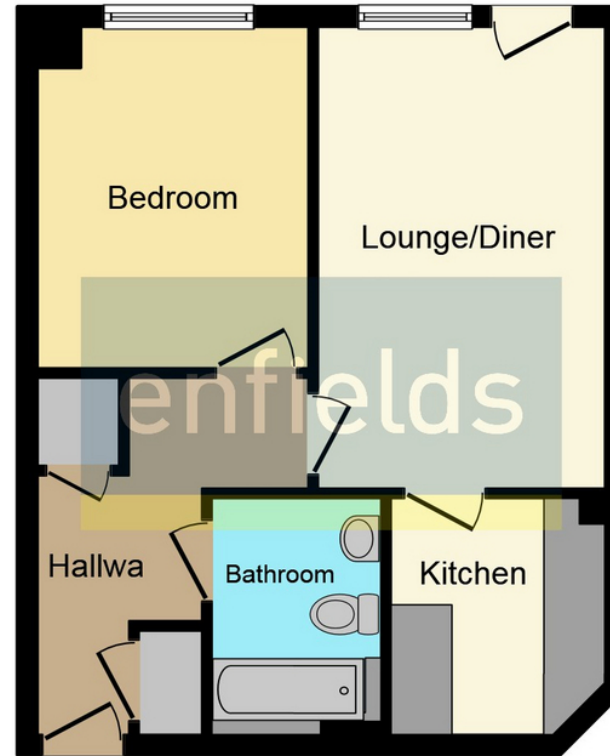
*****RETIREMENT PROPERTY-SHARED OWNERSHIP - 70% - CASH BUYERS ONLY***** Enfields are delighted to offer for sale this one bedroom first floor retirement apartment situated in the popular residential location of Shirley close to local amenities and good transport links. The property provides independent living for the over 55's and comprises lounge/diner, kitchen, one double bedroom and three piece bathroom suite.





The property also benefits from lift access, communal living area, communal parking and communal garden. The property is being offered for sale with no forward chain. An early internal inspection is highly recommended to appreciate the accommodation we have on offer. Price subject to a new RICS valuation.

Council Tax Authority: Southampton City Council
Tenure: Leasehold
Energy Efficiency Rating: B



Floor Plan

This plan is for illustration purposes only and may not be representative of the property. Plan not to scale.



Enfields Southampton, 3 West End Road, Southampton, SO18 6TE
Tel: 02380 425 925 Email: sales@enfields-southampton.co.uk www.enfields-southampton.co.uk

IMPORTANT NOTICE: The details presented in these property particulars are believed to be precise, but they are intended to serve only as a general guide and must not be regarded as a formal offer or contractual agreement. Prospective buyers should not depend on these details as accurate statements or depictions of reality but should instead verify their correctness via their own inspections or other established means. We have not conducted an exhaustive survey, nor have we tested the utilities, appliances, or particular fixtures. Room dimensions must not be relied upon for carpeting and furnishing decisions. The measurements provided are estimated. No employee within Enfields has the power to make or offer any representation or guarantee about the property.

