

# Avon Court

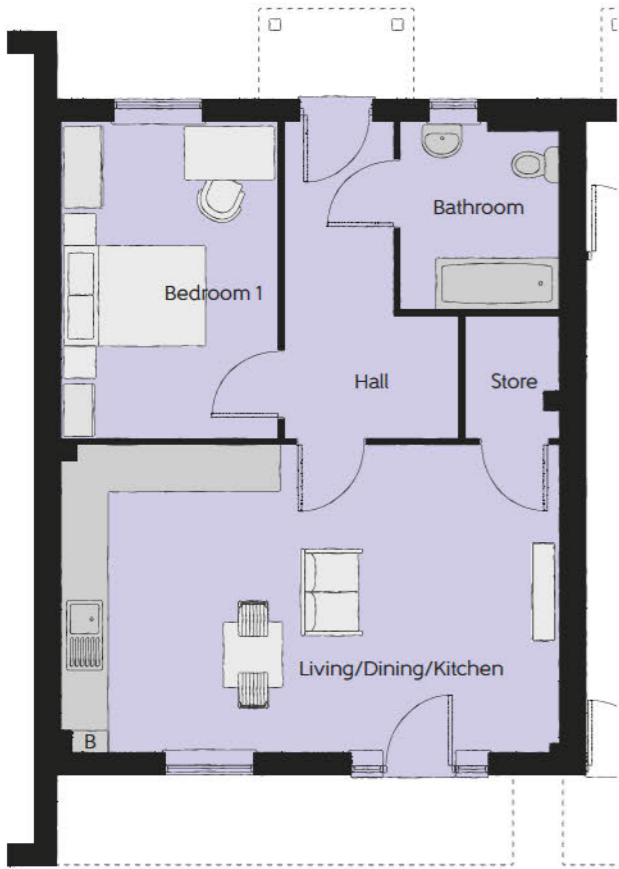
ONE AND TWO BEDROOM APARTMENTS  
PLOTS 12-21



[bellway.co.uk](https://bellway.co.uk)

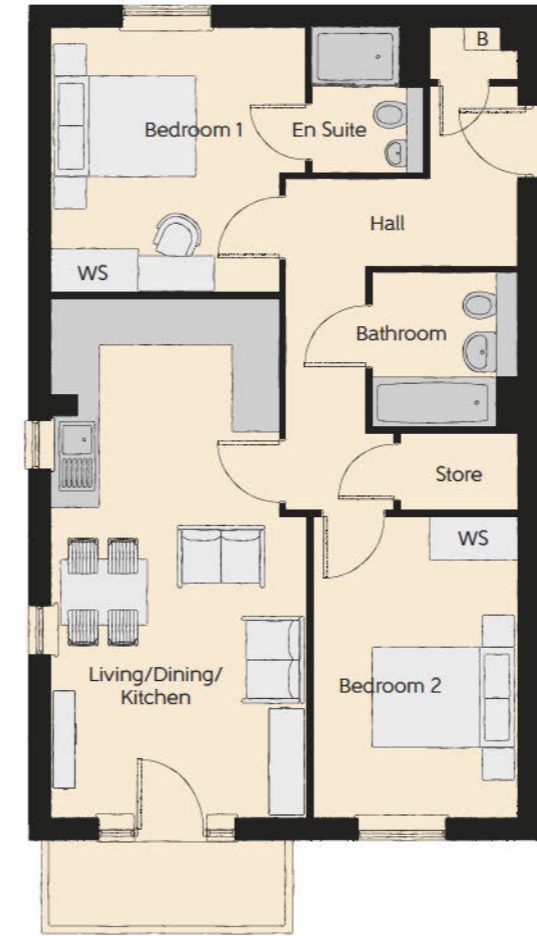
**Bellway**





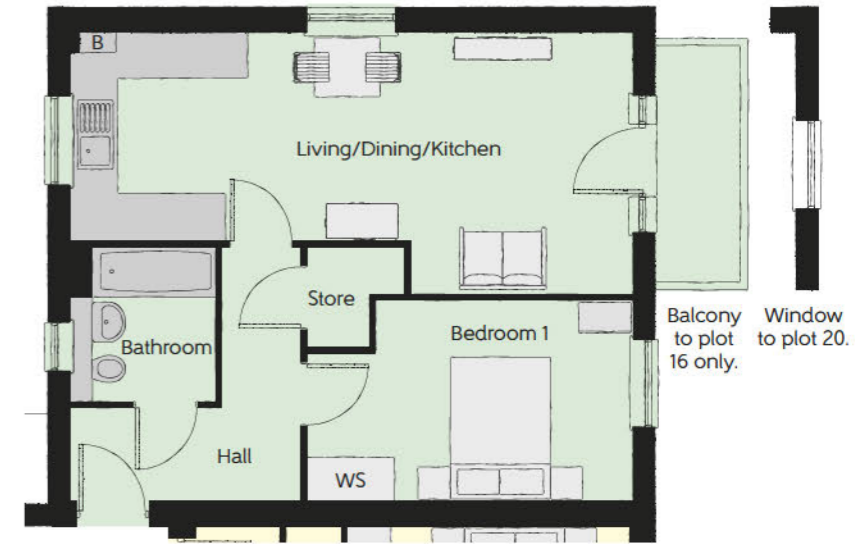
**The Ashford - Plot 12**

Living/Dining/ Kitchen Area	7.00m x 4.27m	23'0" x 14'0"
Bedroom 1	4.40m x 3.01m	14'4" x 9'9"
Bathroom	2.60m x 2.20m	8'5" x 7'2"



**The Falmouth - Plots 15 & 19**

Living/Dining/ Kitchen Area	7.20m x 3.54m	23'6" x 11'6"
Bedroom 1	3.66m x 3.53m	12'0" x 11'6"
Bedroom 2	4.17m x 2.83m	13'8" x 9'3"
Bathroom	2.15m x 2.00m	7'1" x 6'6"
En Suite	2.00m x 1.54m	6'6" x 5'1"

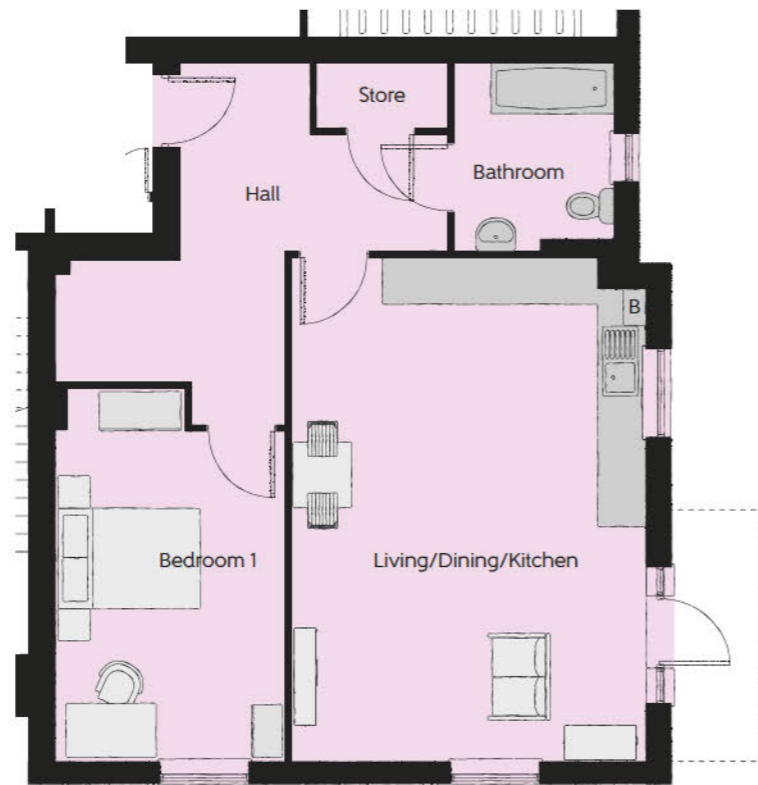


**The Garstand - Plots 16 & 20**

Living/Dining/ Kitchen Area	7.79m x 3.66m	25'6" x 12'0"
Bedroom 1	4.50m x 2.79m	14'8" x 9'2"
Bathroom	2.15m x 2.00m	7'1" x 6'6"

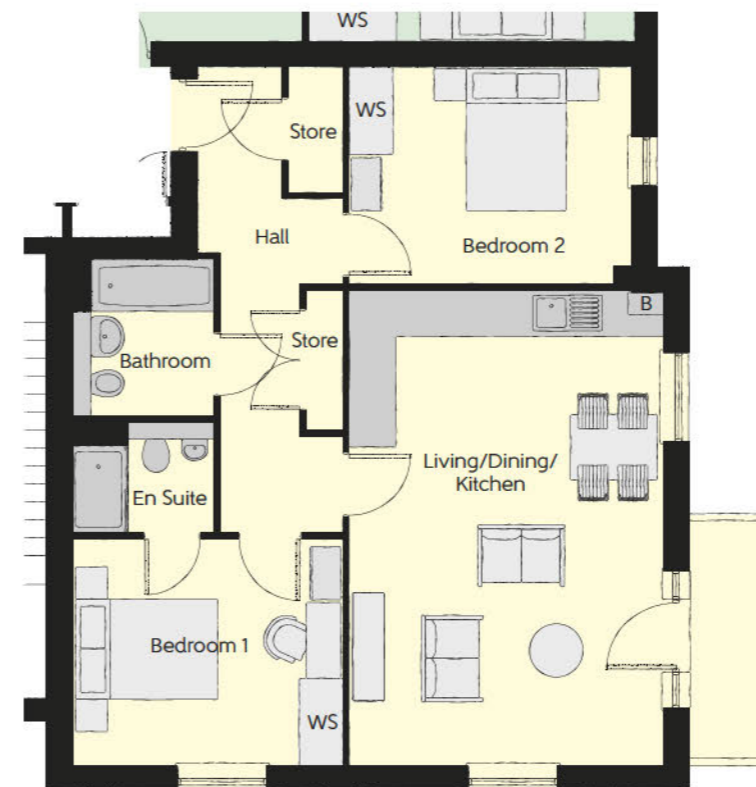
**The Chepstow - Plot 13**

Living/Dining/ Kitchen Area	7.00m x 4.96m	22'10" x 16'3"
Bedroom 1	5.17m x 3.23m	17'0" x 10'7"
Bathroom	2.60m x 2.24m	8'5" x 7'4"



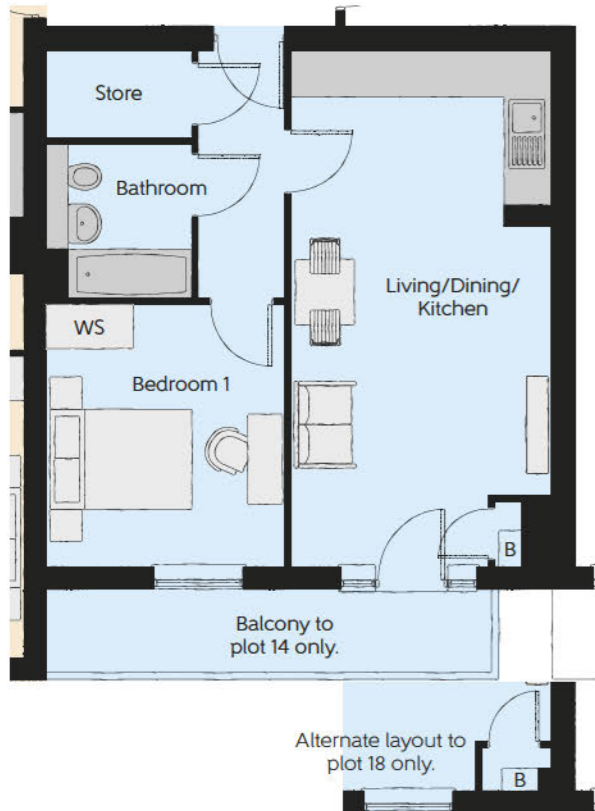
**The Dalton - Plots 14 & 18**

Living/Dining/ Kitchen Area	7.17m x 3.61m	23'5" x 11'8"
Bedroom 1	3.30m x 3.62m	10'8" x 11'9"
Bathroom	2.15m x 2.00m	7'1" x 6'6"



**The Hadleigh - Plots 17 & 21**

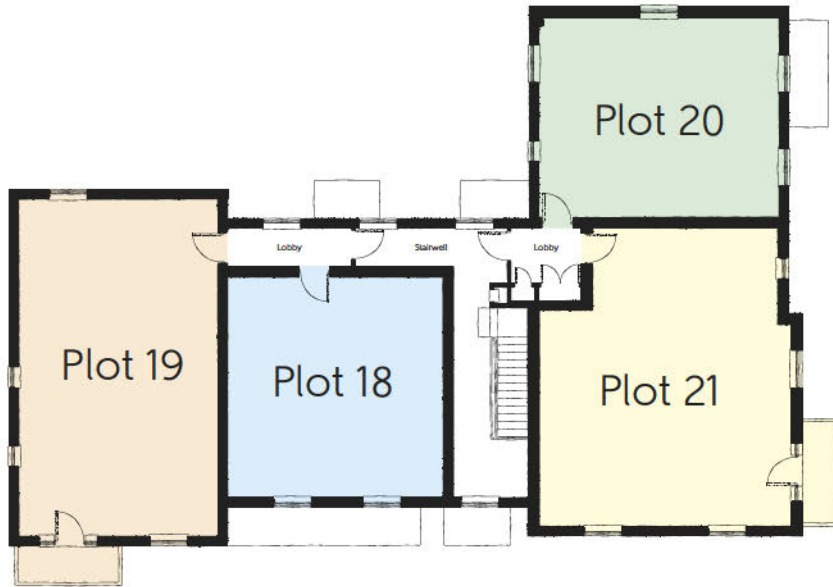
Living/Dining/ Kitchen Area	6.60m x 4.40m	21'7" x 14'4"
Bedroom 1	3.13m x 3.79m	10'3" x 12'4"
Bedroom 2	3.95m x 3.01m	12'10" x 9'9"
Bathroom	2.15m x 2.00m	7'1" x 6'6"
En Suite	2.00m x 1.54m	6'6" x 5'1"



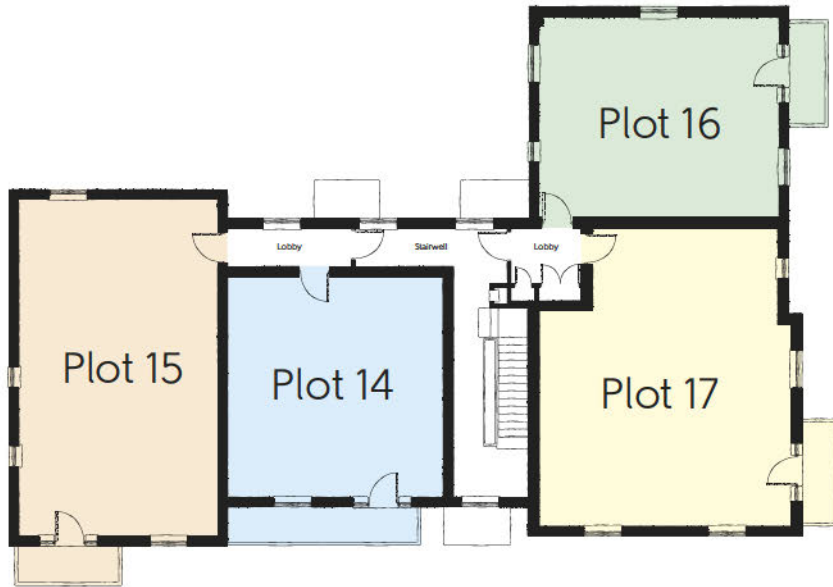
Alternate layout to plot 18 only.

WS - Wardrobe Space (suggestion only, wardrobe not included) B - Boiler

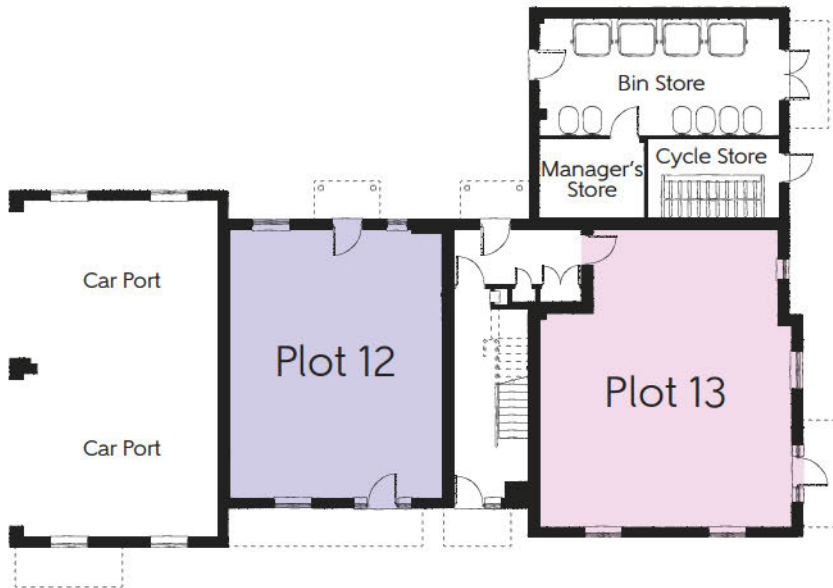
Some items shown in this key may be subject to change, and positions could vary from those indicated on this floorplan. Please refer to Sales Advisor for details of your selected plot. Computer generated image shown overleaf. External finishes, landscaping and configuration may vary from plot to plot. Please refer to Sales Advisor for further details. All dimensions are approximate and should not be used for carpet sizes, appliance spaces, or furniture. Furniture not to scale and all positions are indicative. Wardrobes are shown to suggest position only, and are not included as standard unless otherwise stated. We operate a policy of continuous improvement and individual features such as kitchen and bathroom layouts, doors, windows, garages and elevational treatments may vary from time to time. Consequently these particulars should be treated as general guidance only and do not constitute a contract, part of a contract or a warranty. 08/23 CHILSEYGRANGE



Second Floor



First Floor



Ground Floor  
Avon Court