

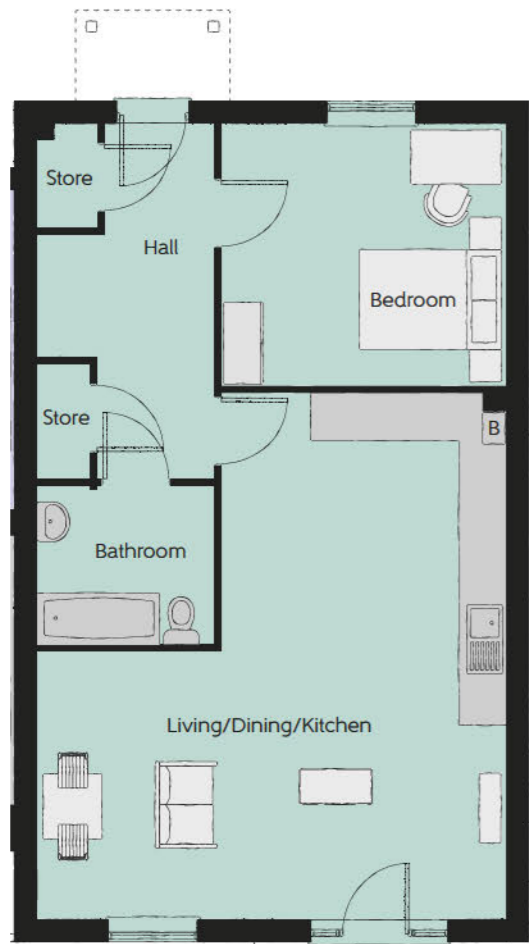
Eden House

ONE AND TWO BEDROOM APARTMENTS
PLOTS 57-69



bellway.co.uk

Bellway

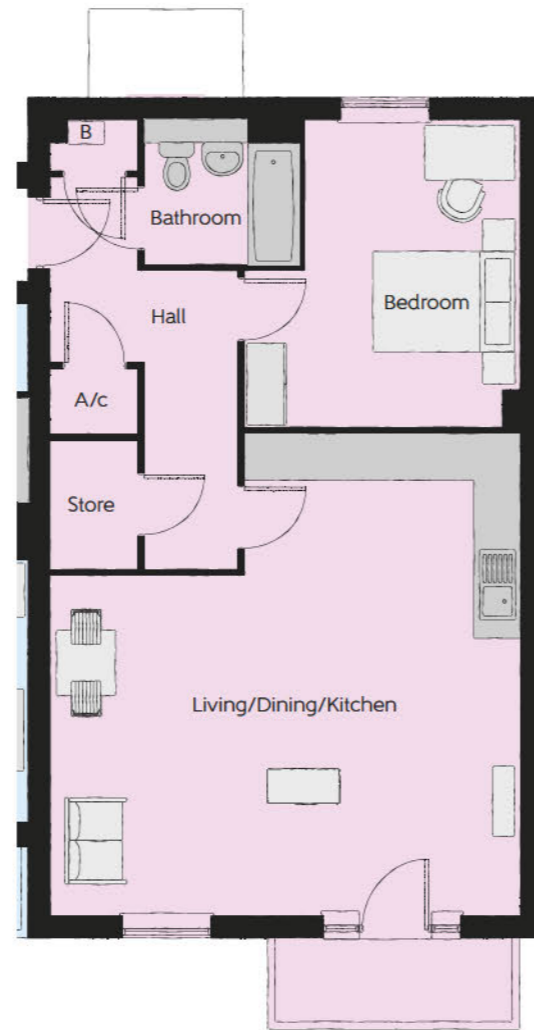


The Padstow - Plot 57

Living/Dining/ Kitchen Area	6.50m x 7.29m	21'4" x 23'11"
Bedroom	3.95m x 3.64m	13'0" x 11'11"
Bathroom	2.44m x 2.20m	8'0" x 7'3"

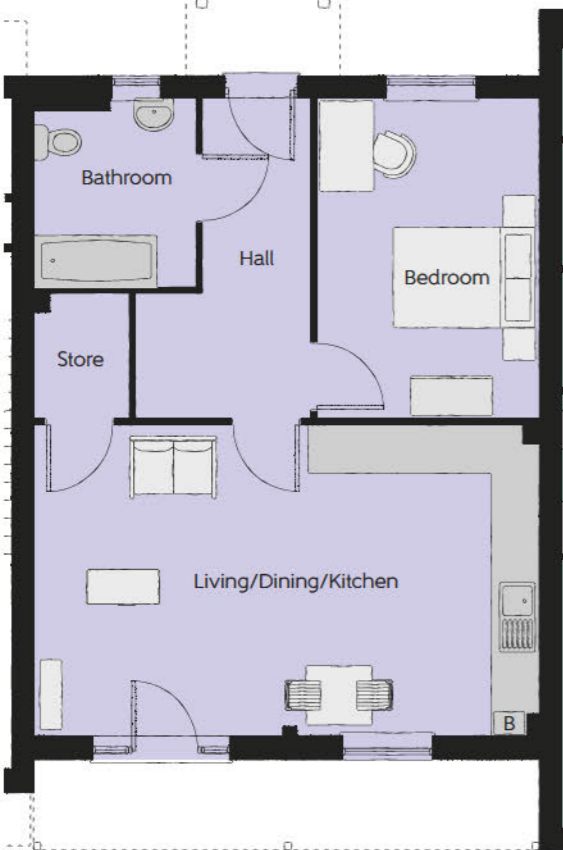
The Cohen - Plots 62 & 67

Living/Dining/ Kitchen Area	6.50m x 6.68m	21'4" x 21'11"
Bedroom	3.81m x 4.26m	12'6" x 14'0"
Bathroom	2.15m x 2.00m	7'1" x 6'7"



The Nash - Plot 58

Living/Dining/ Kitchen Area	7.00m x 4.31m	23'0" x 14'2"
Bedroom	3.07m x 4.44m	10'1" x 14'7"
Bathroom	2.24m x 2.61m	7'4" x 8'7"

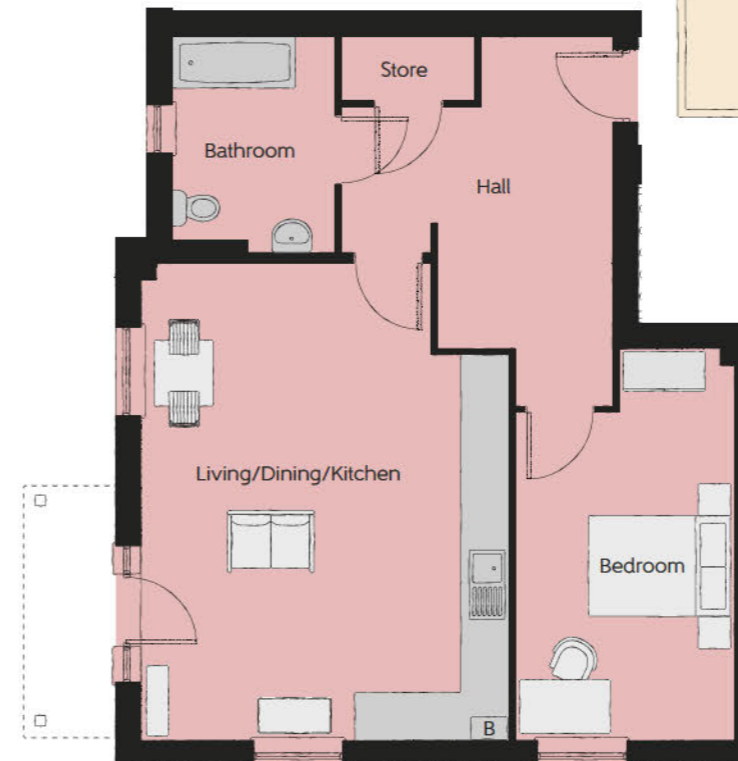


The Satch - Plots 59 & 64

Living/Dining/ Kitchen Area	3.77m x 7.20m	12'4" x 23'7"
Bedroom	2.76m x 4.76m	9'1" x 15'7"
Bathroom	2.00m x 2.14m	6'7" x 7'0"

The Whitlam - Plots 60 & 65

Living/Dining/ Kitchen Area	4.43m x 6.60m	14'6" x 21'8"
Bedroom 1	3.76m x 3.20m	12'4" x 10'6"
Bedroom 2	3.98m x 2.99m	13'1" x 9'10"
Bathroom	2.00m x 2.15m	6'7" x 7'1"



The Berwick - Plot 69

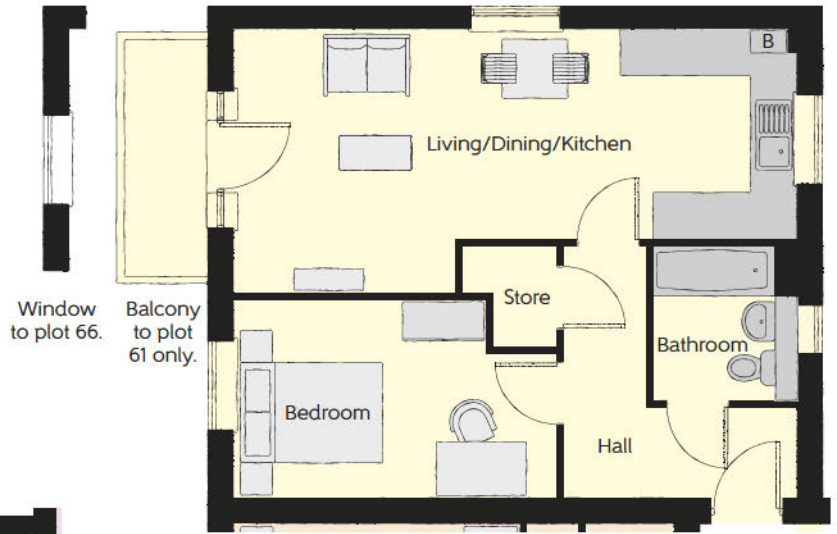
Living/Dining/ Kitchen Area	5.13m x 6.60m	16'10" x 21'8"
Bedroom 1	5.45m x 3.05m	17'11" x 10'0"
Bathroom	2.99m x 2.24m	9'10" x 7'4"

WS - Wardrobe Space (suggestion only, wardrobe not included) B - Boiler

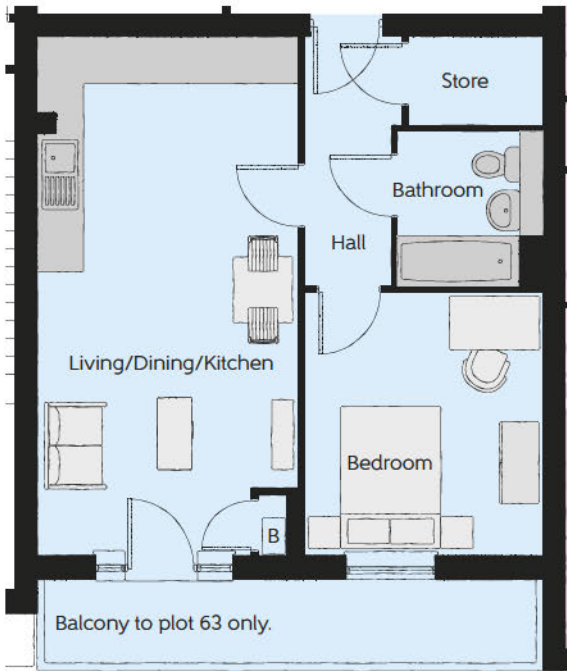
Some items shown in this key may be subject to change, and positions could vary from those indicated on this floorplan. Please refer to Sales Advisor for details of your selected plot. Computer generated image shown overleaf. External finishes, landscaping and configuration may vary from plot to plot. Please refer to Sales Advisor for further details. All dimensions are approximate and should not be used for carpet sizes, appliance spaces, or furniture. Furniture not to scale and all positions are indicative. Wardrobes are shown to suggest position only, and are not included as standard unless otherwise stated. We operate a policy of continuous improvement and individual features such as kitchen and bathroom layouts, doors, windows, garages and elevational treatments may vary from time to time. Consequently these particulars should be treated as general guidance only and do not constitute a contract, part of a contract or a warranty. 08/23 CHILSEYGRANGE

The Stanning – Plots 61 & 66

Living/Dining/ Kitchen Area	7.82m x 3.65m	25'8" x 12'0"
Bedroom	4.49m x 2.75m	14'9" x 9'0"
Bathroom	2.00m x 2.15m	6'7" x 7'1"

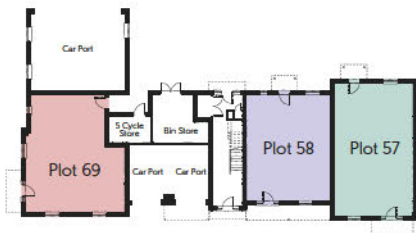


Window to plot 66.
Balcony to plot 61 only.



The Chambers – Plots 63 & 68

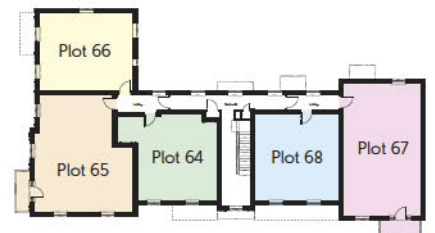
Living/Dining/ Kitchen Area	3.61m x 7.20m	11'10" x 23'7"
Bedroom	3.29m x 3.65m	10'10" x 12'0"
Bathroom	2.00m x 2.15m	6'7" x 7'1"



Ground Floor
Eden House



First Floor



Second Floor