



RIDGE | HOUSE

## Ridge House, 14 Ridgewell Hill, Wootton, Bridgnorth, Shropshire, WV15 6EF

A luxury detached family home with panoramic views of the stunning Shropshire countryside. Ridge House provides well-proportioned, stylish and versatile accommodation over two floors. The property interior has been fully designed and actioned by Jacksons Studios interior designers based in Stourbridge and is a triumph of contemporary design yet at the forefront of meeting the needs of modern family living.





The contemporary design does not end with the interior the gardens are a major focus. Fully landscaped with a large porcelain patio, a wealth of planting, porcelain water feature, aluminium pergola with louvered roof and drop sides and heater, power sockets and LED lighting. The garden also has Alexa/smart powered LED lighting throughout including the water feature.

## RIDGE HOUSE



Ground floor accommodation - Reception Hall, simply stunning Dining Hall, having bifold doors to the garden, Lounge also having bifold doors Log burner with granite surround, Study ideal for working from home space, guest cloakroom, contemporary open plan Kitchen Breakfast room having French doors to the rear garden.

## RIDGE | HOUSE



The kitchen is appointed to a very high standard and benefits from integrated appliances with a beautiful, feature island unit, ceramic floor tiles complete the look. Utility with a continuation of the ceramic floor tiles and units.









## RIDGE | HOUSE

First floor accommodation - Principal bedroom with ensuite, dressing room and French doors to balcony. Bedroom two with ensuite, built in wardrobes and Juliet balcony. Bedroom three with built in wardrobe and ensuite. Bedroom four is another double bedroom. Bedroom five has been fully fitted with wardrobes and cupboards and is currently used as a dressing room. Family bathroom.

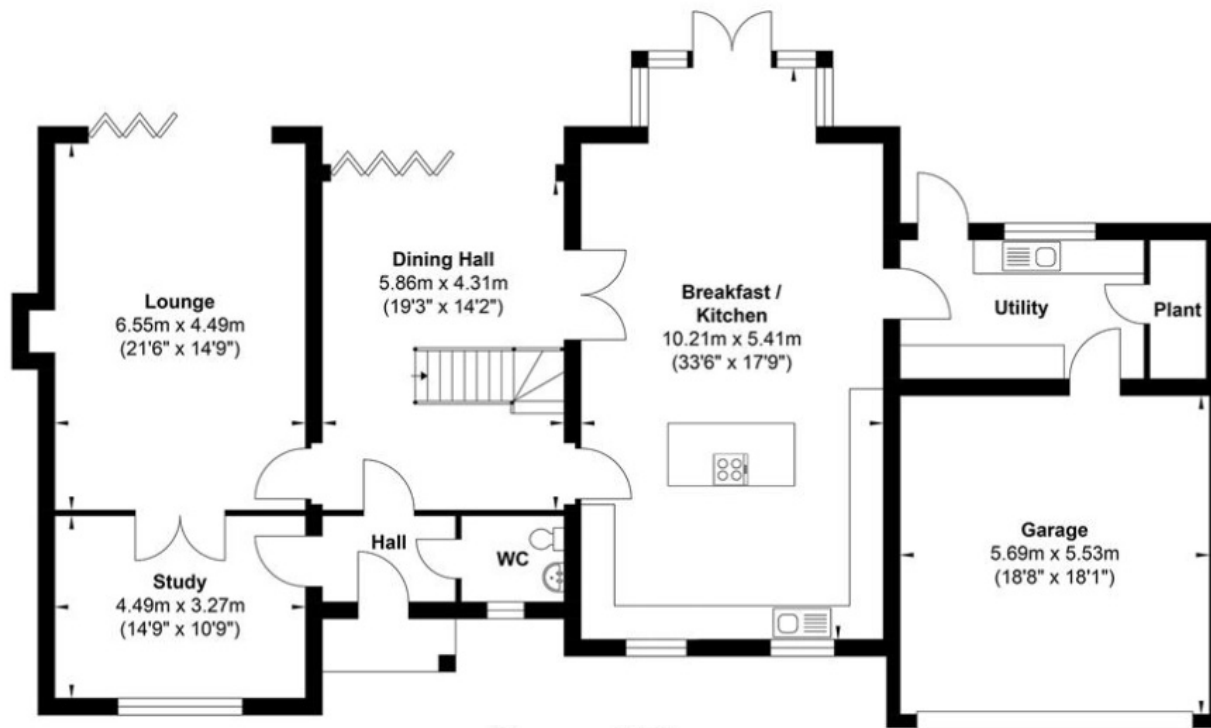
## RIDGE | HOUSE



Outside - Double garage and extended blocked paved driveway with ample parking for several vehicles, double gates give access to the rear garden. Professionally landscaped gardens including large porcelain patio, with rendered retaining wall with a wealth of specimen planting, water feature with fountain, aluminium pergola with heat, power and lighting, smart mood lighting, large gabion baskets with specimen silver birch trees.

Situated only four miles from the historic market town of Bridgnorth with its wealth of facilities including supermarkets, individual shops, a large variety of restaurants, public houses and cafes. The town also caters for education for all age groups. There is also a medical centre and hospital.



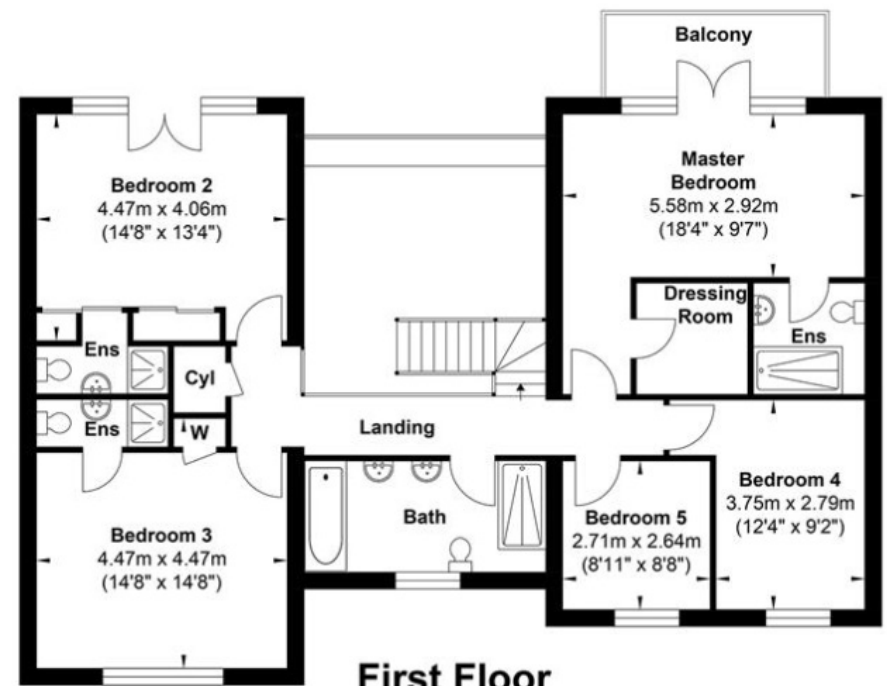


**Ground Floor**

**Gross Internal Floor Area : 290.35 m2 ... 3125.3 ft2**

Whilst every attempt has been made to ensure the accuracy of the floor plan contained here, measurements of doors, windows, rooms and any other items are approximate and no responsibility is taken for any error, omission, or mis-statement. This plan is for illustrative purposes only and should be used as such by any prospective purchaser. The services, systems and appliances shown have not been tested and no guarantee as to their operability or efficiency can be given.

Score	Energy rating	Current	Potential
92+	<b>A</b>		
81-91	<b>B</b>		90 <b>B</b>
69-80	<b>C</b>	75 <b>C</b>	
55-68	<b>D</b>		
39-54	<b>E</b>		
21-38	<b>F</b>		
1-20	<b>G</b>		



**First Floor**



## RIDGE | HOUSE

Ridge House, 14 Ridgewell Hill, Wootton, Bridgnorth, Shropshire, WV15 6EF

# HANSON PARTNERS

[Info@hansonpartners.com](mailto:Info@hansonpartners.com)  
+44 (0) 20 3633 1819

London office – 33 St James's Square, Mayfair, SW1Y 4JS  
Birmingham Office - 103 Colmore Row, B3 3AG