

Key Features

Built-in energy efficiency with luxurious underfloor heating.

Fibre optic cable to this home to enable super fast broadband.

Integrated kitchen appliances included: Black, glass fronted double oven, gas hob on a glass base and extractor hood.

Glass balustrade to landing with light oak stained wooden handrail and newels.

Beautiful ceramic wall tiling to kitchen, bathroom and en-suite.

Space saving built-in wardrobes with oak effect sliding mirror doors to all bedrooms.

Contemporary wall hung vanity units and chrome heated towel rail in bathroom and en-suite.

Elongated, low level shower tray with a thermostatic pressurised shower and sliding glass door in the en-suite.

Vinyl flooring to kitchen/dining area, bathroom, en-suite and cloakroom.

For full details of our specification, please refer to our website:

<https://www.norfolkhomes.co.uk/homes-and-locations/church-mead-brundall/specification>



The Penrose

2 bedroom home

CHURCH MEAD
BRUNDALL



Church Mead, Brundall

Berryfields, off Yarmouth Road,
Brundall, Norfolk NR13 5QE.

Telephone: 01603 964011

Email: churchmead@norfolkhomes.co.uk

www.norfolkhomes.co.uk

IMPORTANT:

These sales particulars are intended to give customers a good overview of our homes details. As we update and improve our designs continuously, it may mean that some amendments have been made since the brochure was published.

PLEASE ASK OUR SALES OFFICE MANAGER FOR A COPY OF THE VERY LATEST PLAN(S) OR VISIT OUR WEBSITE www.norfolkhomes.co.uk

A member of



Norfolk Homes

The Penrose



Ground Floor



First Floor

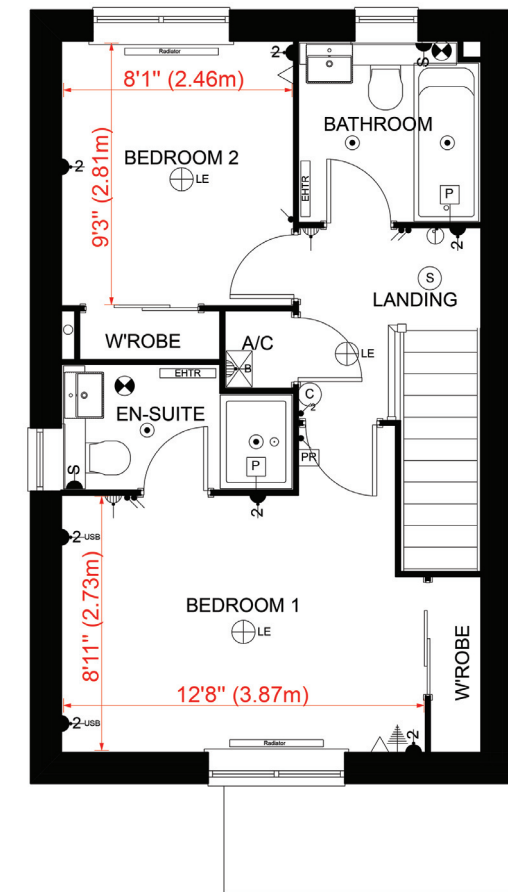
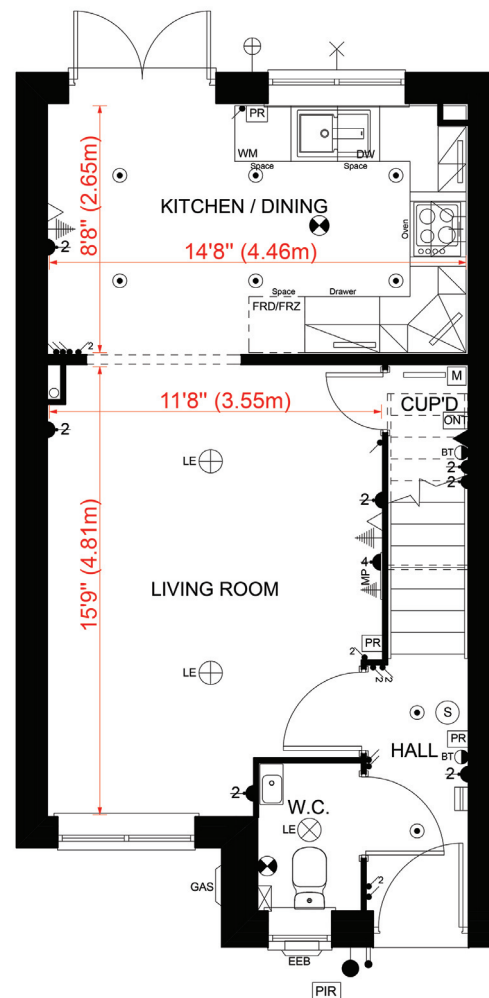
Plots 84, 86, 87, 90, 93, 125, 131, 132, 153 & 154

2 bedroom semi-detached (plots 84, 125, 131 & 132) and end terrace (plots 90, 93 & 153) and mid terrace (plots 86, 87 & 154).
769 sq.ft (71.4 sq.m.)

Car Parking

All plots
2 parking spaces

For precise garage dimensions - please ask our Sales Office Manager.



Floor Plans Approximate dimensions (+/- 50 mm).