

Key Features

Built-in energy efficiency with luxurious underfloor heating.

Fibre optic cable to this home to enable super fast broadband.

Integrated kitchen appliances includes: 'Tower style', black glass fronted double oven, gas hob, extractor hood, fridge/freezer and dishwasher.

Beautiful ceramic wall tiling to kitchen, bathroom and en-suite.

Bedroom 2 has direct access to the family bathroom to provide a further en-suite facility.

Contemporary wall hung vanity units and chrome heated towel rail in bathroom and en-suite.

Galleried landing with glass balustrades, light oak stained wooden handrail and newels.

Space saving built-in wardrobes with oak effect sliding mirror doors to all bedrooms.

Elongated, low level shower tray with a thermostatic pressurised shower and sliding glass door in the en-suite.

For full details of our specification, please refer to our website:
<https://www.norfolkhomes.co.uk/homes-and-locations/churchmead-brundall/specification>



The Flanagan

3 bedroom home

CHURCH MEAD
BRUNDALL



Church Mead, Brundall

Berryfields, off Yarmouth Road,
Brundall, Norfolk NR13 5QE.

Telephone: 01603 964011

Email: churchmead@norfolkhomes.co.uk

www.norfolkhomes.co.uk

IMPORTANT:

These sales particulars are intended to give customers a good overview of our homes details. As we update and improve our designs continuously, it may mean that some amendments have been made since the brochure was published.

PLEASE ASK OUR SALES OFFICE MANAGER FOR A COPY OF THE VERY LATEST PLAN(S) OR VISIT OUR WEBSITE www.norfolkhomes.co.uk



Norfolk Homes

The Flanagan



Ground Floor



First Floor

Plots 33, 36, 60, 77, 89, 94,
108, 109, 127 and 129

3 bedroom detached house
and garage.

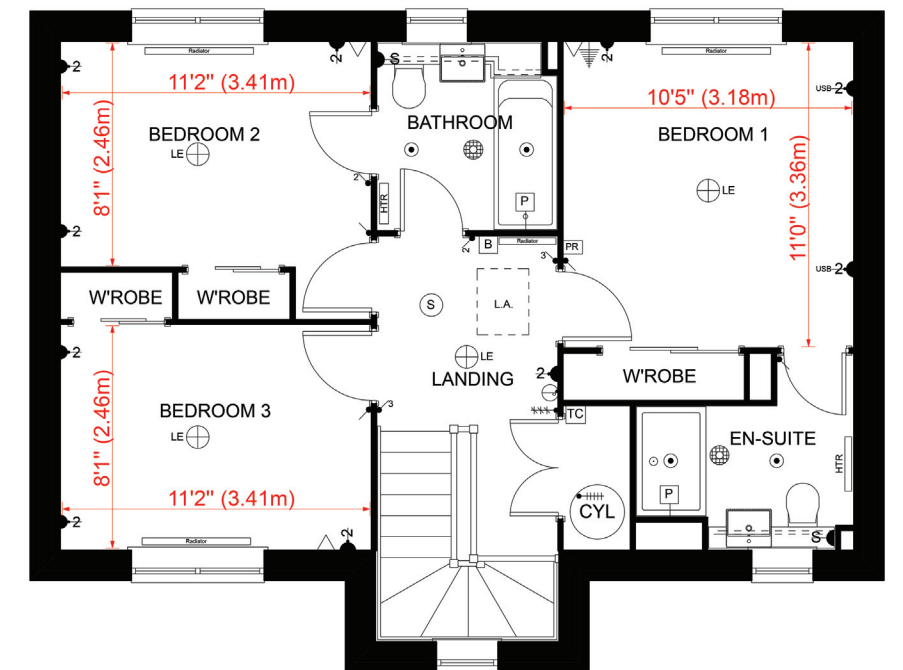
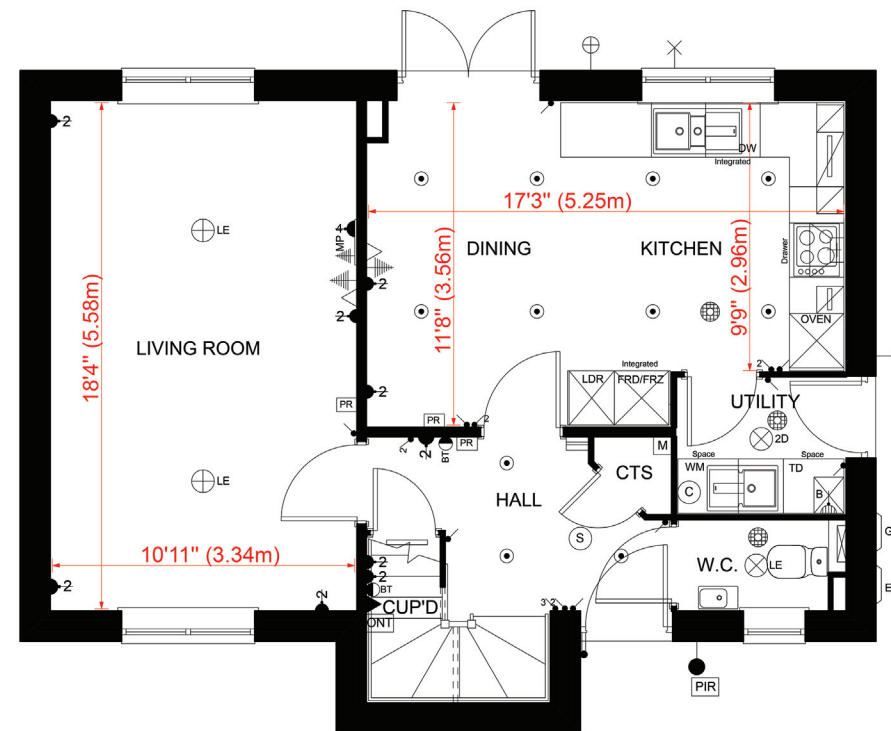
1111 sq.ft (103.2 sq.m.)

Car Parking

All plots

2 parking spaces & garage

For precise garage dimensions -
please ask our Sales Office Manager.



Floor Plans Approximate dimensions (+/- 50 mm).

All computer generated Images shown are not plot specific.

Please arrange a viewing with the Sales Manager to establish individual plot details and finishes, also please refer to details of sale check list provided at point of reservation.