

## Key Features

Built-in energy efficiency with luxurious underfloor heating.

Home office or 4th bedroom on ground floor adjacent to shower room.

Fibre optic cable to this home to enable super fast broadband.

Fully glazed entrance hall with vaulted ceiling.

Corner window to bedroom 1.

Integrated dishwasher and fridge/freezer.

LED recessed downlights to hall, kitchen/dining area, bathroom and en-suite.

Ceramic floor tiles to entrance hall, kitchen/dining area, utility and ground floor shower room.

Separate shower cubicle to bathroom.

Chrome heated towel rails to bathroom and en-suite.

Space saving built-in wardrobes with oak effect sliding mirror fronted doors to all bedrooms.

**For full details of our specification, please refer to our website:**

<https://www.norfolkhomes.co.uk/homes-and-locations/churchmead-brundall/home-styles/gentry>



# The Gentry

3 bedroom home

CHURCH MEAD  
BRUNDALL



### Church Mead, Brundall

Berryfields, off Yarmouth Road,  
Brundall, Norfolk NR13 5QE.

Telephone: 01603 964011

Email: [churchmead@norfolkhomes.co.uk](mailto:churchmead@norfolkhomes.co.uk)

[www.norfolkhomes.co.uk](http://www.norfolkhomes.co.uk)

#### IMPORTANT:

These sales particulars are intended to give customers a good overview of our homes details. As we update and improve our designs continuously, it may mean that some amendments have been made since the brochure was published.

PLEASE ASK OUR SALES OFFICE MANAGER FOR A COPY OF THE VERY LATEST PLAN(S) OR VISIT OUR WEBSITE [www.norfolkhomes.co.uk](http://www.norfolkhomes.co.uk)



# Norfolk Homes

# The Gentry



Ground Floor



First Floor

Plots 35, 72 and 111

3 bedroom detached house  
and single garage.

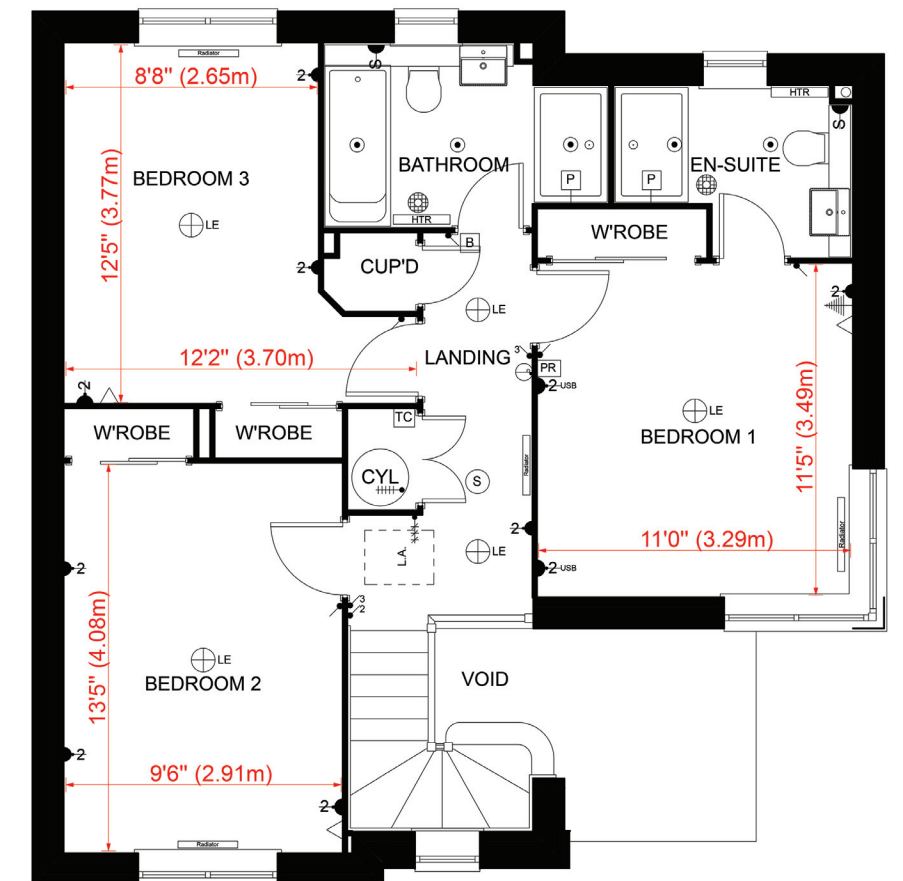
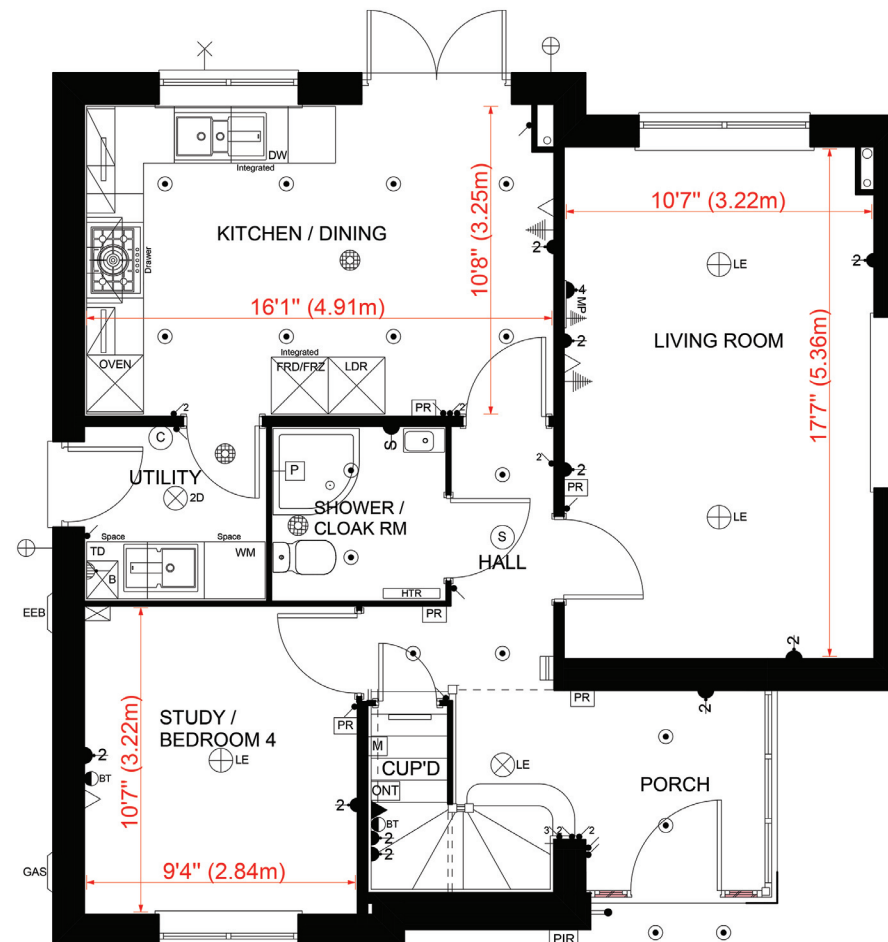
1346 sq.ft (125.0 sq.m.)

Car Parking

**All plots**

2 parking spaces and garage

For precise garage dimensions -  
please ask our Sales Office Manager.



Floor Plans Approximate dimensions (+/- 50 mm).

All computer generated Images shown are not plot specific.

Please arrange a viewing with the Sales Manager to establish individual plot details and finishes, also please refer to details of sale check list provided at point of reservation.