

## Key Features

Built-in energy efficiency with luxurious underfloor heating.

Fibre optic cable to this home to enable super fast broadband.

Integrated kitchen appliances included: Black, glass fronted double oven, gas hob on a glass base and extractor hood.

Glass balustrade to landing with light oak stained wooden handrail and newels.

Beautiful ceramic wall tiling to kitchen, bathroom and en-suite.

Space saving built-in wardrobes with oak effect sliding mirror doors to all bedrooms.

Contemporary wall hung vanity units and chrome heated towel rail in bathroom and en-suite.

Elongated, low level shower tray with a thermostatic pressurised shower and sliding glass door in the en-suite.

For full details of our specification, please refer to our website:

<https://www.norfolkhomes.co.uk/homes-and-locations/church-mead-brundall/specification>



# The Perry

3 bedroom home

CHURCH MEAD  
BRUNDALL



Image shows upgrade induction hob and composite stone worktop.

### Church Mead, Brundall

Berryfields, off Yarmouth Road,  
Brundall, Norfolk NR13 5QE.

Telephone: 01603 964011

Email: [churchmead@norfolkhomes.co.uk](mailto:churchmead@norfolkhomes.co.uk)

[www.norfolkhomes.co.uk](http://www.norfolkhomes.co.uk)

#### IMPORTANT:

These sales particulars are intended to give customers a good overview of our homes details. As we update and improve our designs continuously, it may mean that some amendments have been made since the brochure was published.

PLEASE ASK OUR SALES OFFICE MANAGER FOR A COPY OF THE VERY LATEST PLAN(S) OR VISIT OUR WEBSITE [www.norfolkhomes.co.uk](http://www.norfolkhomes.co.uk)

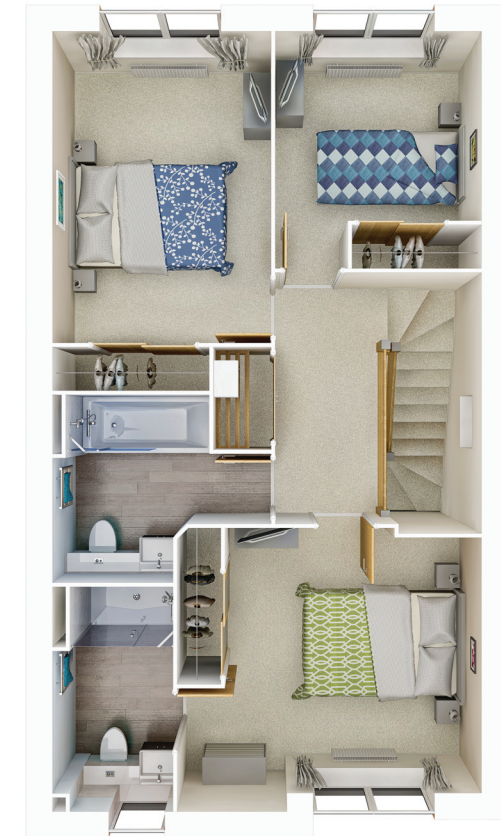


# Norfolk Homes

# The Perry



Ground Floor



First Floor

Plots 79, 83, 85, 88 & 124

3 bedroom semi-detached  
(plots 79, 83 & 124)  
and end terrace (plots 85 & 88).  
1018 sq.ft (94.6 sq.m.)

Car Parking

**Plots 79 & 83**

3 parking spaces & garage

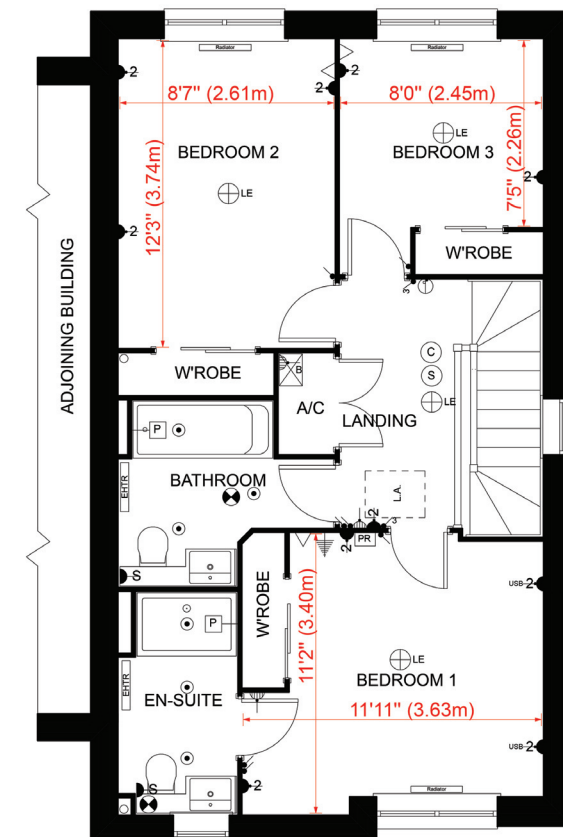
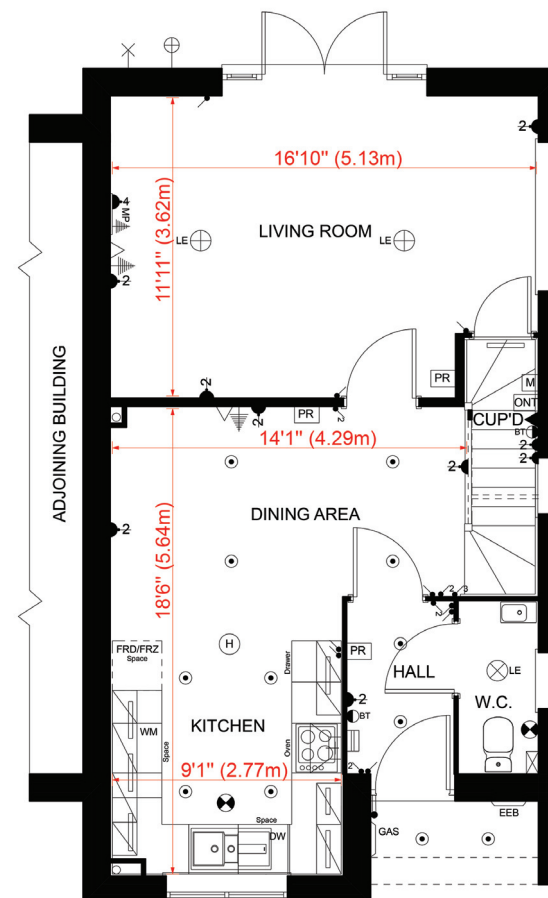
**Plot 124**

2 parking spaces & garage

**Plots 85 & 88**

2 parking spaces

For precise garage dimensions -  
please ask our Sales Office Manager.



Floor Plans Approximate dimensions (+/- 50 mm).