

## Ashdown Court, Horsham

£275,000

🛏 2 🚿 1 🛋 1



An impressive Ground Floor Maisonette with an Extended Lease and Allocated Parking, boasting a Luxurious Bathroom, refitted Kitchen, a triple aspect 20ft Living/Dining Room and Two Double Bedrooms.

Tenure: Leasehold

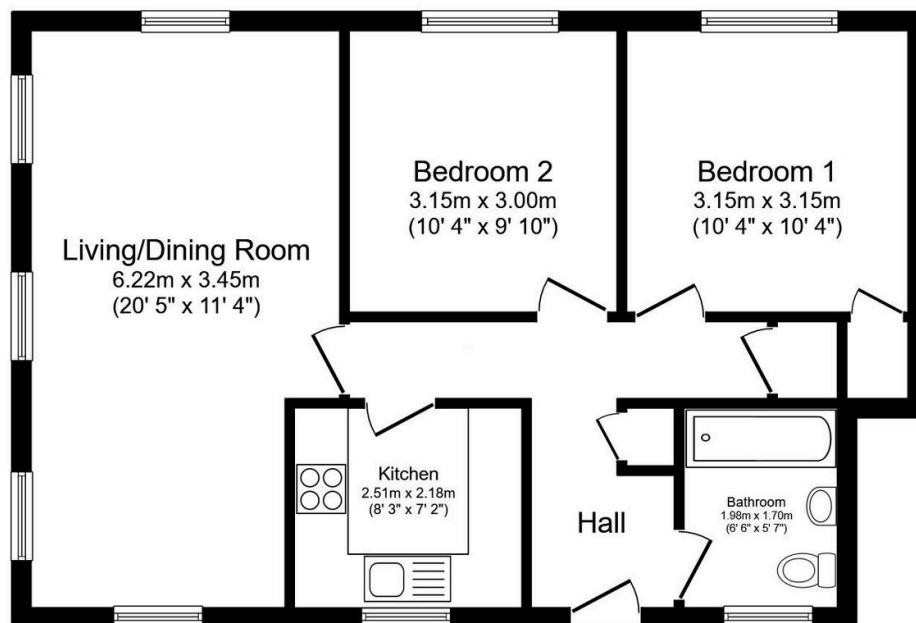
Lease Length: 189 years from 25 March 1994

EPC Rating: Current C - Potential C

Council Tax: Band C

## Key Features

- Watch Our Video Tour
- 20ft Triple Aspect Living Room
- Luxurious Family Bathroom
- Allocated & Visitor Parking
- Beautifully Kept Grounds
- Two Double Bedrooms
- Refitted Kitchen
- Extended Lease
- Ground Floor Apartment
- Close To Local Shops



### Floor Plan

Floor area 61.4 sq.m. (661 sq.ft.)

Total floor area: 61.4 sq.m. (661 sq.ft.)

This floor plan is for illustrative purposes only. It is not drawn to scale. Any measurements, floor areas (including any total floor area), openings and orientations are approximate. No details are guaranteed, they cannot be relied upon for any purpose and do not form any part of any agreement. No liability is taken for any error, omission or misstatement. A party must rely upon its own inspection(s). Powered by [www.Propertybox.io](http://www.Propertybox.io)