

## Pondtail Walk, Kilnwood Vale

Guide Price £280,000

🛏️ 2 🚿 2 🚗 1



An impressive top floor Apartment in Kilnwood Vale, boasting two large double bedrooms, a bright 19'1 x 13'1 open plan Kitchen/Living Area and a luxurious En Suite Shower Room to the Master Bedroom.

Tenure: Leasehold

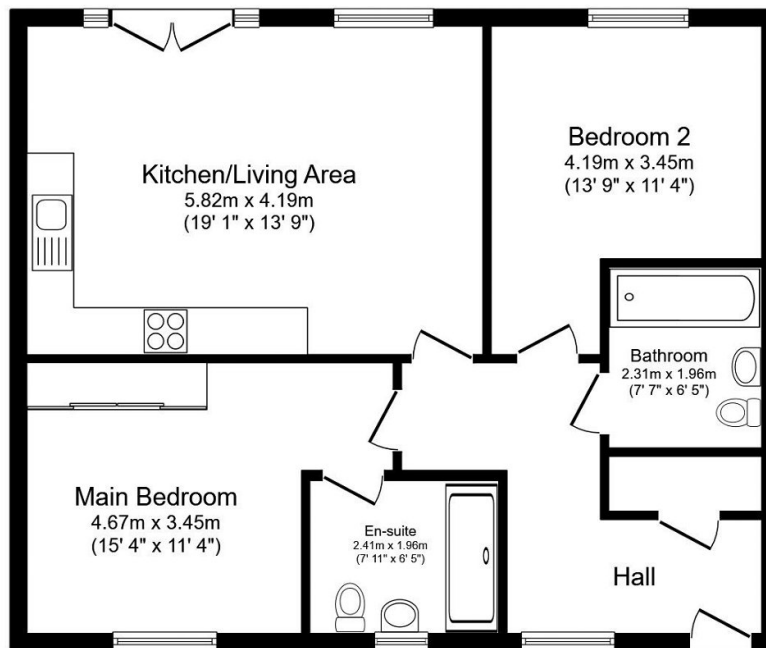
Lease Length: tbc

Council Tax Band: C

EPC Rating: Current B - Potential B

## Key Features

- Modern Top Floor Apartment
- Luxurious Family Bathroom
- Stylish Fitted Kitchen
- Built In 2018
- Ideal First Buy Or Investment
- Two Large Double Bedrooms
- Open Plan 19ft Kitchen/Living Area
- Two Parking Spaces
- Close To New Primary School
- En Suite To Master Bedroom



### Floor Plan

Floor area 72.6 m<sup>2</sup> (781 sq.ft.)

TOTAL: 72.6 m<sup>2</sup> (781 sq.ft.)

This floor plan is for illustrative purposes only. It is not drawn to scale. Any measurements, floor areas (including any total floor area), openings and orientations are approximate. No details are guaranteed, they cannot be relied upon for any purpose and do not form any part of any agreement. No liability is taken for any error, omission or misstatement. A party must rely upon its own inspection(s). Powered by [www.Propertybox.io](http://www.Propertybox.io)