

Sloughbrook Close, Horsham

Offers Over £550,000

3 2 1



A modern Detached Family Home located towards the end of a small cul de sac, boasting a South West facing Garden, refitted 15ft Kitchen Diner and a 16ft Garage.

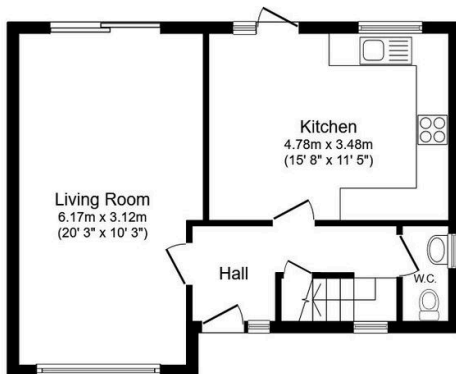
Tenure: Freehold

Council Tax Band: E

EPC: Current C - Potential B

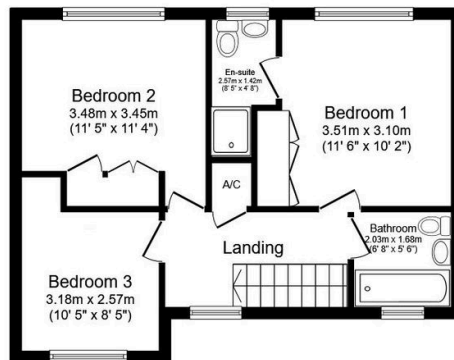
Key Features

- Watch Our Video Tour
- South West Facing Garden
- 15'8 x 11'5 Kitchen Diner
- Three Generous Bedrooms
- Popular School Catchment
- Detached Family Home
- Driveway & 16ft Garage
- 20ft Dual Aspect Living Room
- En Suite To Principal Bedroom
- Close To Littlehaven Station



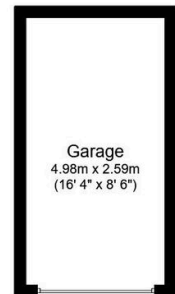
Ground Floor

Floor area 45.4 sq.m. (489 sq.ft.)



First Floor

Floor area 44.9 sq.m. (484 sq.ft.)



Garage

Floor area 12.9 sq.m. (139 sq.ft.)

Total floor area: 103.2 sq.m. (1,111 sq.ft.)

This floor plan is for illustrative purposes only. It is not drawn to scale. Any measurements, floor areas (including any total floor area), openings and orientations are approximate. No details are guaranteed, they cannot be relied upon for any purpose and do not form any part of any agreement. No liability is taken for any error, omission or misstatement. A party must rely upon its own inspection(s). Powered by www.Propertybox.io