




Wood End, Horsham

Offers Over £475,000

 4  1  2



An Extended Four Bedroom Family Home located towards the end of a Small Cul De Sac, boasting a South Facing Garden, plenty of space for the family and No Onward Chain.

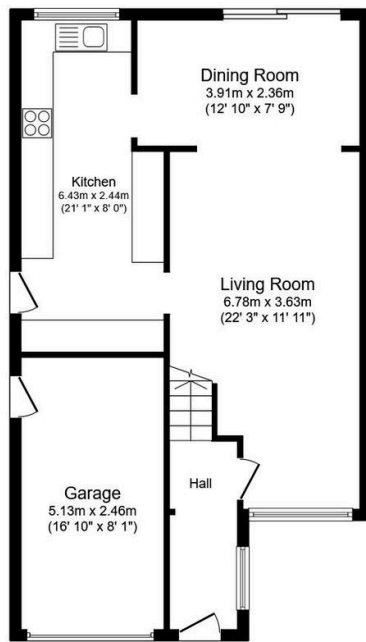
Tenure: Freehold

Council Tax: Band D

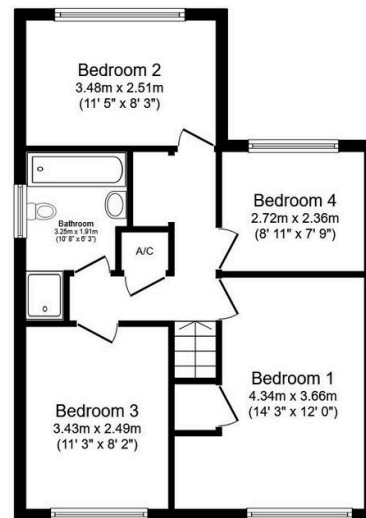
EPC Rating: Current D - Potential C

Key Features

- Watch Our Video Tour
- Four Generous Bedrooms
- No Onward Chain
- Spacious 22ft Living Room
- Generous 21ft Kitchen
- Extended Family Home
- South Facing Garden
- Quiet Cul De Sac Location
- Separate Dining Room
- Large Family Bathroom



Ground Floor
Floor area 67.4 sq.m. (725 sq.ft.)



First Floor
Floor area 51.4 sq.m. (553 sq.ft.)

Total floor area: 118.8 sq.m. (1,278 sq.ft.)

This floor plan is for illustrative purposes only. It is not drawn to scale. Any measurements, floor areas (including any total floor area), openings and orientations are approximate. No details are guaranteed, they cannot be relied upon for any purpose and do not form any part of any agreement. No liability is taken for any error, omission or misstatement. A party must rely upon its own inspection(s). Powered by www.Propertybox.io