

Oaklands, Horsham

Guide Price £260,000

2 1 1



A spacious Ground Floor Maisonette, just 0.3 miles from Horsham Station, boasting Two Large Double Bedrooms, a Lease in excess of 950 years and No Onward Chain.

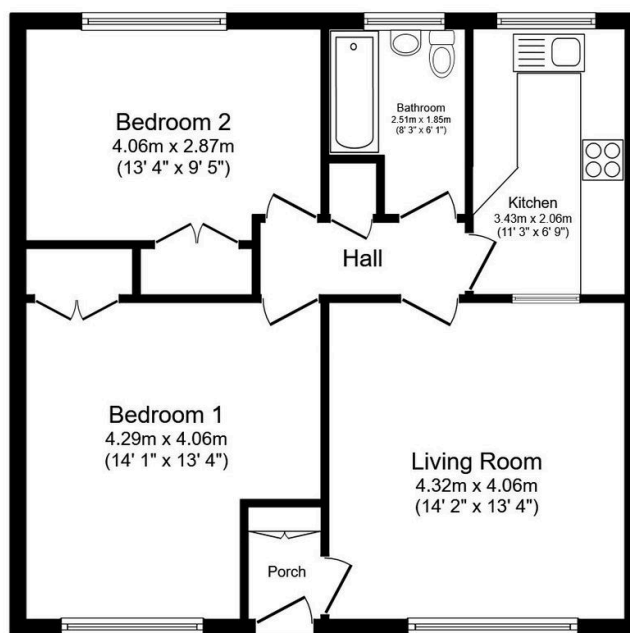
Tenure: Leasehold

Council Tax Band: B

EPC: Current - C Potential - C

Key Features

- Watch Our Video Tour
- Two Large Double Bedrooms
- Lease Over 950 Years
- 0.3 Miles From Horsham Station
- Attractive 11ft Kitchen
- Ground Floor Maisonette
- No Onward Chain
- Excellent Storage
- Bright 14'2 x 13'4 Living Room
- Family Bathroom With Window



Floor Plan

Floor area 64.8 sq.m. (698 sq.ft.)

Total floor area: 64.8 sq.m. (698 sq.ft.)

This floor plan is for illustrative purposes only. It is not drawn to scale. Any measurements, floor areas (including any total floor area), openings and orientations are approximate. No details are guaranteed, they cannot be relied upon for any purpose and do not form any part of any agreement. No liability is taken for any error, omission or misstatement. A party must rely upon its own inspection(s). Powered by www.Propertybox.io