




Bennetts Road, Horsham

Offers Over £450,000

 3  2  2



A beautifully presented and Extended Family Home, close to Popular Schools, boasting a Large South Facing Garden and Extended 14ft x 14ft Double Aspect Kitchen.

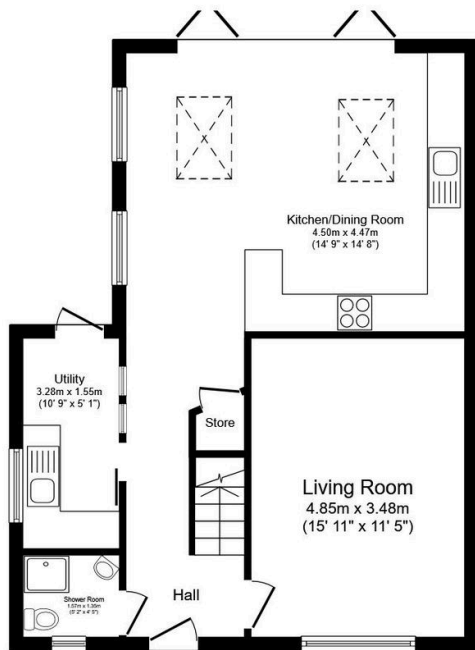
Tenure: Freehold

Council Tax: Band C

EPC Rating: Current C - Potential C

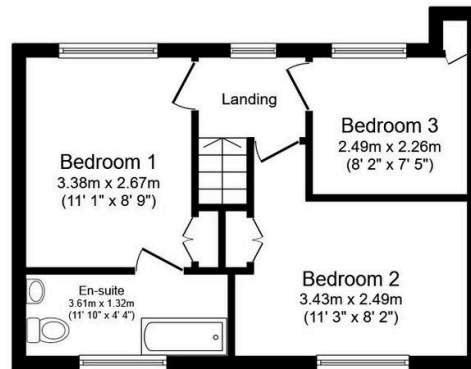
Key Features

- Watch Our Video Tour
- Stunning 14'9 x 11'7 Kitchen Dining Room
- Bathroom & Shower Room
- Three Bedrooms
- Close To Town & Station
- Extended Family Home
- Large South Facing Garden
- 15'11 x 11'5 Living Room
- Popular School Catchment
- Beautifully Presented Throughout



Ground Floor

Floor area 58.7 sq.m. (632 sq.ft.)



First Floor

Floor area 34.2 sq.m. (368 sq.ft.)

Total floor area: 93.0 sq.m. (1,001 sq.ft.)

This floor plan is for illustrative purposes only. It is not drawn to scale. Any measurements, floor areas (including any total floor area), openings and orientations are approximate. No details are guaranteed, they cannot be relied upon for any purpose and do not form any part of any agreement. No liability is taken for any error, omission or misstatement. A party must rely upon its own inspection(s). Powered by www.Propertybox.io